

DEMA MODEL 607-3, 607-3DF & 607-3SS

HI-FLOW FILL STATION INSTALLATION INSTRUCTIONS

I. PARTS:

PARTS CHECKLIST					
ITEM	PART NUMBER	DESCRIPTION	607-3	607-3DF	607-3SS
A.	607-3, 607-3DF or 607-3SS	Fill Station Assembly	1	1	1
B.	60-47	Outlet Tubing 10' long	1	1	1
C.	76-2-13	Hose Clamp	1	1	1
D.	100-16E-4	Tubing & Foot Valve Assembly	1	2	1
E.	61-107	Ceramic Weight	1	2	1
F.	66-54	#10 Screw & Anchor Kit	1	1	1
G.	61-9K	Metering Tip Kit	1	1	1
H.	60-52	Wire Hose Hanger	1	1	1

II. PURPOSE:

The only difference between the 607-3 and the 607-3DF is that the **607-3** is a **single product unit** whereas the **607-3DF** is a **two product unit** (the DF stands for DUAL FEED).

III. INSTALLATION:

CAUTION: ALL WORK DONE SHOULD ADHERE TO ALL APPLICABLE PLUMBING CODES.

1. Hold assembly to wall, locate positions of mounting screws. Drill holes in wall about 1" deep. Mount assembly to wall using screws and anchors provided.
2. Install priming ring in outlet tubing (large diameter), a few inches from one end. Slip tubing over threads of injector, with priming ring close to the injector. Secure with tubing clamp and cut to convenient length.
3. Attach water supply hose (not provided) to water inlet and tighten.
4. To install wire hose hanger, slip outlet tubing through hose hanger.

IV. CHEMICAL ADJUSTMENT:

CAUTION: Be careful when working with hazardous chemicals.

1. Select metering tip using Table 1 as a guide. Screw tip into inlet barb of injector.
2. Cut inlet tube to convenient length, at least 18" long to insure priming but not more than 6' (greater lifts reduce injection capacity).
3. Slip ceramic weight over tubing and insert end with foot strainer into chemical. Attach other end to inlet barb of injector.

**Table 1: Induction readings taken at 50-psi
inlet pressure & 9 GPM.**

METERING TIPS	1 CPS	
	OZ/GAL	RATIO
Clear	0.21	606.3 – 1
Purple	0.26	496.9 – 1
Yellow	0.44	288.6 – 1
Green	0.83	155.0 – 1
Pink	0.95	134.1 – 1
Turquoise	1.57	81.6 – 1
Black	2.01	63.6 – 1
Gray	2.64	48.4 – 1
Red	3.40	37.7 – 1
Blue	4.11	31.1 – 1
Brown	5.64	22.7 – 1
White	7.19	17.8 – 1
Orange	8.71	14.7 – 1
None	14.88	8.6 – 1

**NOTE: IN ORDER FOR UNIT
TO OPERATE PROPERLY,
FLOW RATE NEEDS TO BE 10
GPM OR GREATER.**

Induction rates may vary from product to product,

DEMA MODEL 607-3, 607-3DF & 607-3SS

HI-FLOW FILL STATION

INSTALLATION INSTRUCTIONS

field test are recommended.

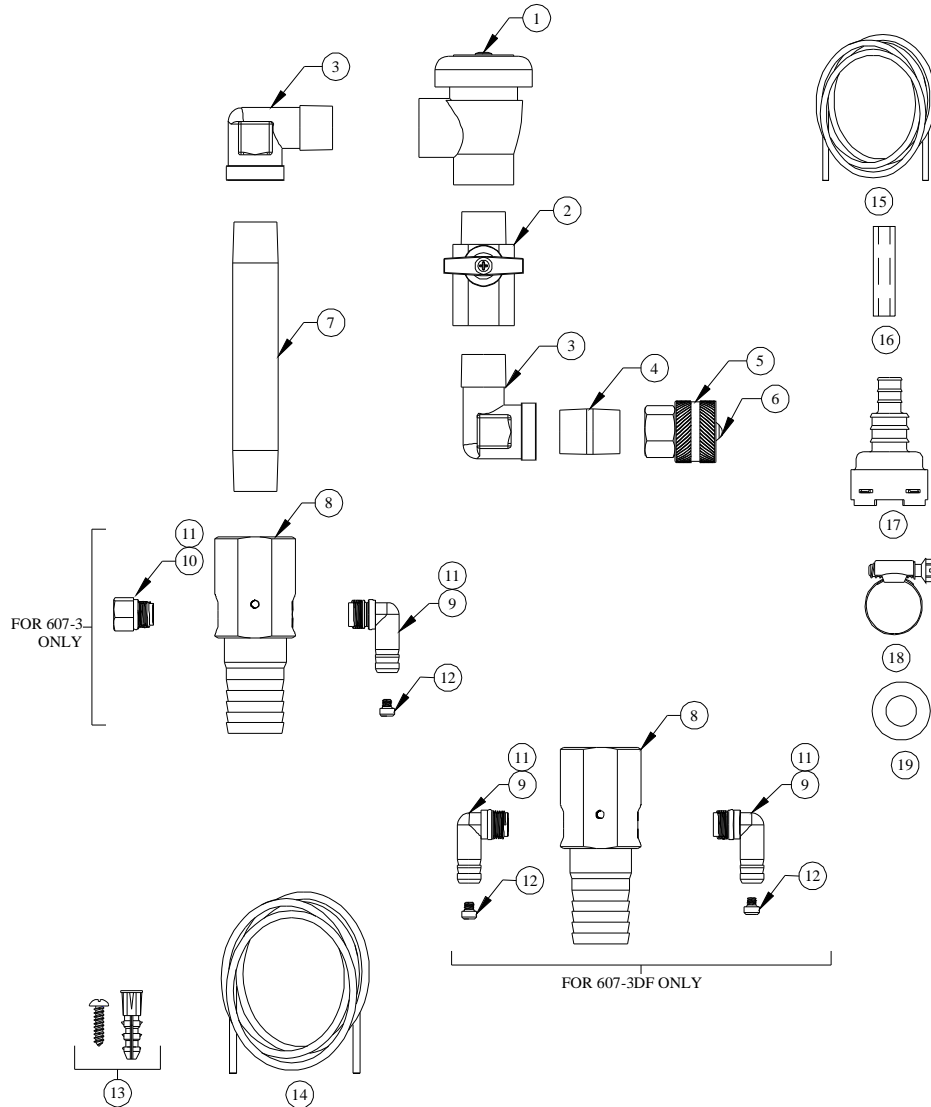
RETURNS: **NO MERCHANDISE MAY BE RETURNED FOR CREDIT WITHOUT DEMA'S WRITTEN PERMISSION. RETURN MERCHANDISE AUTHORIZATION NUMBER REQUIRED IN ADVANCE OF RETURN.**

WARRANTY: DEMA products are warranted against defective material and workmanship under normal use and service for one year from the date of manufacture. This limited warranty does not apply to any products which have a normal life shorter than one year or failure and damage caused by chemicals, corrosion, improper voltage supply, physical abuse, or misapplication. Rubber and synthetic rubber parts such as "o"- rings, diaphragms, squeeze tubing and gaskets are considered expendable and are not covered under warranty. This warranty is extended only to the original buyer of DEMA products. If products are altered or repaired without prior approval of DEMA, this warranty will be void.

Defective units or parts should be returned to the factory with transportation prepaid. If inspection shows them to be defective, they will be repaired or replaced without charge, F.O.B. factory. DEMA assumes no liability for damages. Return merchandise authorization number, to return units for repair or replacement, must be granted in advance of return.

DEMA MODEL 607-3, 607-3DF & 607-3SS

HI-FLOW FILL STATION INSTALLATION INSTRUCTIONS



NO.	PART NO.	DESCRIPTION
1	60-9	Siphon Breaker (1/2" NPT)
2	95-4-1	Ball Valve (1/2" NPT MXF)
3	90-7	Street Elbow (Plated) 1/2" NPT
4	90-73-1	Pipe Nipple (Plated) 1/2" NPT X 1-1/8" Lg.
5	93-104-2	Hose Swivel Coupling (Plated) 3/4" FGHT X 1/2" FPT
6	100-38	Strainer Washer
7	90-73-9	Pipe Nipple (Plated) 1/2" NPT X 5" Lg.
8	61-8-1	Proportioner Body
9	63-80	Inlet Barb, 3/8" (with O-Ring)
10	65-5-1	Plug

NO.	PART NO.	DESCRIPTION
11	63-78	O-Ring, EPDM (O-Ring only)
12	61-9-	Metering Tip (Specify Color)
13	66-54	Mounting Screw & Anchor Kit (4 EA)
14	60-47	Outlet Tubing (1" ID X 10 Ft. Long)
15	100-12L	Vinyl Tubing (3/8" ID X 8' Long)
16	61-107	Ceramic Weight (for 3/8" ID 1/2" OD tubing)
17	100-16E	Foot Valve
18	76-2-13	Outlet Tubing Worm Clamp
19	60-49	Priming Ring