

PLASTIC MANIFOLD VALVE

MODEL: P404J

INSTALLATION INSTRUCTIONS

1. INSTALLATION:

Wiring must comply with city, county, state or provincial Electrical Codes and should be performed by a certified electrician. For questions, please contact a local licensed electrical contractor.

The P404J valve has two ½” NPT water “throughput” connections opposite each other, one male and one female. The male of one P404J can be attached to the female of another so that several ganged units can share the same water supply yet each have it’s own solenoid controlled output. The outlet, which is perpendicular to the “throughput”, has a ¾” male GHT as well as an internal ¼” female NPT. The P404J may be mounted in any position except with the solenoid coil underneath. The female input has an o-ring gasket so no joint compound will be required. Avoid over-tightening pipe to valve body. Support and align pipe to eliminate pipe strain on the valve body.

WARNING: Do not use Teflon® tape to seal internal plastic threads as the extra thickness of the tape may cause the plastic to crack. Use a non-welding liquid sealant instead.

2. FLUIDS:

Valves are intended for water, air, light oil, and other noncorrosive fluids. They should *not* be used for gasoline and other hazardous or explosive fluids. Maximum fluid temperature is 140° F (93.3°C). Ambient temperature shall not exceed 120°F (48.8°C).

WARNING: NOT FOR USE WITH HAZARDOUS OR CORROSIVE OR EXPLOSIVE FLUIDS.

3. OPERATION:

When the solenoid coil is energized the plunger is pulled up, thus opening the small "pilot port" in the center of the diaphragm plate. This releases the pressure on top of the diaphragm allowing incoming pressure to lift it off the larger center port. When the coil is de-energized the solenoid plunger is pushed down by the kick-off spring and closes the pilot port. Fluid passes through the small diaphragm bleed holes until pressure is equalized on both sides of the diaphragm to shut off the larger port.

4. SPECIFICATIONS:

Maximum operating pressure differential: 125 PSI

Safe working pressure: 150 PSI

Flow factor (C_v): 1.0

Maximum temperature: 180°F fluid temp.; 120° ambient temp.

Power: 10 Watts

Volt-Amp rating: Inrush - 16.0 VA

Holding - 11.5 VA

5. TROUBLE SHOOTING:

A) Failure to open or close:

1. Coil burnout (over-voltage) or an open circuit to coil connections.
2. No power or low voltage.
3. Dirt, scale or sludge may prevent the plunger and diaphragm from operating.
4. High differential pressure that exceeds the MOPD rating of valve (125 PSI Max.).
5. Low differential pressure (3 PSI Min.).

B) Water Hammer:

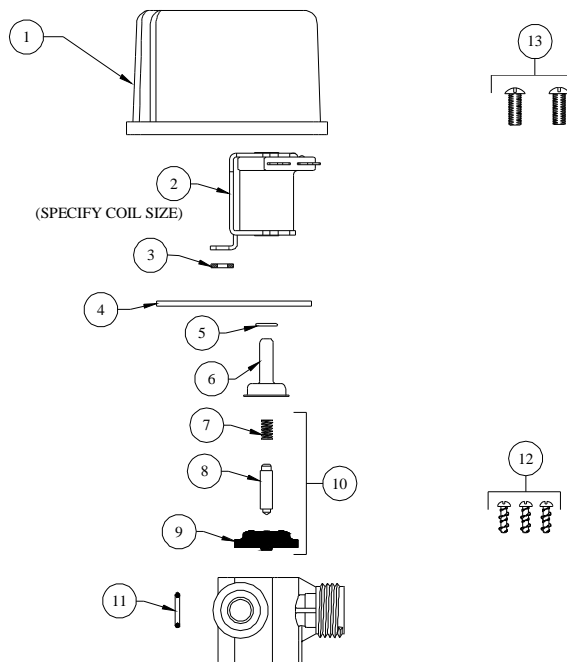
Quick acting valves may cause water hammer when operated. If this occurs, it may be minimized by the use of a standpipe or other commercially available shock absorber installed near the valve inlet.

CAUTION: WHEN SERVICING UNIT BE SURE THAT REPLACEMENT PARTS HAVE BEEN INSTALLED ACCORDING TO DRAWING.

PLASTIC MANIFOLD VALVE

MODEL: P404J

INSTALLATION INSTRUCTIONS



NO.	PART NO.	DESCRIPTION
1	41-73	Valve Cover
2	41-9-5	Coil & Bracket (Specify Size)
3	41-41	Nylon Washer
4	41-72-2	Cover Mounting Plate
5	41-34	Spacer Ring
6	41-7-25	Enclosing Tube
7	41-1-8	Closing Spring
8	41-10-11	Plunger
9	41-15-10	Diaphragm
10	61-78	Valve Repair Kit
11	41-79	O-Ring (For Female Input)
12	63-46	Hi-Lo Screw (3 Req'd)
13	41-63-2	Valve Cover Screw (2 Req'd)

RETURNS: NO MERCHANDISE MAY BE RETURNED FOR CREDIT WITHOUT DEMA'S WRITTEN PERMISSION. RETURN MERCHANDISE AUTHORIZATION NUMBER REQUIRED IN ADVANCE OF RETURN.

WARRANTY: DEMA products are warranted against defective material and workmanship under normal use and service for one year from the date of manufacture. This limited warranty does not apply to any products which have a normal life shorter than one year or failure and damage caused by chemicals, corrosion, improper voltage supply, physical abuse, or misapplication. Rubber and synthetic rubber parts such as "o"- rings, diaphragms, squeeze tubing and gaskets are considered expendable and are not covered under warranty. This warranty is extended only to the original buyer of DEMA products. If products are altered or repaired without prior approval of DEMA, this warranty will be void.

Defective units or parts should be returned to the factory with transportation prepaid. If inspection shows them to be defective, they will be repaired or replaced without charge, F.O.B. factory. DEMA assumes no liability for damages. Return merchandise authorization number, to return units for repair or replacement, must be granted in advance of return.