

DEMA 153

FAUCET PROPORTIONER

INSTALLATION INSTRUCTIONS

I. PARTS:

- A. Proportioner
- B. Vinyl tubing, foot valve & ceramic weight
- C. Metering tips (2 ea.)

II. INSTALLATION:

This product is designed only to be used as described in this instruction sheet. Adhere to all warnings and cautions identified in this document.



WARNING: Installations must conform to all local and national plumbing codes and use approved backflow prevention and pressure relief devices where required.

ALWAYS DISCONNECT DISPENSER FROM WATER SOURCE WHEN DISPENSER IS NOT IN USE.



Always read SDS for all chemicals used and follow personal protective guidelines.

Screw proportioner directly onto garden hose type faucets. Remove inlet adapter for mounting onto standard external aerator threads. For other faucets see reverse side for adapter part numbers. Select a metering tip (See section IV) and screw it into inlet barb (See figure 1). Cut vinyl tubing to any convenient length, slip on the ceramic weight, and push the open end over the inlet barb. Soften end of tubing in hot water to facilitate attachment.

III. OPERATION:

Turn on water and press blue button to draw in chemical. When the water is turned off, the proportioner will reset to dispense clear water.

IV. CHEMICAL PROPORTIONING ADJUSTMENT:

WARNING: USE CARE WHEN HANDLING HAZARDOUS CHEMICAL.

DEMA 153

FAUCET PROPORTIONER

INSTALLATION INSTRUCTIONS

Chemical feed rates are controlled by metering tips screwed into the inlet barb. Injection rates for various settings and for products of different viscosities are as follows:

1 cps (centipoise) is equal to the viscosity of water
75 cps is approximately equal to the viscosity of 10 weight motor oil
200 cps is approximately equal to the viscosity of most dishwashing detergents

TABLE 1

Metering Tip Color	Injection Rates For Viscosities Shown							
	1 cps		30 cps		75 cps		200 cps	
	Oz/Ga l	Ratio	Oz/Ga l	Ratio	Oz/Ga l	Ratio	Oz/Ga l	Ratio
Tan	0.25	512-1	0.20	640-1	0.17	753-1	0.15	853-1
Orange	0.33	384-1	0.30	427-1	0.25	512-1	0.20	640-1
Turquoise	0.50	256-1	0.40	320-1	0.33	384-1	0.25	512-1
Pink	0.63	203-1	0.50	256-1	0.45	284-1	0.33	384-1
Clear	0.75	171-1	0.70	183-1	0.60	213-1	0.45	284-1
Brown	1.00	128-1	0.85	151-1	0.70	183-1	0.50	256-1
Red	1.25	116-1	1.00	128-1	0.80	160-1	0.60	213-1
White	1.50	85-1	1.25	102-1	1.00	128-1	0.70	183-1
Green	1.75	73-1	1.50	85-1	1.15	111-1	0.75	171-1
Blue	2.00	64-1	1.25	73-1	1.35	95-1	0.85	150-1
Yellow	3.20	40-1	2.50	51-1	1.85	69-1	0.90	142-1
Black	4.00	32-1	3.20	40-1	2.20	58-1	0.95	135-1
Purple	6.40	20-1	5.00	25-1	2.50	51-1	1.00	128-1
Gray	10.00	12-1	5.50	23-1	2.75	47-1	1.05	122-1
No Tip	12.00	10-1	6.40	20-1	3.20	40-1	1.10	116-1

Note: The maximum injection rates of viscous materials can be increased by using oversized tubing Dema part number 100-

12L.

DEMA 153

FAUCET PROPORTIONER

INSTALLATION INSTRUCTIONS

V. SERVICING:

CAUTION: Turn off water supply before servicing.

A. Failure to inject chemical?

1. Low water pressure. At least 15 psi is required.
2. Dirt or chemical on outlet screens. Clean.
3. Blue button does not seal when pushed. Remove and inspect for dirt or damage.
4. Chemical passage blocked. Remove metering tip, then remove proportioner and soak in hot water to clean internal passages.
5. Foot valve clogged. Soak in hot water.
6. Lime deposits in water passages. Remove proportioner and soak in deliming solution.
7. Conical inlet screen 150-34 is dirty or missing. Clean or replace.

B. Injects continuously?

1. Button fails to reset because of damage to button, retainer or spring.
2. Vacuum breaking air vents in button retainer are clogged with grease or dirt. Clean.
3. Chemical container above level of faucet. Place container on floor.

CAUTION: When servicing unit be sure that replacement parts have been installed according to drawing.

RETURNS:

NO MERCHANDISE MAY BE RETURNED FOR CREDIT WITHOUT DEMA'S WRITTEN PERMISSION. RETURN MERCHANDISE AUTHORIZATION NUMBER REQUIRED IN ADVANCE OF RETURN.

WARRANTY:

DEMA products are warranted against defective material and workmanship under normal use and service for one year from the date of manufacture. This limited warranty does not apply to any products which have a normal life shorter than one year or failure and damage caused by chemicals, corrosion, improper voltage supply, physical abuse, or misapplication. Rubber and synthetic rubber parts such as "o"-rings, diaphragms, squeeze tubing and gaskets are considered expendable and are not covered under warranty. This warranty is extended only to the original buyer of DEMA products. If products are altered or repaired without prior approval of DEMA, this warranty will be void.

Defective units or parts should be returned to the factory with transportation prepaid. If inspection shows them to be defective, they will be repaired or replaced without charge, F.O.B. factory. DEMA assumes no liability for damages. Return merchandise authorization number, to return units for repair or replacement, must be granted in advance of return.

DEMA 153 FAUCET PROPORTIONER INSTALLATION INSTRUCTIONS

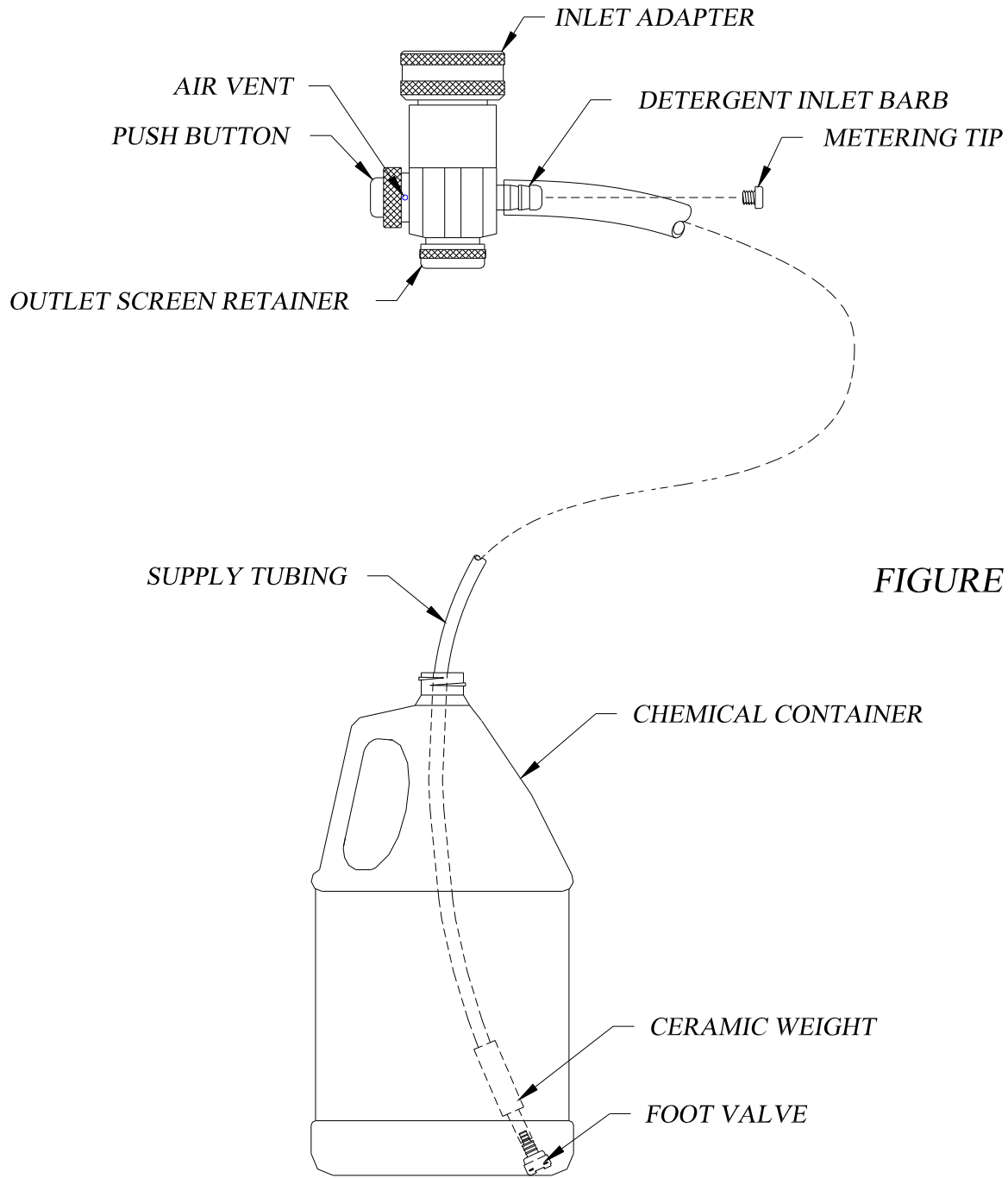
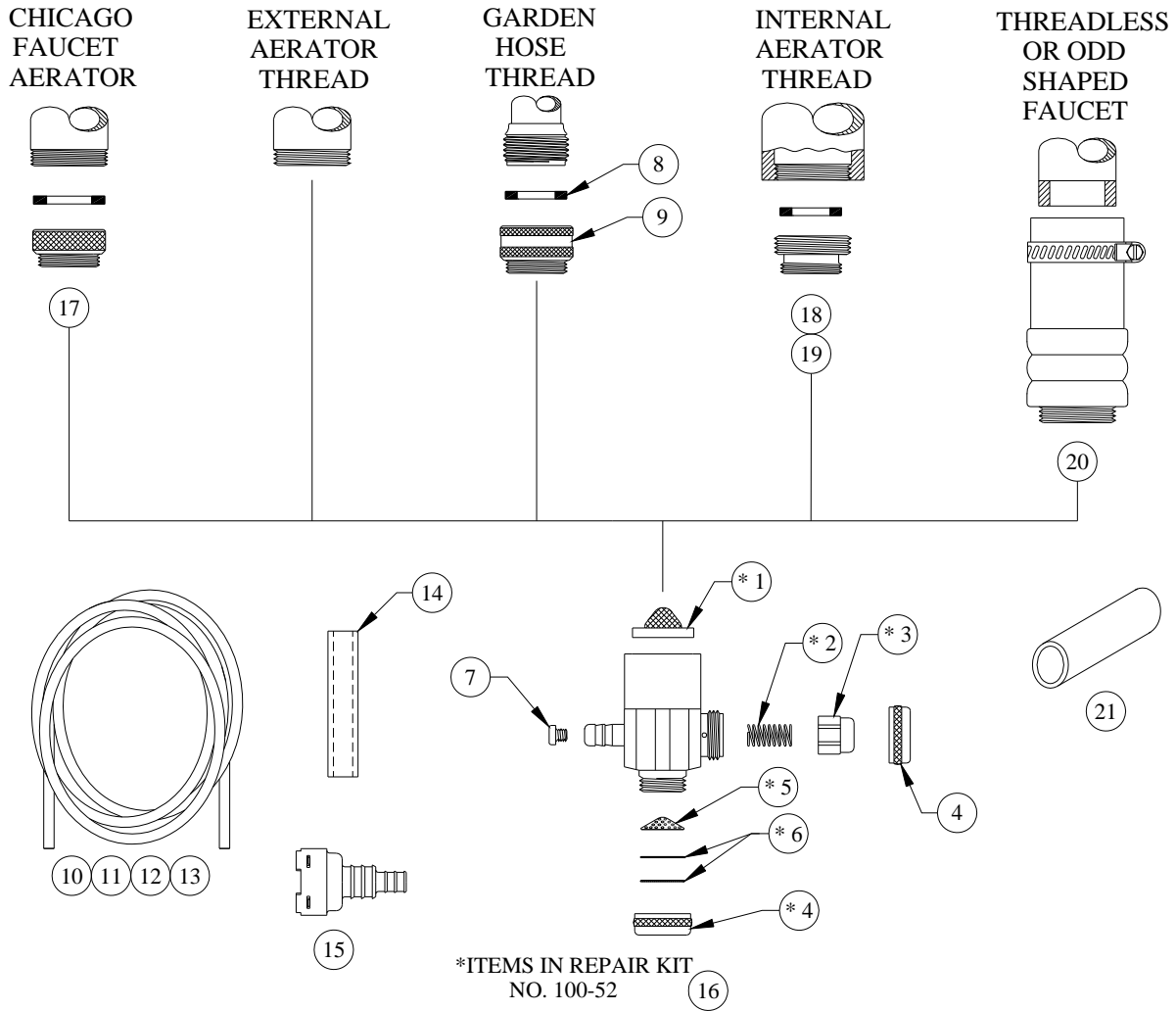


FIGURE 1

DEMA 153

FAUCET PROPORTIONER

INSTALLATION INSTRUCTIONS



NO.	PART NO.	DESCRIPTION
1 *	150-34	Inlet Screen Washer
2 *	100-29	Button Spring
3 *	100-26	Push Button
4	100-36	Button Retainer
5 *	100-33	Outlet Screen (Conical)
6 *	100-19	Outlet Screen (Flat) (2 Req'd)
7 *	100-15	Metering Tip (Specify Color)
8 *	150-6	Adapter Washer
9	150-10	Hose Thread Adapter w/Washer
10	100-12	7/32" ID x 3/8"OD x 8' Lg. Supply Tubing
11	100-12E	7/32" ID x 3/8"OD x 50' Lg. Supply Tubing
12	100-12L	3/8" ID x 1/2"OD x 8' Lg. Supply Tubing

NO.	PART NO.	DESCRIPTION
13	100-12LE	3/8" ID x 1/2"OD x 50' Lg. Supply Tubing
14	61-107-2	Ceramic Weight
15	100-16E	Foot Valve
16	100-52	Repair Kit

NO.	PART NO.	DESCRIPTION
17	150-23	Outside Chicago Thread Adapter
18	150-21	Inside Aerator Thread Adapter
19	150-32	Inside Kohler Thread Adapter
20	150-9-2	Irregular Faucet Adapter
21	100-14M	Coupling For 1/4" ID x 8' Lg. Tubing