



Data Grip Training

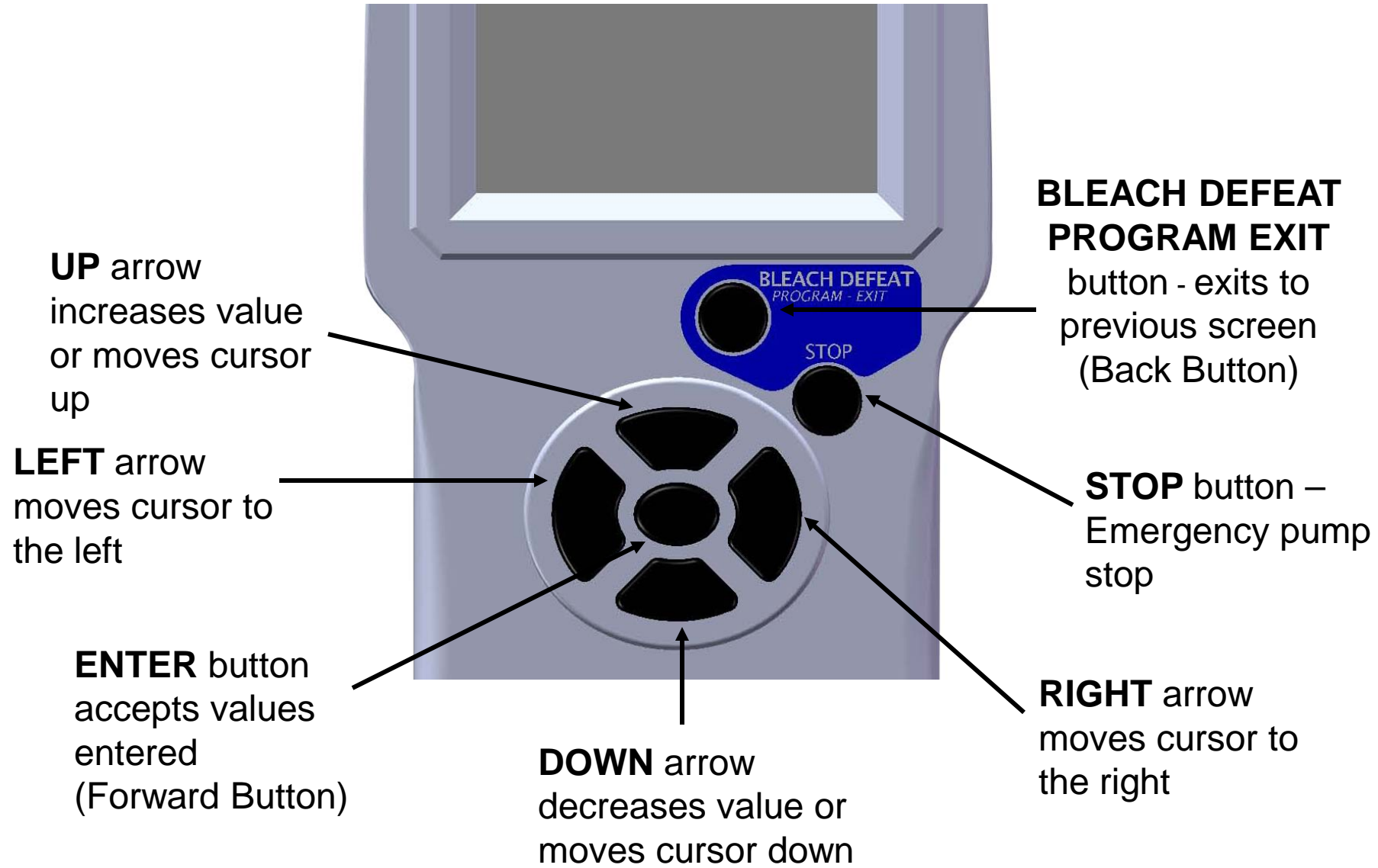
Data Grip

A data management and reporting tool that works in conjunction with the Dema Atlas laundry dispenser to monitor when and how product is used

- Stand alone, can be used with existing Atlas placements
- Calculates product usage, product cost, formula cost and invoices
- Three different programmable time period reports: User defined, monthly and billing cycle
- Customizable report & formula names and downloadable reports to a USB memory device



Data Grip Primary Button Functions



User Screen

- Allows the Data Grip to be used as a formula selector
- Has load count display
- Shows formula names and product being dispensed
- Press enter to advance to next screen for programming



Language Screen

- Allows user to select from 4 different languages
 - English
 - Spanish
 - Portuguese
 - French
- Press enter to advance to the next screen



Password Screen

- Use the LEFT & RIGHT arrows to select the digit to be modified
- Press UP & Down arrows to increase or decrease digit value
- Press ENTER when desired code is displayed



Folder Screen

- Each folder allows up to 30 formulas and data management setup
- Use the UP & DOWN arrows to move the cursor up and down between folders 1-8
- Press ENTER at desired folder



Main Screen

- To Select category Use UP and DOWN arrows to move cursor to the category you wish to modify
- Press ENTER to continue



Set Up

- Sets basic dispenser operation parameters
 - Clear Load Counts
 - Pump Volume
 - Formula Lockout
 - Set Sequence (Drain)
 - Set Units
 - Test Formula



Set Up – Clear Load Counts

- Used to clear load counts from all formulas on dispenser
- Use the UP & DOWN arrows to move cursor to YES
- Press ENTER to clear load counts
- Press exit to go back to the previous screen



Set Up – Pump Volume

- Used to select formula to be programmed
- Use UP and DOWN arrows to scroll through formulas
- Press ENTER when desired formula is displayed



Set Up – Pump Volume

- Used to program pump operation, delay settings and flush
- Can set 2 different operations for each pump (L1 and L2)
- Move the UP, DOWN, LEFT and RIGHT arrows to move the cursor to desired pump, operation or delay
- Press ENTER to change desired setting
- Note: P7 is post flush time when flush mode is enabled



Set Up – Formula Lockout

- Used to program lockout time for each formula
- Use UP & DOWN arrows to scroll through formulas
- Press ENTER when desired formula is displayed



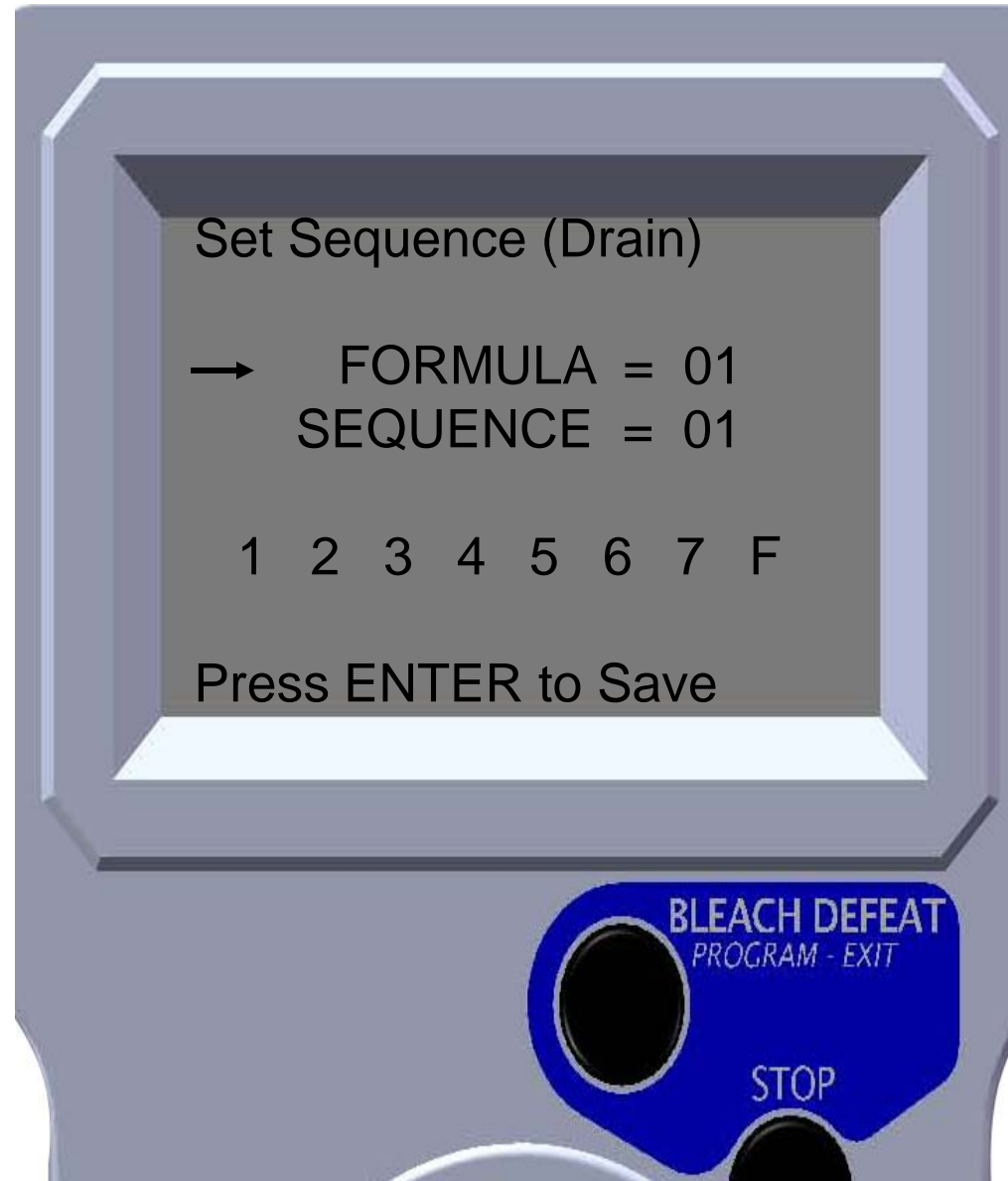
Set Up – Formula Lockout

- Used to set lockout time in minutes
- **USE LEFT & RIGHT** arrows to move cursor to each digit
- Use **UP & DOWN** arrows to change value of each digit
- Press **ENTER** when desired value is displayed



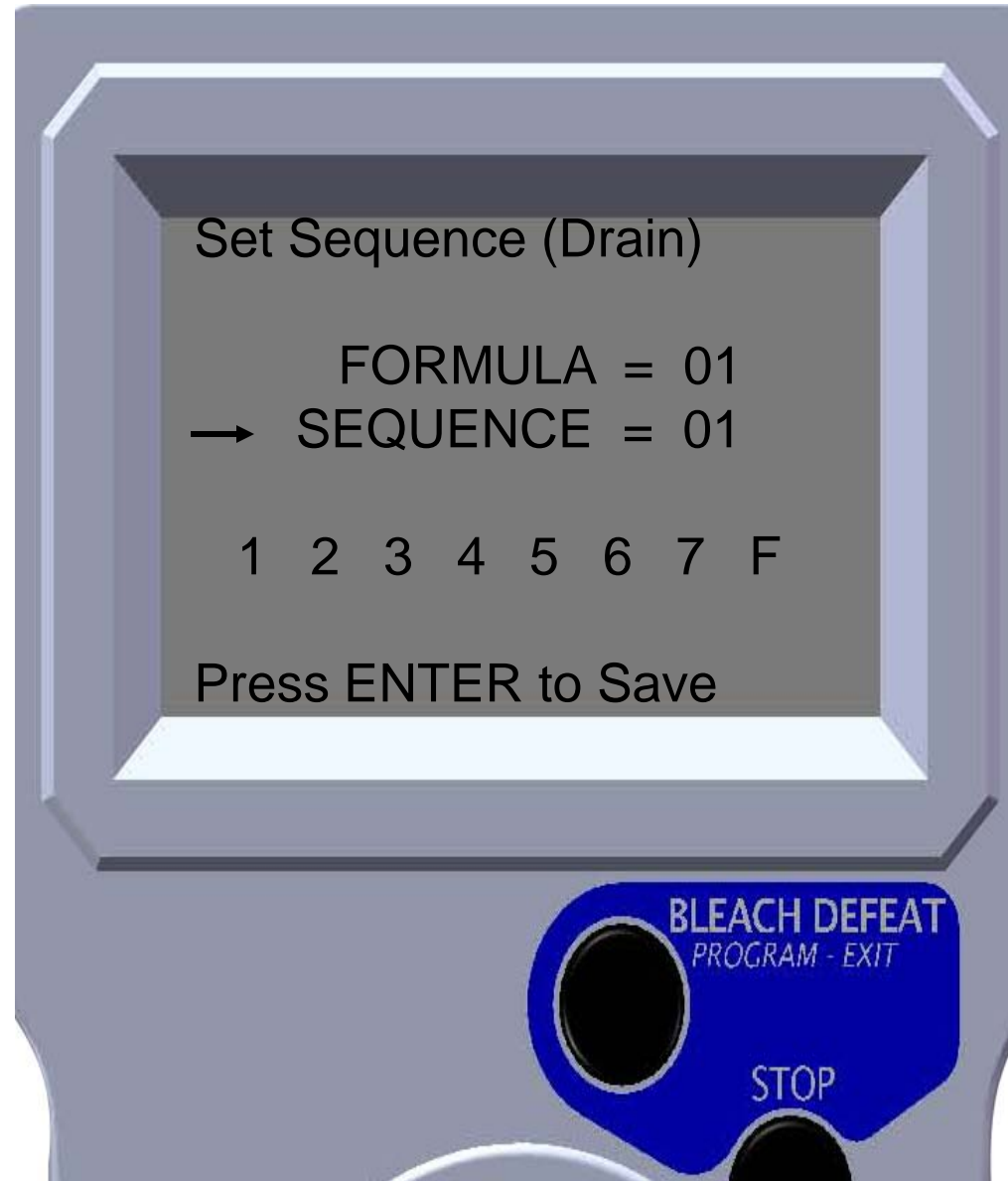
Set Up – Set Sequence

- Use UP & DOWN arrows to select desired formula
- Press enter when desired formula number is displayed



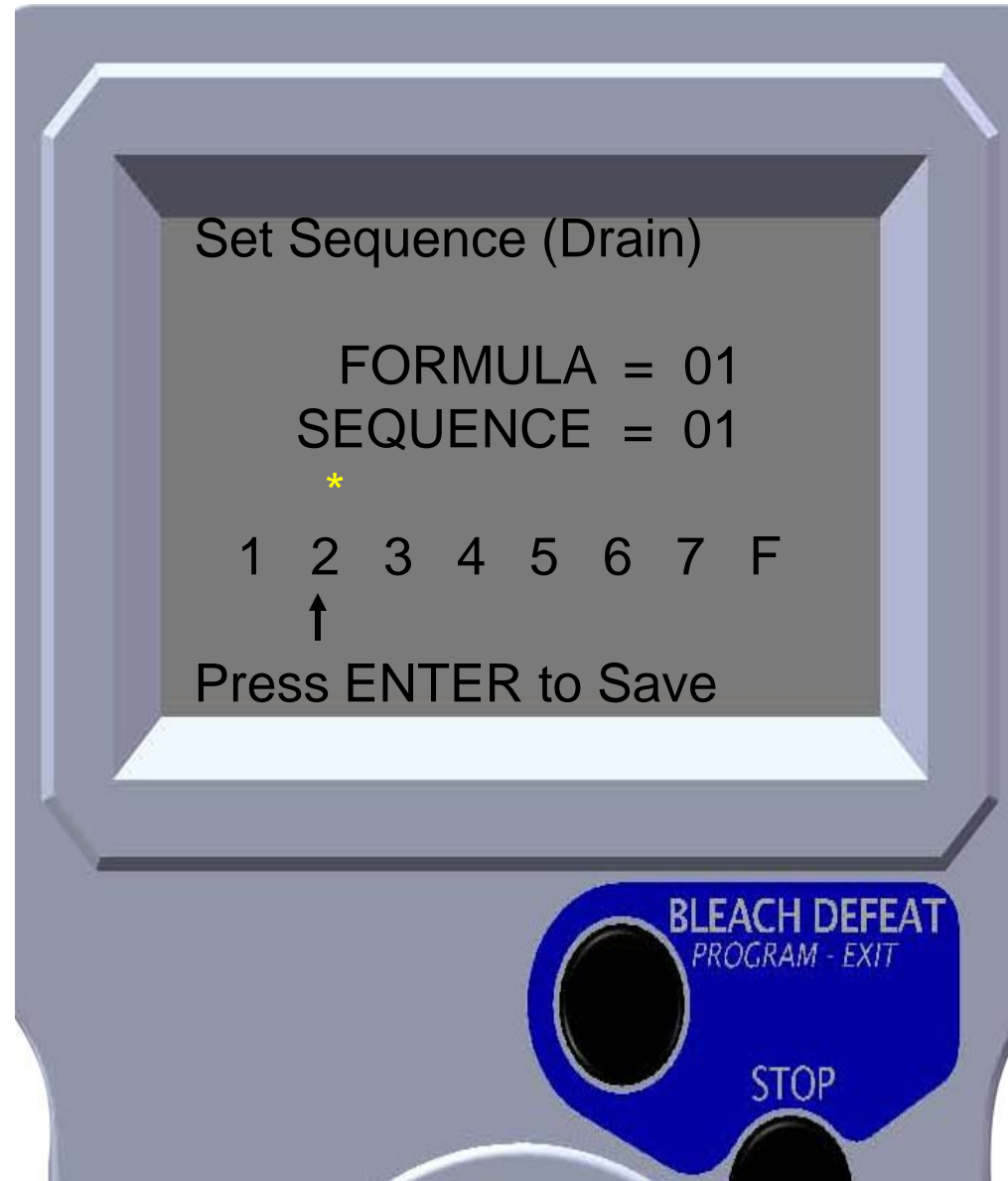
Set Up – Set Sequence

- The sequence number is the amount of drain or fill operations on the laundry machine
- Use the UP & DOWN arrow to select desired sequence number
- Press ENTER when desired sequence number is displayed



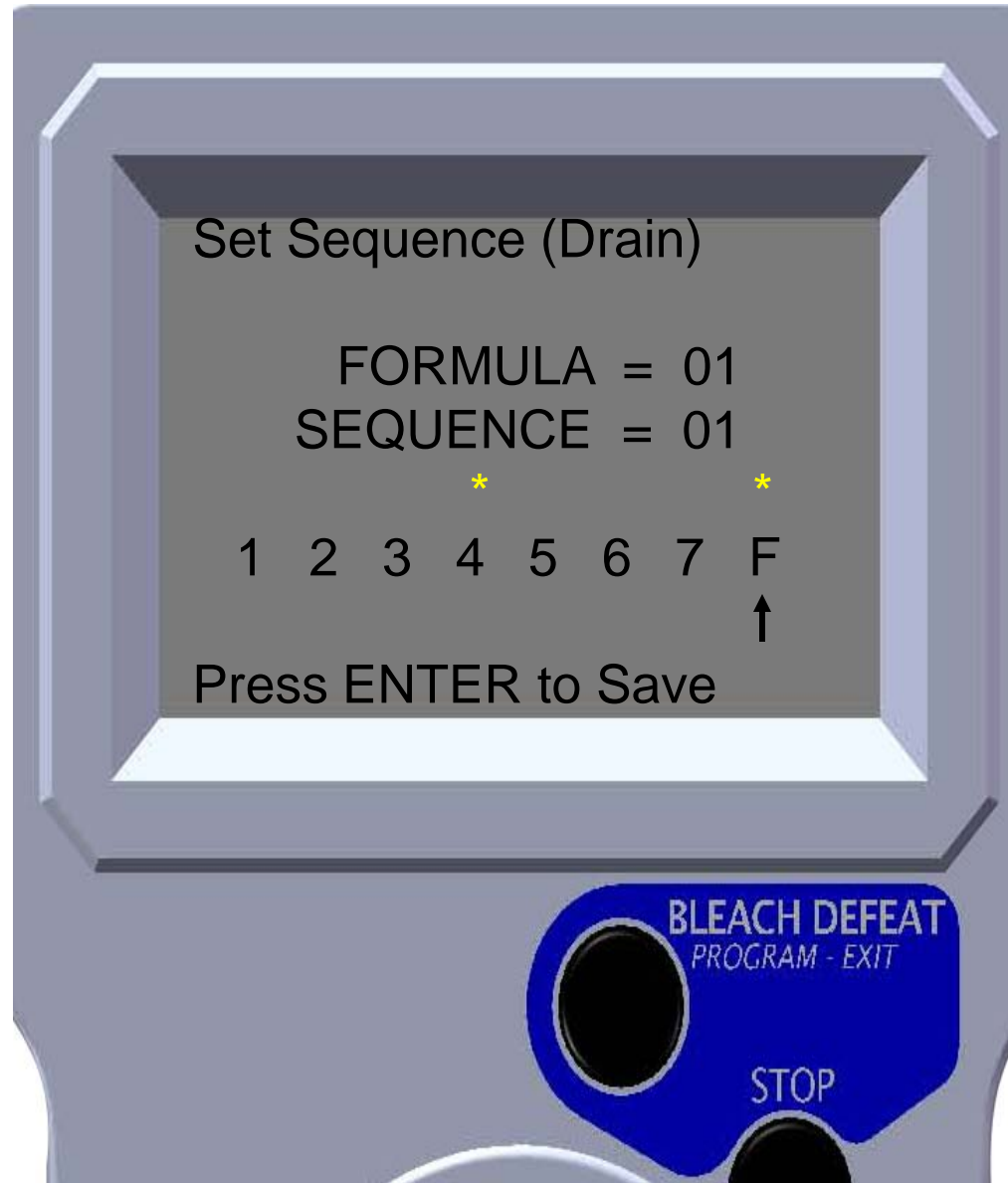
Set Up – Set Sequence

- The numbers 1 – 7 represent dispenser pumps and F represents final sequence (drain or fill)
- Use the LEFT & RIGHT arrows to move cursor under desired pump
- Press UP arrow to select pump (asterisk will appear)
- Press enter when desired pumps are selected



Set Up – Set Sequence

- Repeat process to set pump operation for each sequence number (drain or fill)
- On last sequence (drain or fill), set both sequence number and F for final drain or fill
 - Signals dispenser that last drain or fill operation has occurred



Set Up – Set Units

- Use UP & DOWN arrows to select desired units
- Press ENTER to select desired units
- Note: When ounces or Milliliters are chosen, the pump calibration screen will appear



Set Up – Test Formulas

- Used UP & DOWN arrows to select desired formula
- Use LEFT & RIGHT arrows to select desired pump and level
- Press enter to operate
 - Pump will run programmed amount



Configure

- Customizes operation parameters for specific application needs
 - Set Level Mode
 - Set Operate Mode
 - Set Flush Mode
 - Load Count Select
 - Bleach Def Select
 - Set Default Formula
 - Enter Folder Names



Configure – Set Level Mode

- Use UP & DOWN arrows to select desired setting
- Press ENTER to save setting
- Note: Level mode will automatically turn on when L2 setting is activated in pump volume screen



Configure – Set Operation Mode

- Use UP & DOWN arrows to move cursor to desired operation mode
- Press ENTER to select operation mode



Configure – Set Flush Mode

- Use UP & DOWN arrows to select desired setting
- Press ENTER to save setting



Configure – Load Count Select

- Use UP & DOWN arrows to select desired formula
- Press ENTER when desired formula is displayed
 - Cursor moves to pump number position
- Use UP & DOWN arrows to select desired load count pump
- Press ENTER when desired pump number is displayed



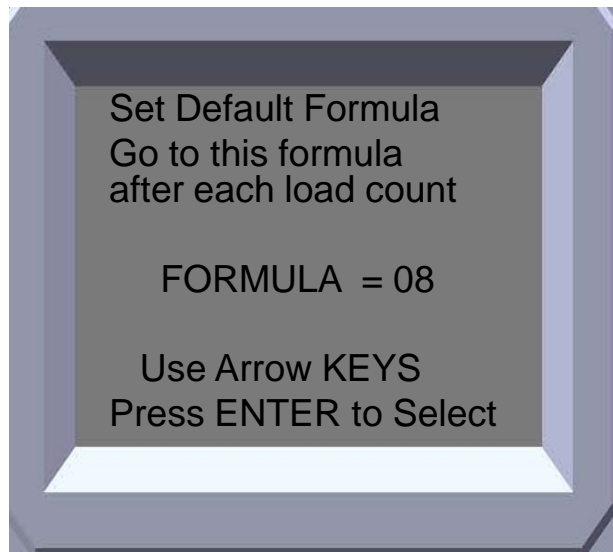
Configure – Bleach Defeat Select

- Use UP & DOWN arrows to select a bleach pump or no bleach pump
- Press ENTER when desired setting or pump is displayed



Configure

- Used UP & DOWN arrows to select a default formula or no default formula
- Press ENTER when desired default formula setting is displayed



Configure – Enter Folder Names

- Use UP & DOWN arrows to select folder
- Press ENTER to modify folder name



Configure – Enter Folder Names

- Use the LEFT & RIGHT arrows to move cursor to character positions
- Use UP & DOWN arrows to scroll through letters, numbers and symbols
- Press ENTER to save displayed folder name



Utility

- Provides various tools to customize dispenser needs
 - Send Folder
 - Capture Folder
 - Set Access Code
 - Set Formula Names
 - Set Product Names
 - Set Factory Default
 - Clear All Folders



Utility – Send Folder

- Use UP & Down arrow to choose yes or no
- Press ENTER to send folder



Utility – Capture Folder

- Use UP & Down arrow to choose yes or no
- Press ENTER to capture folder



Utility – Set Access Code

- Used UP & Down arrows to select Access code or user code
- Press ENTER to program code
- Note:
 - Access code for full access
 - User code for priming pumps and running reports



Utility – Set Access Code

- Use the LEFT & RIGHT arrows to move cursor to character positions
- Use UP & DOWN arrows to scroll through numbers
- Press ENTER to save displayed code
- Repeat process for User code



Utility – Set Formula

- Use UP & DOWN arrows to select formula
- Use the LEFT & RIGHT arrows to scroll through formula names



Utility – Set Formula Names

- “DO NOT USE” setting allows a formula to be disabled (not selectable by user)
- Press ENTER to disable a formula

OR

- Use LEFT & RIGHT arrows to scroll through formula names until desired pre-programmed name or customizable name is displayed



Utility – Set Formula Names

- Use the LEFT & RIGHT arrows to move cursor to character positions
- Use UP & DOWN arrows to scroll through letters, numbers and symbols
- Press ENTER to save displayed folder name



Utility – Set Product Names

- Use UP & DOWN arrows to select pump
- Use the LEFT & RIGHT arrows to scroll through product names
- Press ENTER when desired name is displayed



Utility – Set Product Names

- Use the LEFT & RIGHT arrows to move cursor to character positions
- Use UP & DOWN arrows to scroll through letters, numbers and symbols
- Press ENTER to save displayed folder name



Utility – Set Factory Default

- Used to set factory default of current folder
 - All values will go to zero or factory default setting in current folder
- Press ENTER to set factory default



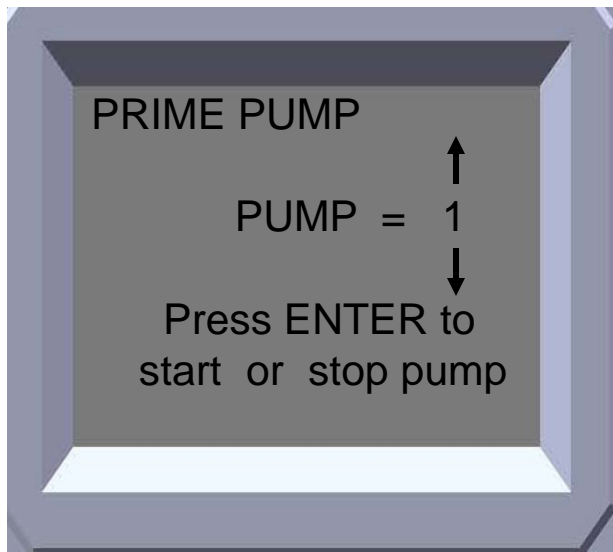
Utility – Clear All Folders

- Used to set factory default of all 8 folders
 - All values will go to zero or factory default setting in all folders
- Press ENTER to clear all folders
- **WARNING** – All setups will be deleted and can not be recovered



Prime Pump

- Use UP & Down arrows to select pump
- Press ENTER to prime pump



Prime Pump

- Used to calibrate the pump output
- Press ENTER to calibrate pumps



Pump Calibration

- Used to Calibrate chemical pumps in ml or oz. per minute
- Move the cursor to **CALIBRATE** and press **ENTER**
- A graduated cylinder to measure volume of output is required (200 ml minimum)
- Note: Unit screen will appear to ensure proper units are chosen



Pump Calibration

- Use the UP & DOWN arrows to move cursor to desired pump
- Position graduated cylinder under pump output to be calibrated
- Press ENTER to start calibration



Pump Calibration

- Pump will be running when this screen is displayed
- Allow pump to fill graduated cylinder 100 ml or more of the chemical product
- Press ENTER to stop pump



Pump Calibration

- Use LEFT & RIGHT arrows to move cursor across volume amount
- Use UP & DOWN arrow to increase or decrease the value of each character
- Volume pumped into graduated cylinder should match value shown on display
- Repeat calibration process for each pump



Data Management

- Allows set up of data collection for cost and invoice reporting
- Customizable screens include
 - Set Date
 - Set Time
 - Account Information
 - Machine Information
 - Cost Setup
 - Report Setup



Data Management - Set Date

- Press LEFT & RIGHT arrows to change the month and year
 - LEFT decreases or goes to the previous month / year
 - RIGHT increases or goes to the next month / year
- Press Down arrow to change the day of the month
 - The cursor will move down towards the days
- Use LEFT & RIGHT arrows to move to the day
- Press ENTER to select desired date



Data Management - Set Time

- Can set using 12 hr. (AM & PM) or 24 hr. format
- Use the UP & DOWN arrows to move the cursor between time display format and time
- Use the RIGHT arrow to move cursor into the adjustment mode
- Use UP & DOWN arrows to adjust values / numbers
- Use the LEFT & RIGHT to move cursor
- Press ENTER to save changes



Data Management – Account Information

- Provides name and account number that will appear on the report
- Move the cursor to Account Information and press ENTER



Data Management – Account Information

- The account information – Name, Account Number, and Account type can be modified to show on reports
- Use UP & DOWN arrows to move cursor between Name: Number: Set Account Type:
- Press ENTER when cursor is at desired item to modify



Data Management – Account Name & Number

- The account name can be up to 20 characters long and the account number can be up to 10 characters long
- Press enter to modify the name
- Use the LEFT & RIGHT arrows to move cursor to desired character
- Use UP & DOWN arrows to modify characters
- Press ENTER to accept the change



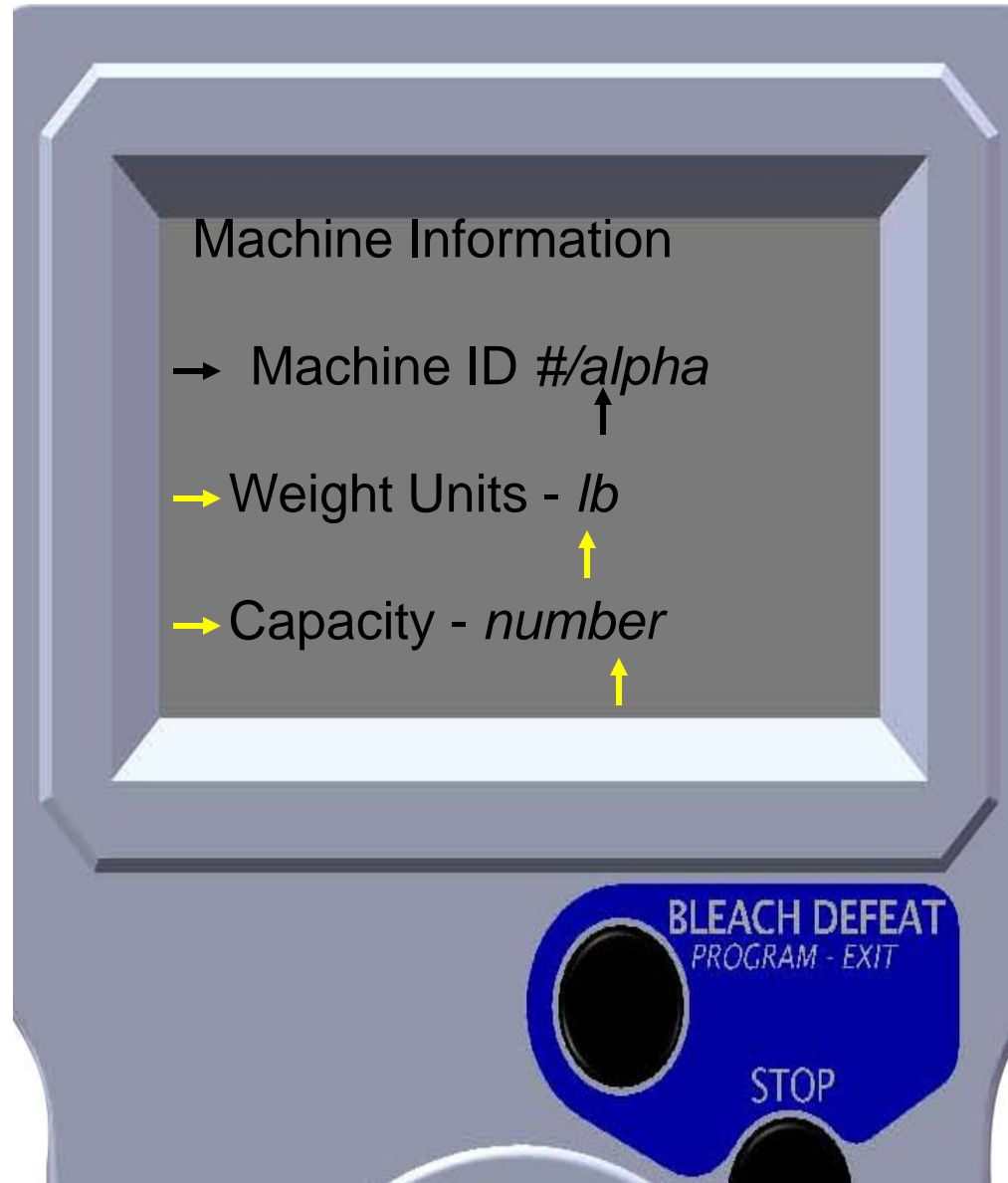
Data Management - Account Type

- The account type can be alpha and or numeric
- It can be up to 10 characters long and includes spaces
- Press enter to modify the number
- Use the LEFT & RIGHT arrows to move cursor to desired character
- Use UP & DOWN arrows to modify characters
- Press ENTER to accept the change



Data Management – Machine Information

- Use the UP & DOWN arrows to move the cursor between MACHINE ID, WEIGHT UNITS, AND CAPACITY
- Press enter to change field
- Use the UP & DOWN arrows to change the characters / values
- Use the LEFT & RIGHT arrows to move the cursor for field entry (machine ID and capacity)
- Press ENTER to change
- Note: Enter Capacity using 3 digits (less than 100 as 050)



Data Management - Cost Setup

- Sets up the system with units of measure and associated costs to generate calculated reports
- Set-up items include
 - Monetary Units:
 - Volume Units:
 - Shift Information
 - Product Cost
 - Price



Cost Set Up - Monetary & Volume Units

- Press enter with the cursor next to **MONETARY UNITS** or **VOLUME UNITS**
- Use the **UP & DOWN** arrows to move between choices
- Press **ENTER** when the desired symbol is displayed



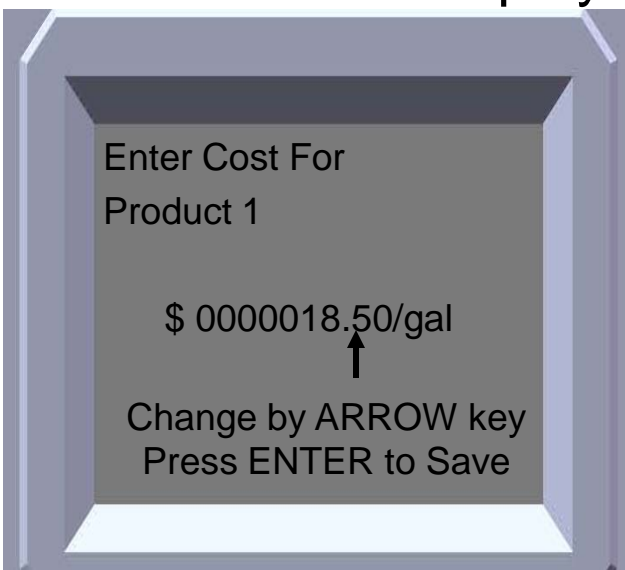
Cost Set Up - Shift Information

- Press ENTER with the cursor next to NUMBER OF SHIFTS
- Use the UP & DOWN arrows to change number of shifts and Press ENTER
- Move the cursor to each Shift and press enter
- Use the LEFT & RIGHT arrows to move across the time reading
- Use the UP & DOWN arrow to change the time
- Press ENTER to set the shift start time and move to the next shift or exit



Cost Set Up - Product Cost

- Use the UP & DOWN arrows to choose products and press enter
- Use the LEFT & RIGHT arrows to move cursor
- Use the UP & DOWN arrows to change each number
- Press ENTER when the desired cost is displayed



Cost Set Up - Price

- Used to set customer specific selling price
- Can be a based on load or 100 weight
- Use the UP & DOWN arrows to change between price per Load and 100 lb
- Press ENTER when the desired price method is displayed



Cost Set Up - Price

- Use the UP & DOWN arrows to change between price per Formula and Account Type
- Press ENTER when the desired price method is displayed



Cost Set Up - Price

- Use the UP & DOWN arrows to change the account type or formula and press enter
 - Only active account types and formulas will be listed
- Use the LEFT & RIGHT arrows to move cursor
- Use the UP & DOWN arrows to change each number
- Press ENTER when complete



Data Management - Report Setup

- Report setup allows you to set up the report with choices for cost per, period, billing cycle, monetary units and other information
- Also allows you to clear data and run reports



Report Setup - Type

- Type is the method of how the cost will be calculated
- The 3 choices are
 - COST/1LB or Kg
 - COST/100LB or Kg
 - COST/LOAD
- Use the UP & DOWN arrows to toggle between the 3 choices
- Press ENTER when the desired cost per is displayed



Report Setup - Period

- The 3 period choices
 - Billing Cycle
 - Length is days of a billing period
 - Billing Date
 - Day of month when billing period ends
 - Date to Date
 - Selectable period for start & end dates
- Use the UP & DOWN arrows to toggle between the 3 choices
- Press ENTER when the desired period is displayed



Report Setup – Billing Cycle Start

- Use UP & DOWN arrows to move cursor to Start and press ENTER
- Use the UP & DOWN arrows to move between the month / year and days of month
- Use the LEFT & RIGHT arrows to toggle through the months or the days of the month
- Press ENTER when the cursor is on the desired day

→ January, 2009

| | | | | | | |
|----|----|----|----|----|----|----|
| → | | | | 1 | 2 | 3 |
| 4 | 5 | 6 | 7 | 8 | 9 | 10 |
| 11 | 12 | 13 | 14 | 15 | 16 | 17 |
| 18 | 19 | 20 | 21 | 22 | 23 | 24 |
| 25 | 26 | 27 | 28 | 29 | 30 | 31 |



Report Setup – Billing Cycle Length

- LENGTH is used for BILLING CYCLE only
- The length can be set in any increment of days up to 93 days
- Use the UP & DOWN arrows to increase or decrease days
- Press ENTER when the desired number of days are displayed



Report Setup – Billing Date Start

- Use UP & DOWN arrows to move cursor to Start and press ENTER
- Use the UP & DOWN arrows to move between the month / year and days of month
- Use the LEFT & RIGHT arrows to toggle through the months or the days of the month
- Press ENTER when the cursor is on the desired day

→ January, 2009

| | | | | | | |
|----|----|----|----|----|----|----|
| → | | | | 1 | 2 | 3 |
| 4 | 5 | 6 | 7 | 8 | 9 | 10 |
| 11 | 12 | 13 | 14 | 15 | 16 | 17 |
| 18 | 19 | 20 | 21 | 22 | 23 | 24 |
| 25 | 26 | 27 | 28 | 29 | 30 | 31 |



Report Setup – Date to Date Start

- Use UP & DOWN arrows to move cursor to Start & press ENTER
- Use the UP & DOWN arrows to move between the month / year and days of month
- Use the LEFT & RIGHT arrows to toggle through the months or the days of the month
- Press ENTER when the cursor is on the desired day
- Repeat process for end date

→ January, 2009

| | | | | | | |
|----|----|----|----|----|----|----|
| → | | | | 1 | 2 | 3 |
| 4 | 5 | 6 | 7 | 8 | 9 | 10 |
| 11 | 12 | 13 | 14 | 15 | 16 | 17 |
| 18 | 19 | 20 | 21 | 22 | 23 | 24 |
| 25 | 26 | 27 | 28 | 29 | 30 | 31 |



Clear All Data

- Clear all data deletes all the data stored in memory
- Clear all data does not remove or erase the programming or setup information
- Press ENTER with the cursor next to **Clear ALL Data**
- Select yes to clear data or no to exit



Run Report

- Run report sets up the reports to be run
- Press ENTER with the cursor next to Run Report



Data Grip Reports

- **DATA SPREADSHEET**
 - Gives you all information in a “data dump” as a file to be opened as a spreadsheet
- **MACHINE REPORT**
 - Gives you most information like the data spreadsheet organized in report format to be opened as a text file



Data Grip Reports

- ACCOUNT SUMMARY
 - Gives combined multi-machine report (up to 8) to be opened as a text file
 - Note: You must run a machine report for each Data Grip / machine before running summary report
- SHIFT REPORT
 - Gives shift information for date and time stamp for a machine usage to be opened as a text file
- INVOICE REPORT
 - Give you a invoice information by account type and total for a given machine as a text file



Run Report

- All reports listed under RUN REPORT are designed to be loaded onto a USB memory device
- A file name needs to be added to the report selected
- The file name can be alpha numeric and up to 8 characters including spaces
- Use the UP & DOWN arrows to toggle between the reports
- Press enter when the arrow is on the desired report



Run Report

- For Bill Date & billing cycle
 - Dates can not be changed
 - Dates displayed have been predefined through bill date or bill cycle setup
 - Press enter to run report
- For Date to Date
 - Dates can be changed
 - Move cursor to start or end and press enter to select dates via calendar screen
- Note: Install USB memory device prior to pressing enter



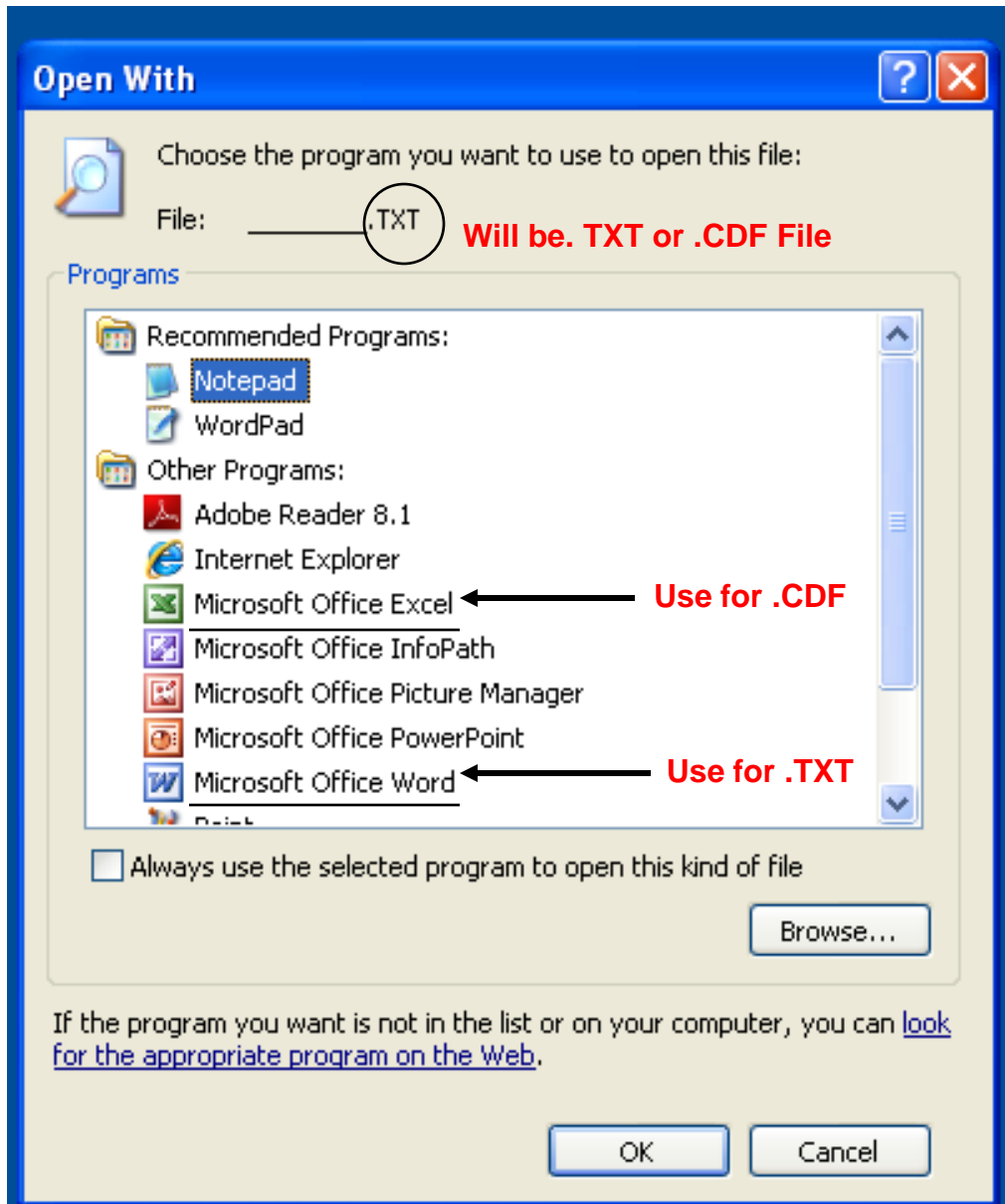
Run Report – Save File

- Use the LEFT & RIGHT arrows to move to each of the 8 character spaces for the file name
- Use the UP & DOWN arrows to change the character
- Continue until desired file name is created
- Press ENTER to save report on USB device



Viewing Reports

- Open USB memory device with PC or Laptop
- Right click on .TXT or .CDF file and choose “Open With Choose Program...”
- For opening .TXT files (most reports) use a word processing software
- For opening .CDF files (Data Spreadsheet only) use spreadsheet software



Maintenance

- Software
 - The operating software for the Data Grip
- USB Driver
 - Software that runs the USB drive on the Data Grip
- Dispensing Program
 - The dispenser setup, can be copied to any Data Grip
- DM Parameters
 - The data management setup, can be copied to any Data Grip
- Note: Software occasionally needs upgrading. Contact Dema Customer Service for current software updates



Dispenser Prog(ram)

- Allows you to import or export dispenser setups between Data Grips
 - A USB memory device is required
 - Import means from USB memory device to Data Grip
 - Export means from Data Grip to USB memory device
- One or all 8 folders can be imported / exported
- A file name up to 8 characters must be created to complete process



DM Parameters

- Allows you to import or export data management setup between Data Grips
 - A USB memory device is required
 - Import means from USB memory device to Data Grip
 - Export means from Data Grip to USB memory device
- Note: Only 1 data management setup can be imported / exported
- A file name up to 8 characters must be created to complete process





Data Grip Training

QUESTIONS?