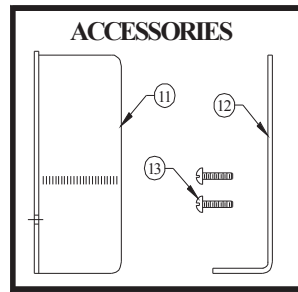
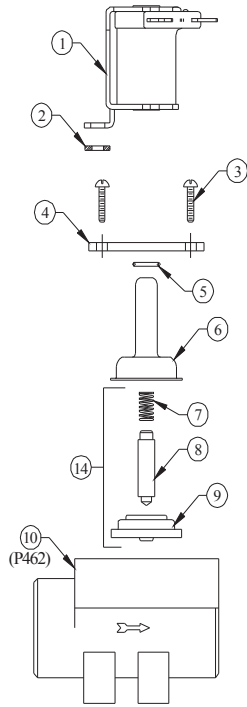


SOLENOID VALVE

P462 & P463 SERIES



(STANDARD ON P462J & P463J)

NO.	PART NO.	DESCRIPTION
1	41-9-5A-	Solenoid Coil (Specify Voltage)
2	41-41	Nylon Washer
3	44-116-1	Screw #8-18 x ½ Lg. (2 Req'd)
4	41-39-3	Flange
5	41-34	Spacer Ring
6	41-7-25	Enclosing Tube (Stainless)
7	41-1-8	Kick-Off Spring
8	41-10-11	Plunger
9	41-15-10	Diaphragm
10	35-36	Valve Body (P462)
ACCESSORIES (STANDARD ON P462J & P463J)		
11	41-38	Solenoid Cover
12	41-39	Mounting Bracket
13	41-40	Screw #6-32 X 5/16 Lg. (2 Req'd)
14	61-78	Valve Repair Kit