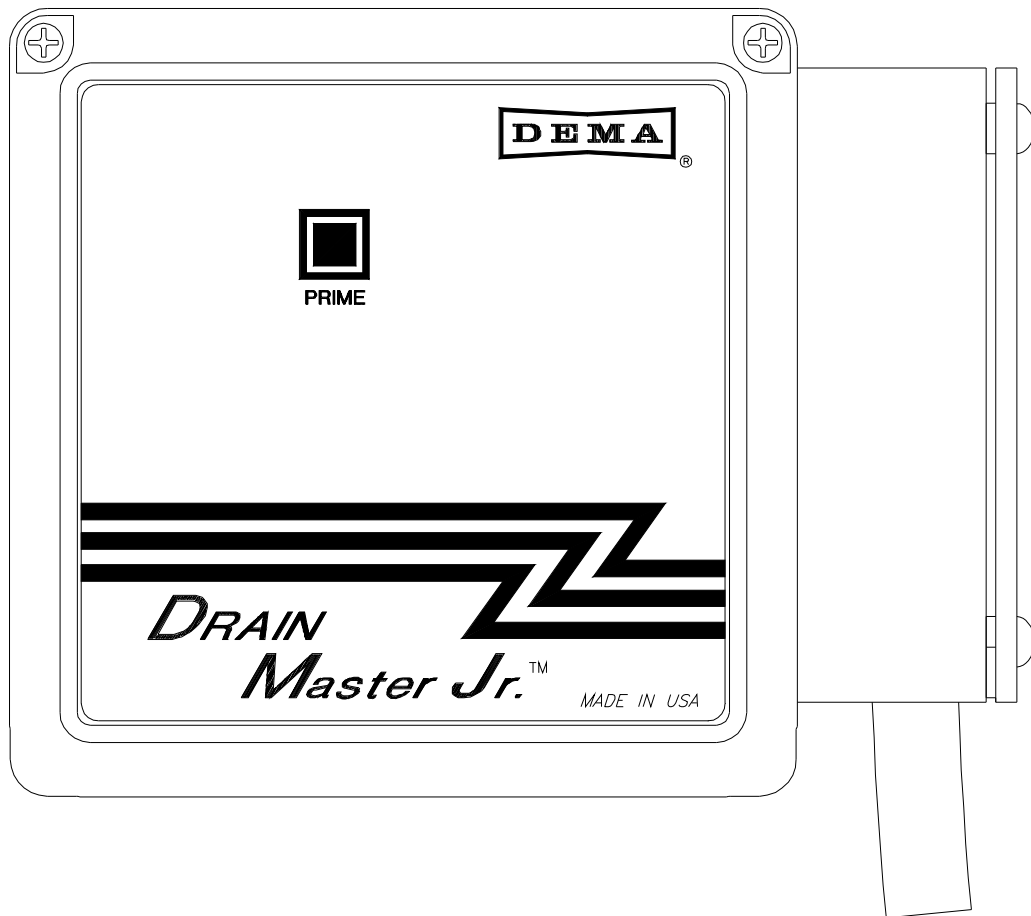


DEMA® 259BT TRASH MASTER INSTALLATION INSTRUCTION SHEET



DEMA® 259BT TRASH MASTER INSTALLATION INSTRUCTION SHEET

Purpose:

The 259BT Trash Master is designed to spray sanitizer or odor control chemicals through a spray nozzle into trash chutes and containers or similar applications. It accomplishes its goal by using the DEMA C4 pump and the electronic control module housed in a rugged plastic enclosure. The system comes with a grounded 120VAC power cord that simply plugs into a typical wall outlet for easy electrical installation. Additionally, programming is made easy by use of individual switches located on the electronic control module. All hardware for extending a spray nozzle up to 20 feet is included in the installation kit.

Please read all instructions before proceeding with Drain Master installation.

Survey Location:

Determine a location to hang the Trash Master on a wall near the drain or grease trap to be supplied with the chemical product. The Trash Master can be hung on the wall by use of the supplied wall bracket kit. The location should provide access to 120V 60Hz electrical power wall outlet. The power cord is approximately 5 feet long, make sure that the power cord will reach a 120VAC 60Hz wall outlet. If a wall outlet needs to be installed, it is recommended that a qualified electrician install the electrical outlet.

Electrical Hookup:

All installations must be in accordance with city, county, state or provincial electrical codes and be performed by a certified electrician. For questions, please contact local licensed electrical contractor.

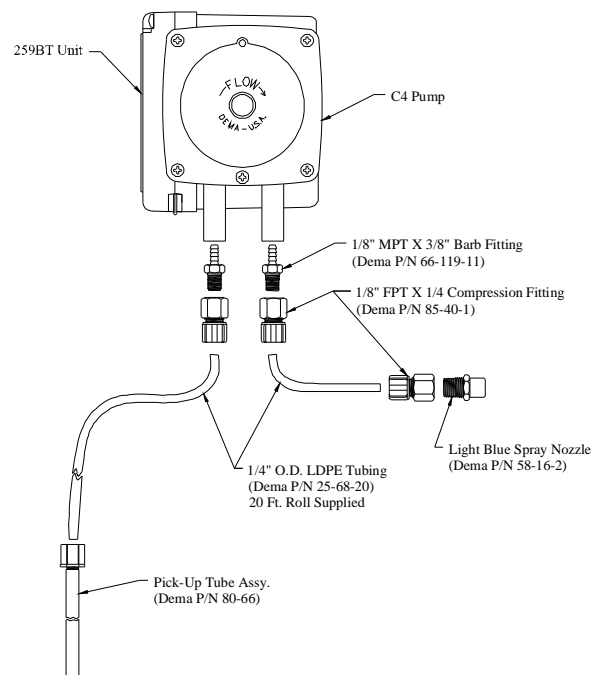
1. ***BEFORE GOING ANY FURTHER, ALL ELECTRICAL POWER MUST BE TURNED OFF TO THE CIRCUIT THAT IS TO BE USED FOR THIS INSTALLATION. LOCKOUT AND TAG PROCEDURES SHOULD BE OBSERVED WHEN INSTALLING THIS DEVICE. NEVER OPEN THE DRAIN MASTER UNLESS POWER HAS BEEN TURNED OFF. ONLY USE ELECTRICAL CODE APPROVED INSULATED WIRING AND ELECTRICAL FIXTURES WITH THIS INSTALLATION. EXTENSION CORDS ARE NOT RECOMMENDED FOR PROPER INSTALLATION. A WALL OUTLET MAY NEED TO BE INSTALLED TO ASSURE THAT INSTALLATION MEETS ALL APPLICABLE ELECTRICAL AND CONSTRUCTION CODES.***
2. Plug the power cord into a 120VAC 60Hz wall outlet.
3. The power cord must be secured properly between the wall outlet and 259BT unit. This will strain relieve the cord to assure that the power cord will not be snagged or pulled out of the wall outlet or the 259BT enclosure.
4. Install a 9 volt radio battery on the circuit board for memory backup, this allows for retention of the clock and other functions in the event of power failures. Note: Alkaline batteries are recommended for longer service life.

DEMA® 259BT TRASH MASTER INSTALLATION INSTRUCTION SHEET

Tubing Connections:

Install (2) 1/8" NPT x 1/4" compression fittings to the (2) 3/8" Barb x 1/8" NPT fittings. This done by connecting the 1/8" pipe fittings on each of the fittings. A sealant should be used on the pipe threads, such as teflon tape.

1. Install the assembled barb/compression fittings into the inlet and outlet of the C4 pump squeeze tube. The barb side should be inserted into the rubber squeeze tube and secured both on the inlet and outlet sides using zip wire ties.
2. Install (1) light blue spray nozzle into the (1) 1/8" NPT x 1/4" compression fitting. This is done by connecting the 1/8" pipe fittings on each of the parts. A sealant should be used on the pipe threads, such as teflon tape.
3. Determine and cut the length of 1/4" O.D. LDPE inlet tubing required between the container of chemical product and the inlet of the C4 pump.
4. Install the 1/4" O.D. LDPE tubing into the rigid PVC pick up tube assembly. This is done by loosening the compression nut on the pick tube so that the LDPE tubing will slide into the fitting. Slide the LDPE tubing until it is approximately 1/2" from the other end of the rigid pick up tube. Tighten the compression nut to secure the tubing.
5. Install the other end of the pick up tube (LDPE inlet tube) into the inlet side of the C4 pump. This is done by installing the end of the 1/4" LDPE tubing into the compression fitting at the inlet of the C4 pump.
6. Determine and cut the length of the 1/4" O.D. LDPE outlet tubing required to run between the C4 pump and the point that the chemical product is to be sprayed.
7. Install one end of the 1/4" O.D. LDPE tubing into the outlet side of the C4 pump. This is done by installing the end of the 1/4" LDPE tubing into the compression fitting at the inlet of the C4 pump.
8. Install the other end of the outlet 1/4" O.D. LDPE tubing to the spray nozzle. This is done by inserting the end of the LDPE tubing into the compression fitting that is fitted to the spray nozzle. Secure the tubing by tightening the compression nut.
9. Secure the nozzle to the point of spray.
10. Secure both the inlet and outlet LDPE tubing along its path.
11. Installation complete.



DEMA® 259BT TRASH MASTER INSTALLATION INSTRUCTION SHEET

Programming:

Open the cover on the Trash Master. All of the DIP switches should be visible on the control board on the backside of the cover. **All of these switches must be in the “off” position to begin programming.**

Time Set: Find the DIP switch that corresponds to the closest hour of the current time. There are 12 DIP switches for AM and 12 for PM. After finding the correct switch flip it to the “on” position. The “time set” LED will go out.

Feed Time: Using the same switches set the hours in which the Trash Master should operate by switching the appropriate switch to the “on” position.

Note: If the DIP switch that was set for the “time set” is not a desirable “feed time”, simply turn that switch to the “off” position. But not until at least one feed time has been selected. This will insure that the “time set” will not be lost.

Dosage: There is a series of 6 DIP switches which are labeled “dosage”. The number next to each switch indicates the approximate number of ounces that will be dispensed at each “feed time” that has been set.

The dosage switches will run the pump for multiples of 2 seconds and dispense approximately 1 ounce for each 2 seconds of pump run time.

For example, if switch 2 is in the “on” position the pump will run for 4 seconds and dispense approximately 2 ounces of product. These switches may be added together for higher doses. Example: Switches 5 and 6 in the “on” position will run the pump for 22 seconds and dispense approximately 11 ounces of product ($5+6=11$). If all 6 switches are set to the “on” position the unit will run for 42 seconds and dispense a maximum of approximately 21 ounces of product ($1+2+3+4+5+6=21$).

Note: The amount of product may vary slightly. It may be necessary to measure the amount of dosage with a graduated flask. The amount of dosage can be adjusted as described above.

Reprogram: Flip all the DIP switches to the “off” position and repeat the process.

Priming:

After installation is complete the pump and tubing will need to be primed so that chemical product will be delivered when the Trash Master is running. This is simply done by pressing and releasing the prime button on the front of the Trash Master; the pump should begin to run. The pump will run for the amount of time that the dose switches have been set.

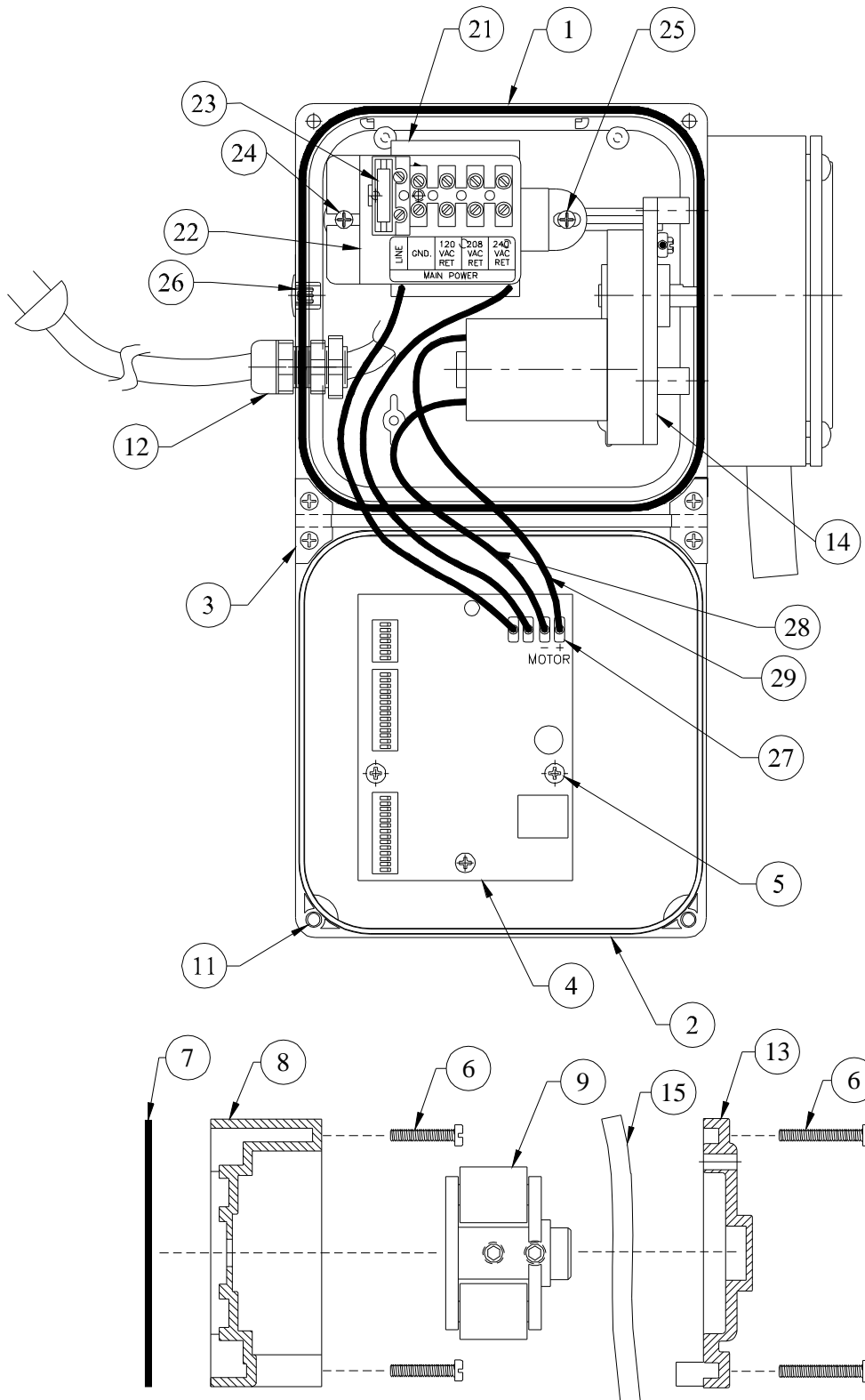
Note: At any time the Trash Master pump can be shut off by simply pushing the prime button again.

DEMA® 259BT TRASH MASTER INSTALLATION INSTRUCTION SHEET

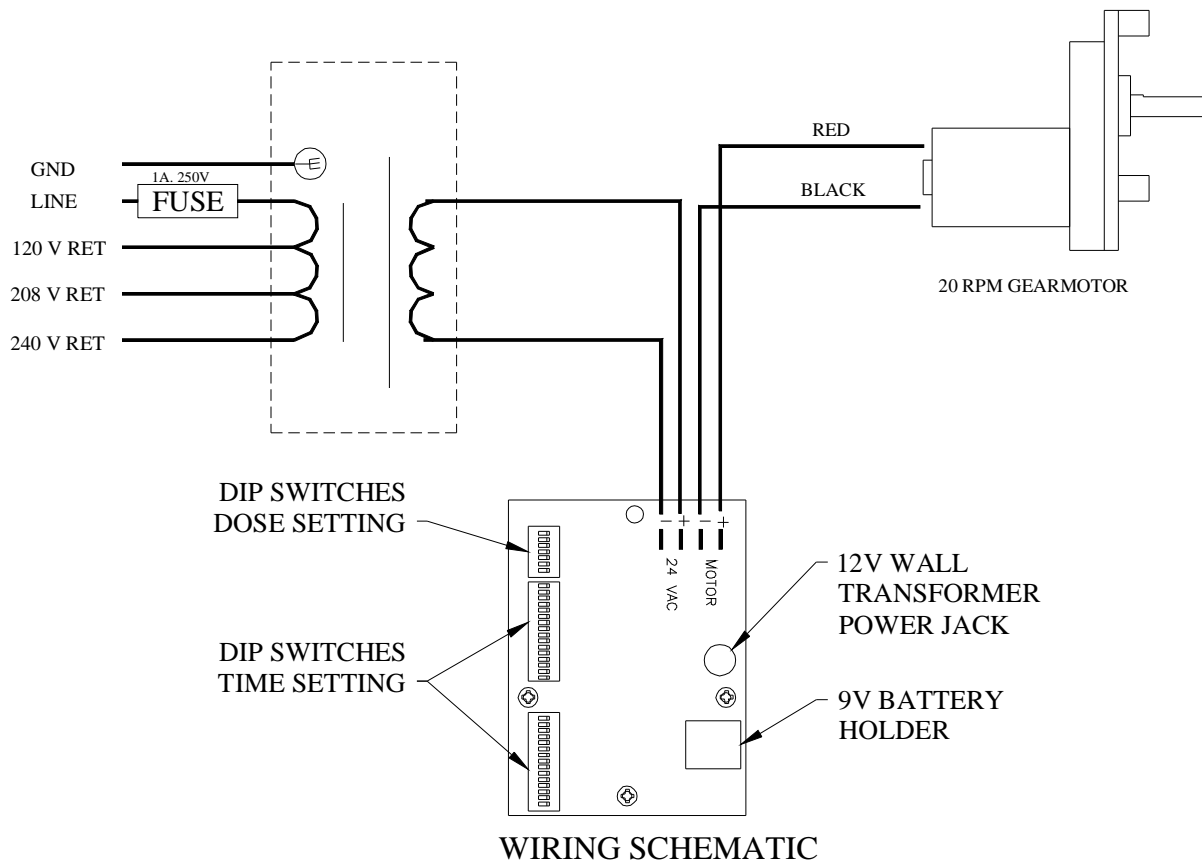
Replacement Parts			
Item No.	DEMA Part No.	Description	Amount Required
1	81-40	Electrical Enclosure Kit	1
2	81-41	Electrical Enclosure Cover Kit (81.29.2 Captive Screws included in kit)	1
3	81-6	Electrical Enclosure Hinge Kit	2
4	25-121-2	Trash Master Electronic Control Board	1
5	81-20-2	Control Board Screw	3
6	25-85-5	#10-32 x 1" Pump Screw	9
7	81-63	Pump Mounting Adapter Plate	1
8	25-129-1	C4 Granite Color Pump Head	1
9	25-86C4	C4 Pump Roller Block (2 Roller)	1
10	25-114C4	C4 Pump Gasket	1
11	81-29-2	Captive Screw for Electrical Enclosure Cover	2
12	81-16	Liquid Tight Feed Thru	1
13	25-87C4	C4 Clear Pump Face Plate	1
14	80-59-60MK	Gear Motor Assembly – 60 RPM	1
15	25-89CE-14	EPDM Pump Squeeze Tube	1
16	25-68-20	20 Ft of ¼" LDPE Tubing (white tubing, not shown)	1
17	80-66	10" Pick Up Tube Assembly (grey PVC tube with white nut, not shown)	1
18	81-1	Wall Bracket Kit (stainless plate with screws, not shown)	1
19	25-113	9 Volt Alkaline Battery (not included with unit, not shown)	1
20	L768-1	Drain Master Label (front face label)	1
21	80-70	40VA Transformer	1
22	25-139-4	Fused Terminal Block and Bracket assembly (fuse included in terminal block)	1
23	25-138-1	Fuse, 5mm x 20mm 1A, 250V	1
24	44-116-1	#8 x ½" Hi-Lo Screw	1
25	44-116-2	#8 x 3/8" Hi-Lo Screw	1
26	81-47-1	7/8" Hole Plug	1
27	81-14-15	Female Quick Connect	2
28	81-32-43	Black Cable Assembly	1
29	81-32-44	Red Cable Assembly	1

See the diagrams on the following pages to aid in identifying parts.

DEMA® 259BT TRASH MASTER INSTALLATION INSTRUCTION SHEET



DEMA® 259BT TRASH MASTER INSTALLATION INSTRUCTION SHEET



Warranty

DEMA products are warranted against defective material and workmanship under normal use and service for one year from the date of manufacture. This limited warranty does not apply to any products, which have a normal life shorter than one year or failure and damage caused by chemicals, corrosion, improper voltage supply, physical abuse, or misapplication. Rubber and synthetic rubber parts such as “O” rings, diaphragms, squeeze tubing and gaskets are considered expendable and are not covered under warranty. This warranty is extended only to the original buyer of DEMA products. If products are altered or repaired without prior approval of DEMA, this warranty is void.

Return Policy

No merchandise may be returned for credit without the written permission of DEMA Engineering Company. A return merchandise authorization (RMA) number is required in advance of return.