

PINNACLE™ by DEMA® Series Hardware Manual

DP-812-DL-1T DP-813-DLL-1T
DP-812-LL-1T DP-813-LLL-1T

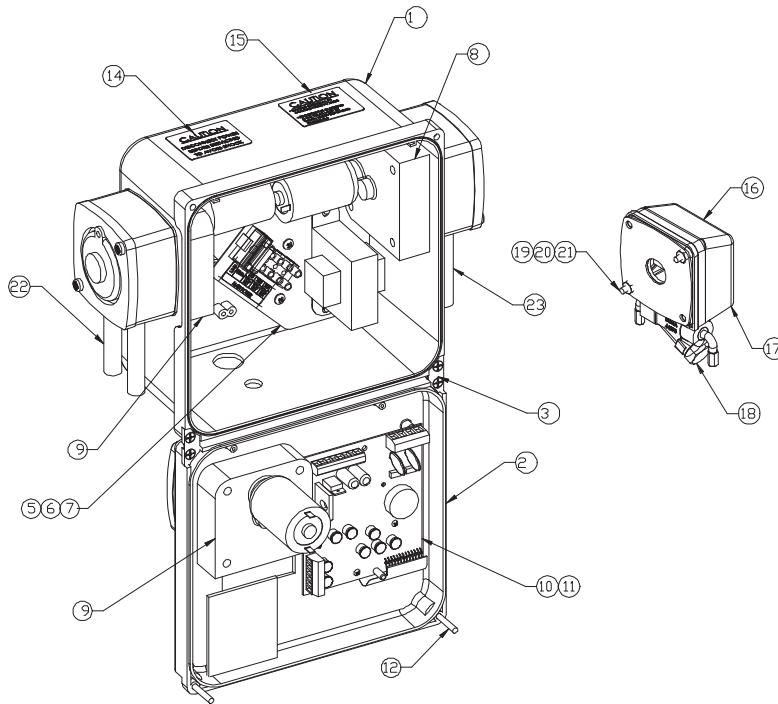


Table 2

Replacement Parts			
Item No.	DEMA Part No.	Qty Required	Description
1	81-2	1	Pinnacle™ by DEMA® Double Control Box
2	81-5	1	Pinnacle™ by DEMA® Double Control Box Lid
3	81-6	1	Hinge and Screw Kit
4	81-1	1	Mounting Bracket Kit
5	81-120-1	1	Transformer, Terminal Block & Bracket Assy.
6	44-116-1	3	# 8 x ½ HI-LO Screw (mounting transformer assy.)
7	81-138-1	1	Fuse 1A, 250V
8	80-59-60CE	1	60 RPM Gear/motor with noise suppression
9	80-59-15CE	1-Rinse, 1-Sanitizer	15 RPM Gear/motor with noise suppression
10	81-116-6	1	Pinnacle™ Control Board
11	81-20-2	3	# 4 HI-LO Screw (mounting circuit board)
12	81-29-2	2	Captive Screw
13	81-47-1	1	Hole Plug
14	L604	1	Caution Label – Electrical
15	L605	1	Caution Label - Chemical
16	44-125	1	Solenoid Cover
17	44-116-1	1	Cover Screw
18	44-123-4B	1	Solenoid Valve-Detergent (Dry Feed Models)
19	44-124-2	2	Solenoid Mounting Screw
20	44-29	2	Lock Washer
21	44-90	2	Hex Nut
22	25-65RE-11	2	Squeeze Tube - Rinse
23	25-65CE-11	1	Squeeze Tube - Detergent