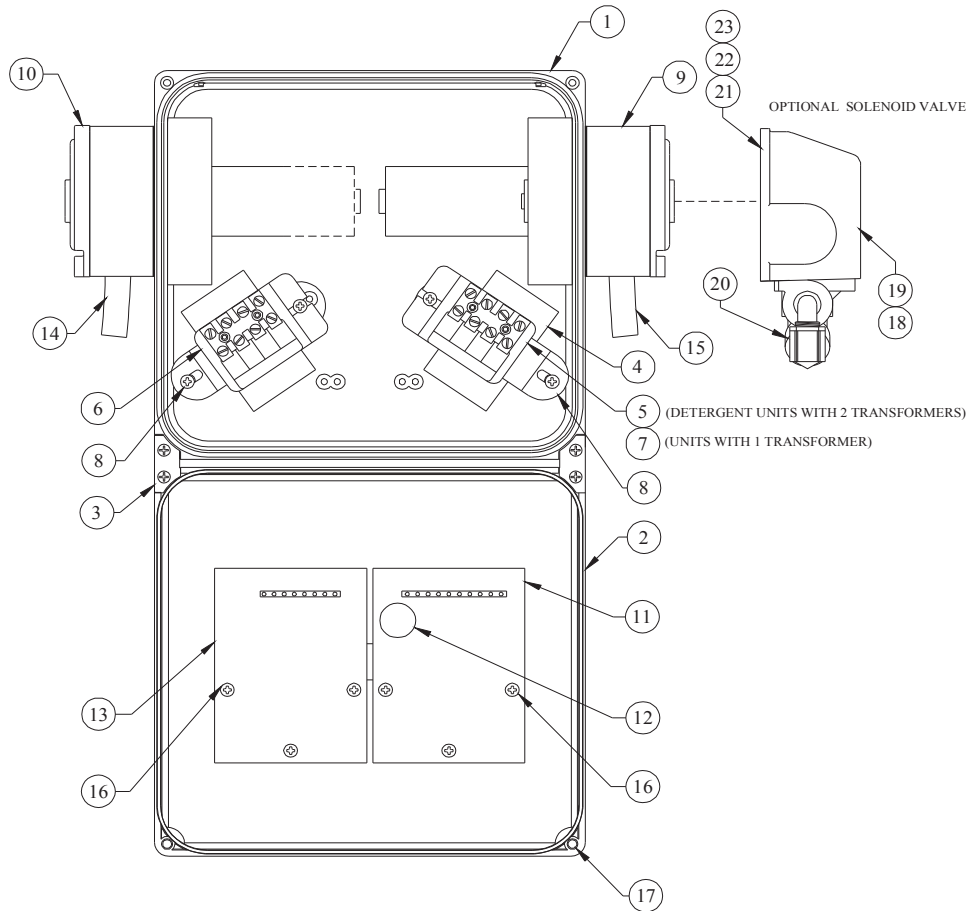
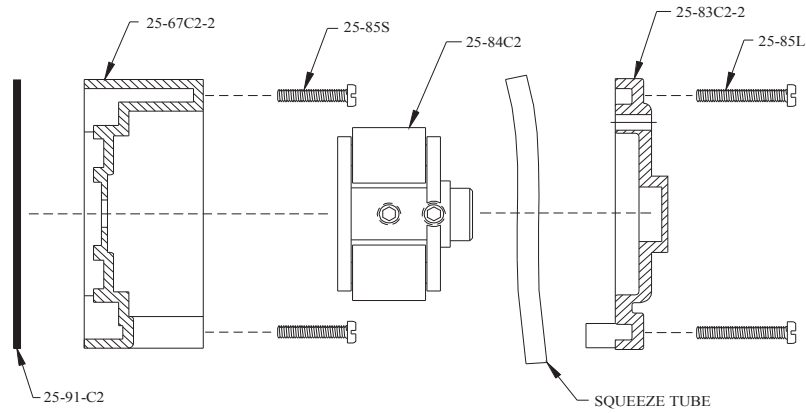


# DEMAMaster™ DM-812 Series Probe and Probeless



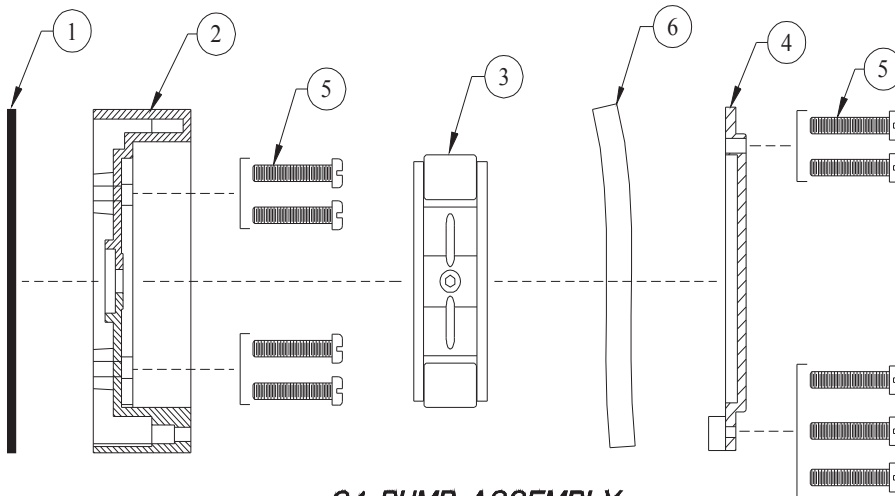
Replacement Parts			
Item No.	DEMA Part No.	Qty Required	Description
1	81-2	1	DEMAMaster Double Control Box
2	81-5	1	DEMAMaster Double Control Box Lid
3	81-6	1	Hinge and Screw Kit
4	80-70	1-Qty Model No. ends 1T 2 Qty Model No. ends 2T	Transformer 40VA
5	81-10-1	1	Terminal Block & Bracket Assy. (Detergent, units with 2 transformers)
6	81-10-2	1	Terminal Block & Bracket Assy. (Rinse, units with 2 transformers)
7	81-10-5	1	Terminal Block & Bracket Assy. (units with 1 transformer)
8	44-116-1	2 / Transformer	# 8 x ½ HI-LO Screw (mounting transformer)
9	80-59-60MK	1	60 RPM Gear/motor
10	80-59-15MK	1/Rinse	15 RPM Gear /moter
11	81.118.5	1	Probeless Detergent Control
	81.259.1	1	Concntration Detergent Control
12	80-99	1	Coin Cell Battery (CR2032) (for Probeless Detergent Control Board)
13	81.118.3	1 (for 812 Models)	Rinse Control Board (circuit board for controlling rinse)
14	25-65RE-11	2	Squeeze Tubè - Rinse
15	25-65CE-11	1	Squeeze Tube - Detergent
16	81-20-2	3 / control board	# 4 HI-LO Screw (mounting circuit boards)
17	81-29-2	2	Captive Screw
18	44-125	1	Solenoid Cover
19	44-116-1	1	Cover Screw
20	44-123-4B	1	Solenoid Valve-Detergent (Dry Feed Models)
21	44-124-2	2	Solenoid Mounting Screw
22	44-29	2	Lock Washer
33	44-90	2	Hex Nut

# DEMA<sup>TM</sup> DM-812 Series Probe and Probeless



## C2 PUMP ASSEMBLY

C2 Pump Replacement Parts	
Part No.	Description
25-91-C2	C2 Pump Head Gasket
25-67C2-2	C2 Pump Head
25-84C2	C2 Roller Block (2 roller)
25-83C2-2	C2 Face Plate
25-85S	#10-32 X 1 3/4" Machine Screw
25-85L	#10-32 X 2 1/4" Machine Screw
25-C2D	C2 Pump Head Kit (kit includes C2 Pump parts listed in this table except squeeze tubes)
25-65CE-11	1/2"OD x 1/4" ID Squeeze Tube EPDM
25-65RE-11	1/2"OD x 3/16" ID Squeeze Tube EPDM
25-65CV-11	1/2" OD x 1/4" ID Squeeze Tube Viton



## C4 PUMP ASSEMBLY

C4 Pump Replacement Parts		
Item No.	DEMA Part No.	Description
1	25.114C4	C4 Pump Head Gasket
2	25.129.1	C4 Pump Head Assembly
3	25.86C4	C4 Roller Block Assembly
4	25.87C4	C4 Face Plate
5	25.85.5	#10-32 x 1" Machine Screw
6	25.89CE.14	Squeeze Tube 5/8" OD x 3/8" ID