

Parts List For DAH Blend Center (Bottle/Hose Fill Applications)

(Some models may not include all items listed below)

(Always order by part number)

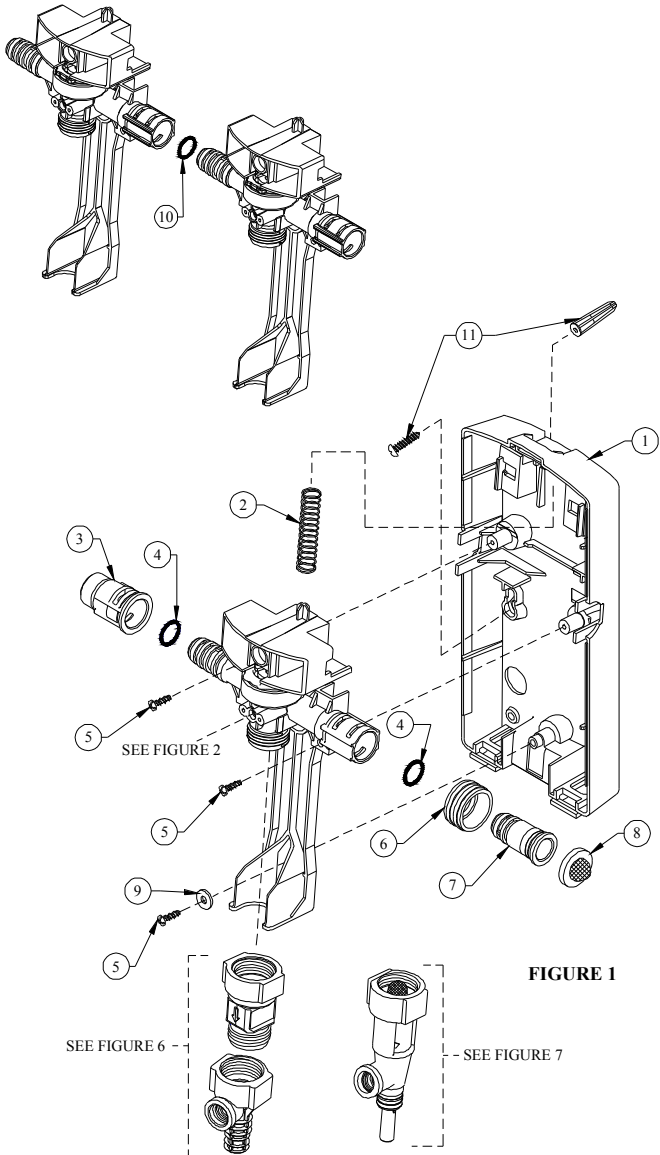


FIGURE 1

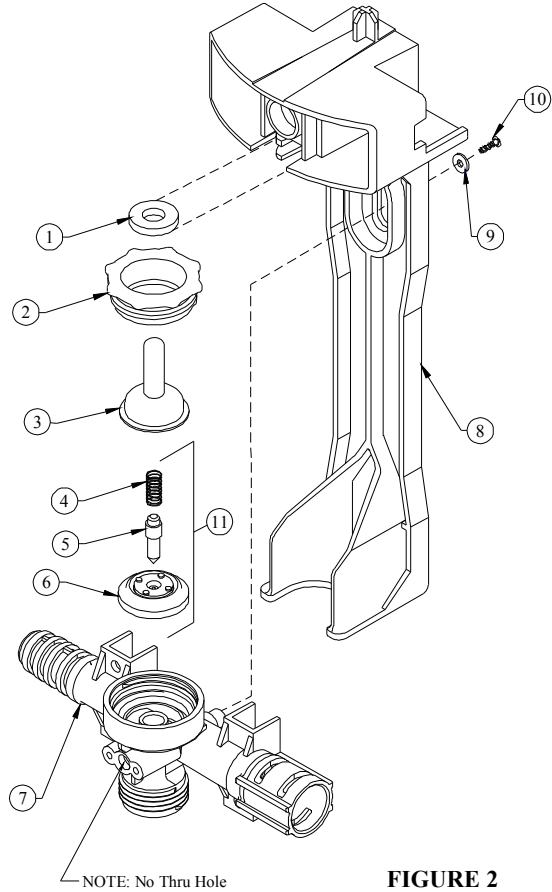


FIGURE 2

FIGURE 1: BOTTLE/HOSE FILL BASE UNIT		
NO.	PART NO.	DESCRIPTION
1	98-4-1	Base
2	98-21-1	Compression Spring (Lever)
3	98-9-1	Cap
4	619-15	O-Ring (2 Req'd)
5	44-116-1	#8 Hi Lo Screw ½" Lg. (3 Req'd)
6	65-10	Hose Coupling, US
	98-55-1	Hose Coupling, Euro
7	98-10-1	Water Inlet Stem
8	100-38	Strainer Washer
9	98-20-1	Nylon Washer
10	619-15	O-Ring (1 Req'd Between Each Valve Body)
11	98-40-1	#10 Screw & Anchor Set (QTY 2 Each/Set)

FIGURE 2: BOTTLE/HOSE FILL VALVE SUBASSEMBLY		
NO.	PART NO.	DESCRIPTION
1	63-35	Magnet
2	98-7-2	Enclosing Tube Nut
3	41-7-25	Enclosing Tube
4	98-41-1	Spring
5	98-24-1	Plunger
6	41-15-10	Diaphragm w/ center hole (EPDM)
7	98-11-1	Valve Body for Bottle/Hose Fill
8	98-8-1	Lever (Valve Actuator)
9	98-20-1	Washer, Nylon
10	44-116-1	#8 Hi Lo Screw X ½" Lg.
11	98-25-1	Bottle/Hose Fill Repair Kit

Parts List For DAH Blend Center (Remote Fill Hose Assembly Application)

(Some models may not include all items listed below)

(Always order by part number)

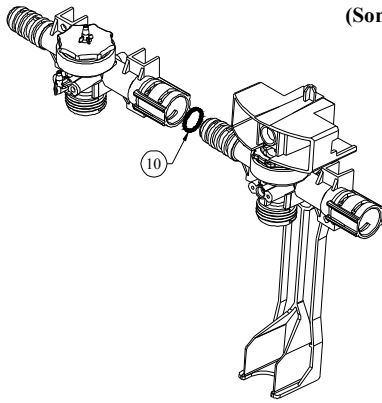


FIGURE 3

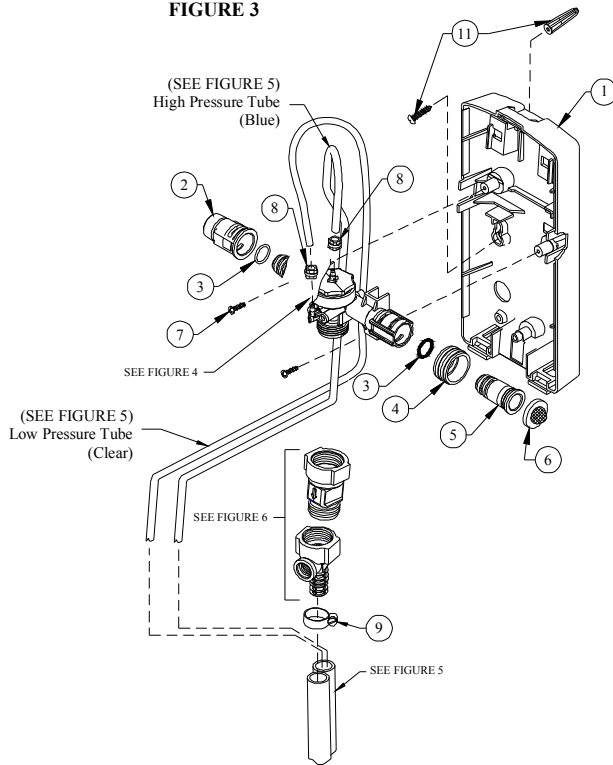


FIGURE 4

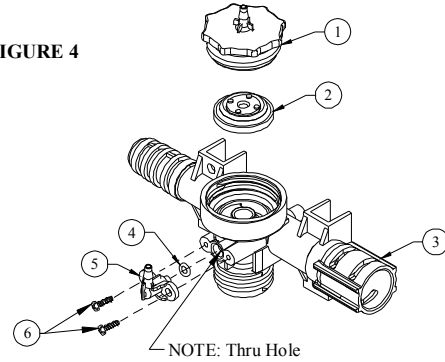


FIGURE 4: REMOTE FILL VALVE SUBASSEMBLY

NO.	PART NO.	DESCRIPTION
1	98-5-2	Nut, Diaphragm
2	98-26-1	Diaphragm without center hole (EPDM)
3	98-11-2	Valve Body for Remote Fill
4	26-35	O-ring
5	98-15-1	Elbow
6	58-60	#6 Hi-Lo Screw X 1/2" Lg. (2 Req'd)

FIGURE 5

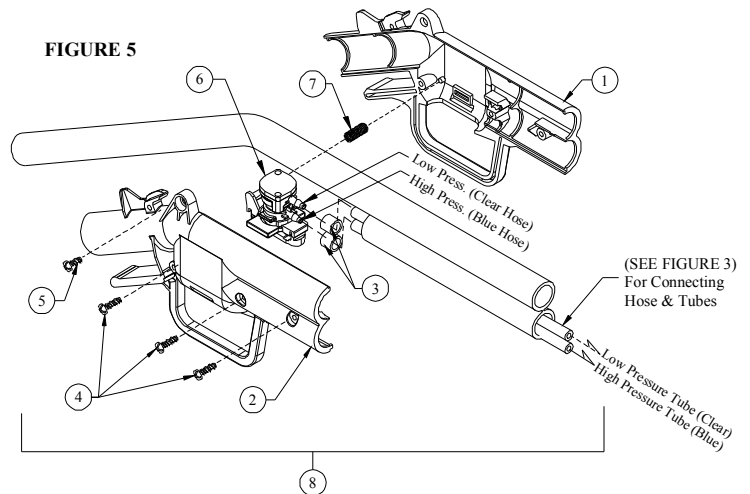


FIGURE 3: REMOTE FILL BASE UNIT

NO.	PART NO.	DESCRIPTION
1	98-4-1	Base
2	98-9-1	Cap
3	619-15	O-Ring (2 Req'd)
4	65-10	Hose Coupling
5	98-10-1	Water Inlet Stem
6	100-38	Strainer Washer
7	44-116-1	#8 Hi Lo Screw 1/2" Lg. (3 Req'd)
8	98-12-1	Hose Clamp (2 Req'd)
9	76-2-15	Hose Clamp
10	619-15	O-Ring (1 Req'd Between Each Valve Body)
11	98-40-1	#10 Screw & Anchor Set (QTY 2 Each/Set)

FIGURE 5: REMOTE FILL HOSE ASSEMBLY

NO.	PART NO.	DESCRIPTION
1	98-30-1	Remote Gun Fill Half (R.H.)
2	98-31-1	Remote Gun Fill Half (L.H.)
3	98-37-1	Hose Clamp (2 Req'd)
4	58-102	#6 Hi Lo Screw X 3/4" Lg.
5	58-60	#8 Hi Lo Screw X 1/2" Lg.
6	98-38	Valve Assembly
7	98-51	Compression Spring
8	98-50	Remote Fill Assembly

Parts List For DAH Blend Center

(Some models may not include all items listed below)

(Always order by part number)

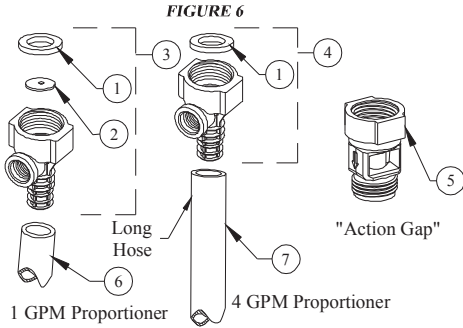


FIGURE 6: "ACTION GAP"/PROPORTIONER		
NO.	PART NO.	DESCRIPTION
1	150-6	Rubber Washer
2	61-36	Flow Disk
3	61-99GAP-3	Proportioner Assembly (1 GPM)
4	61-22GAP-3	Proportioner Assembly (4 GPM)
5	16-30	Action Gap Assembly
6	98-42-2	Hose, 1/2" I.D. Outlet (9-1/4" Lg.)
7	98-46-3	Hose, 1/2" I.D. Outlet (6 Ft. Lg.)

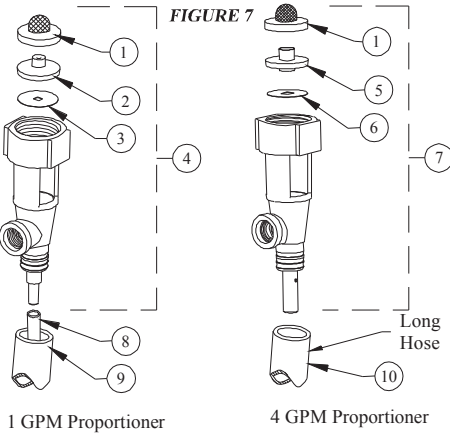


FIGURE 7: "AIR GAP"/PROPORTIONER		
NO.	PART NO.	DESCRIPTION
1	100-59	Strainer Washer
2	63-74-2	Nozzle
3	63-77	Screen
4	61-32AGP	Proportioner Assembly (1 GPM)
5	63-73	Nozzle
6	63-76	Screen
7	61-126-AG-4	Proportioner Assembly (4 GPM)
8	63-82	Hose, 3/16" I.D. Outlet (7" Lg.)
9	98-43-1	Hose, 9/16" I.D. Outlet (9-3/4" Lg.)
10	98-47-1	Hose, 9/16" I.D. Outlet (6 Ft. Lg.)

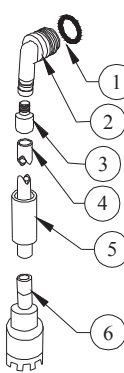


FIGURE 8

FIGURE 8: "1/4" BARB & TUBING		
NO.	PART NO.	DESCRIPTION
1	63-78	O-Ring
2	63-79	Elbow, 1/4
3	100-15K	Metering Tip Kit (14 Sizes)
4	100-12	Hose, 1/4" I.D. X 8 Ft. Lg.
	100-12E	Hose, 1/4" I.D. X 50 Ft. Lg.
5	61-107-2	Ceramic Weight 3/8" I.D.
6	100-16E	Foot Valve Assembly

FIGURE 9

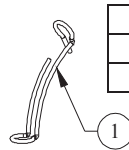


FIGURE 9: BUCKET FILL HOSE HANGER		
NO.	PART NO.	DESCRIPTION
1	16-4-3	Outlet Bucket Fill Hose Hanger

FIGURE 10: NONLOCKABLE BUTTON MODIFICATION!

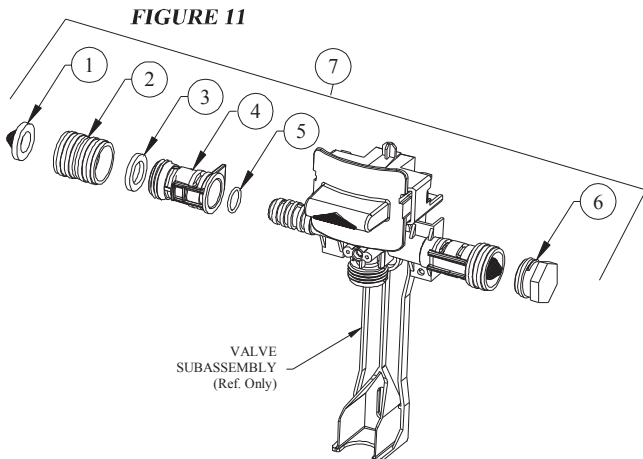
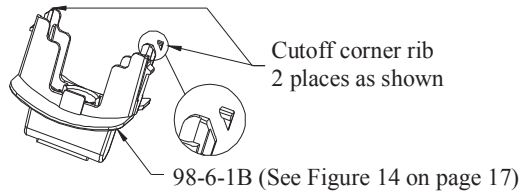


FIGURE 11: LEFT HAND HOSE INLET KIT		
NO.	PART NO.	DESCRIPTION
1	100-38	Strainer Washer
2	98-56-1	Double Female Swivel Garden Coupler
3	150-6	Rubber Washer
4	98-52-1	Hose Adapter
5	619-15	O-ring
6	98-53-1	Male Garden Hose Plug
7	98-54-1	Left Hand Hose Inlet Kit

Parts List For DAH Blend Center

Some models may not include all items listed below)

(Always order by part number)

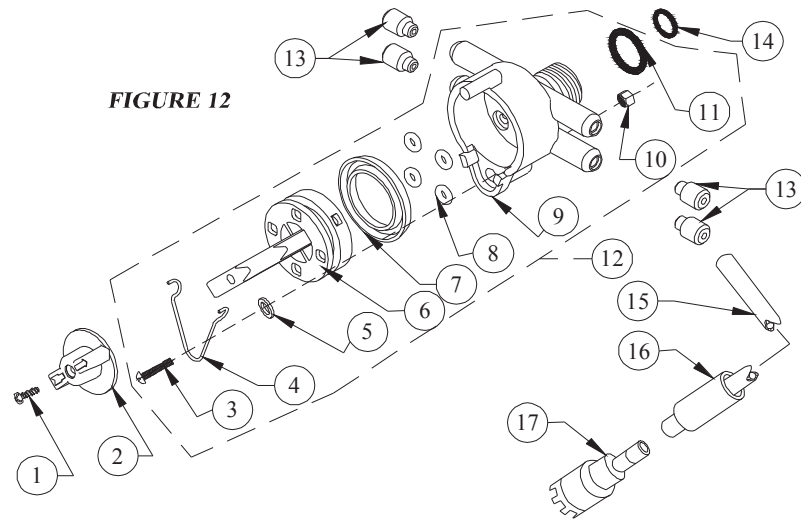


FIGURE 12

FIGURE 12: SELECTOR ASSEMBLY		
NO.	PART NO.	DESCRIPTION
1	58-60	#6 HI-LO Screw
2	63-111-2	Selector Knob
3	63-103	Screw, RD Head
4	63-100	Retainer
5	63-104	Washer
6	63-101-2	Knob
7	63-51	Seal Ring
8	25-77	O-Ring (4 Req'd)
9	63-98	Selector Body
10	66-13	Nut
11	63-78	O-Ring
12	63-96-3	Selector Assembly
13	100-15K	Metering Tip Kit (14 Sizes)
14	66-40	O-Ring
15	100-12	Tube, 1/4 I.D. 8 Ft. Length
	100-12E	Tube, 1/4 I.D. 50Ft. Length
16	61-107-2	Ceramic Weight 3/8" I.D.
17	100-16E	Foot Valve Assembly

FIGURE 13

SEE FIGURE 12
(NOTE: Selector must be installed into proportioner prior to installing "Multi-Dilution Tubing")

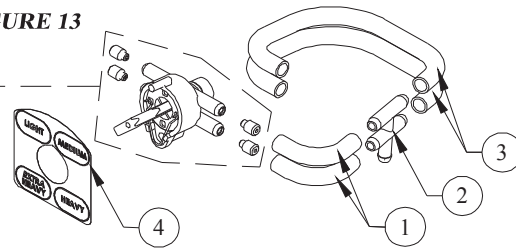


FIGURE 13: MULTI-DILUTION TUBING

NO.	PART NO.	DESCRIPTION
1	98-44-1	Tube, 2 3/8" Long (2 Req'd)
2	100-60	Barb Fitting
3	98-45-1	Tube, 7" Long (2 Req'd)
4	L835	Multi-Dilution Label (Shown)

FIGURE 14

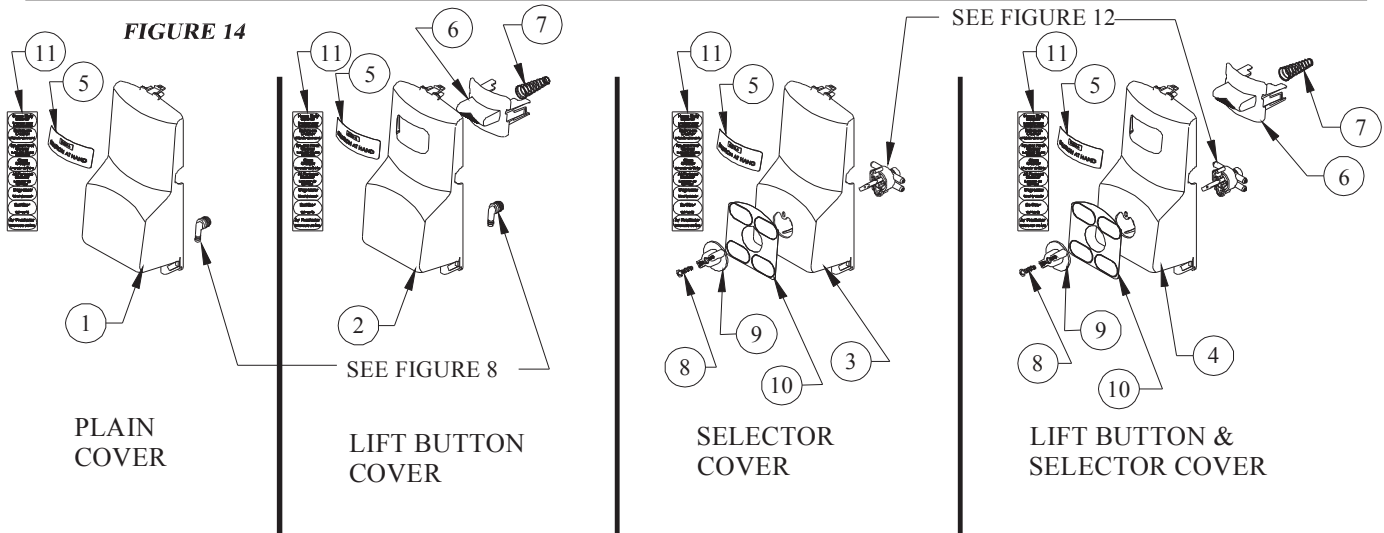


FIGURE 14: COVER, LIFT BUTTON, & SELECTOR ASSY. APPLICATION

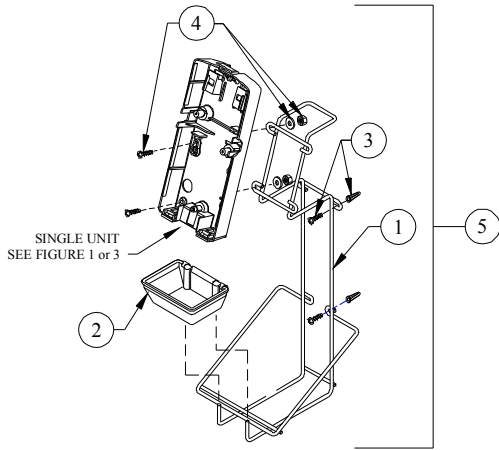
NO.	PART NO.	DESCRIPTION	NO.	PART NO.	DESCRIPTION
1	98-3-1	Plain Cover	7	63-36	Spring, Lift Button
2	98-3-3	Cover w/Lift Button	8	58-60	#6 Hi-Lo Screw
3	98-3-2	Cover w/Selector	9	63-111-2	Selector Knob
4	98-3-4	Cover w/Lift Button & Selector	10	L828	Blank Selector Label (Shown)
				L835	Multi-Dilution Label (See Figure 13)
5	L827	Label, Bottle & Hose Fill	11	L829	Chemical Label
	L856	Label, Remote Fill			
6	98-6-1B	Lift Button			

Parts List for DAH Rack Assemblies

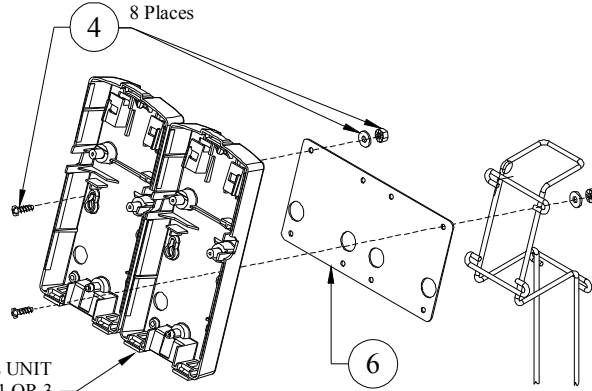
(Some models may not include all items listed below)

(Always order by part number)

FIGURE 15: SINGLE RACK & DRIP TRAY ASSY.		
NO.	PART NO.	DESCRIPTION
1	98-105-1	Single Product Rack
2	98-104-1	Drip Tray
3	66-127	#12 Screw & Anchor Kit (Qty. 4 Each/Set)
4	98-103-1	#10 Screw, Washer & Nut Kit (Qty. 4 Each/Set)
5	98-112-1	Single Product Rack/Drip Tray Kit
6	98-90-1	Plate, DAH Mounting

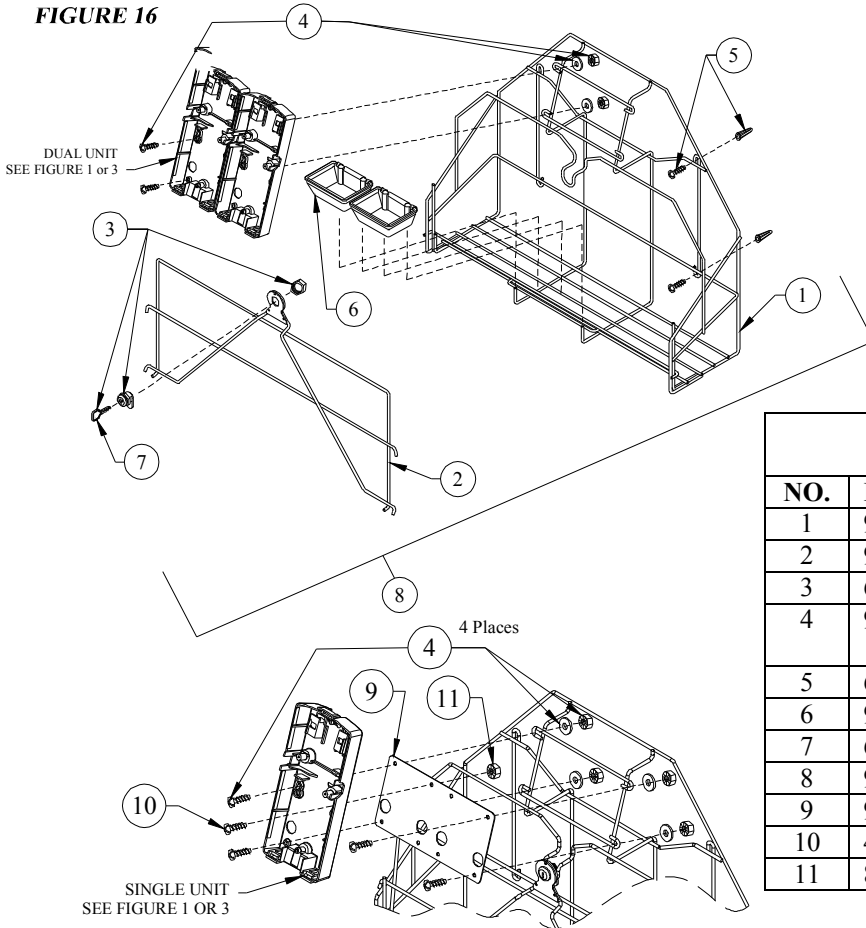


SINGLE UNIT
SEE FIGURE 1 or 3



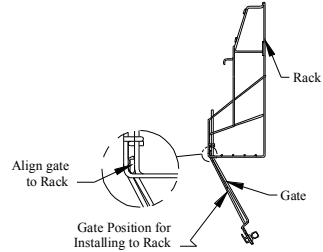
DUAL UNIT
SEE FIGURE 1 OR 3

FIGURE 16



DUAL UNIT
SEE FIGURE 1 or 3

SINGLE UNIT
SEE FIGURE 1 OR 3



GATE INSTALLATION DETAIL

FIGURE 16: MULTIPRODUCT RACK ASSEMBLY AND DRIP TRAY

NO.	PART NO.	DESCRIPTION
1	98-107-1	Multiproduct Rack
2	98-106-1	Multiproduct Gate
3	66-21	Cabinet Lock w/Key
4	98-103-1	#10 Screw, Washer & Nut Kit (Qty. 4 Each/Set)
5	66-127	#12 Screw & Anchor Kit (Qty. 4 Each/Set)
6	98-104-1	Drip Tray
7	66-21K	Key Only
8	98-113-1	Multiproduct Rack/1 Drip Tray Kit
9	98-90-1	Plate
10	44-124-3	#10 Screw
11	81-67-2	#10 Shakeproof Nut