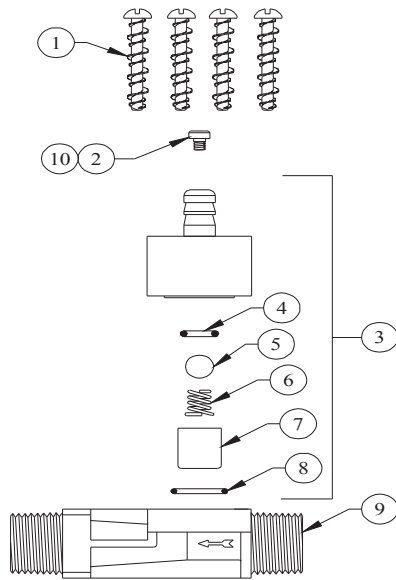


DEMA[®] MODEL 901-693T-CH FOAM STATION II

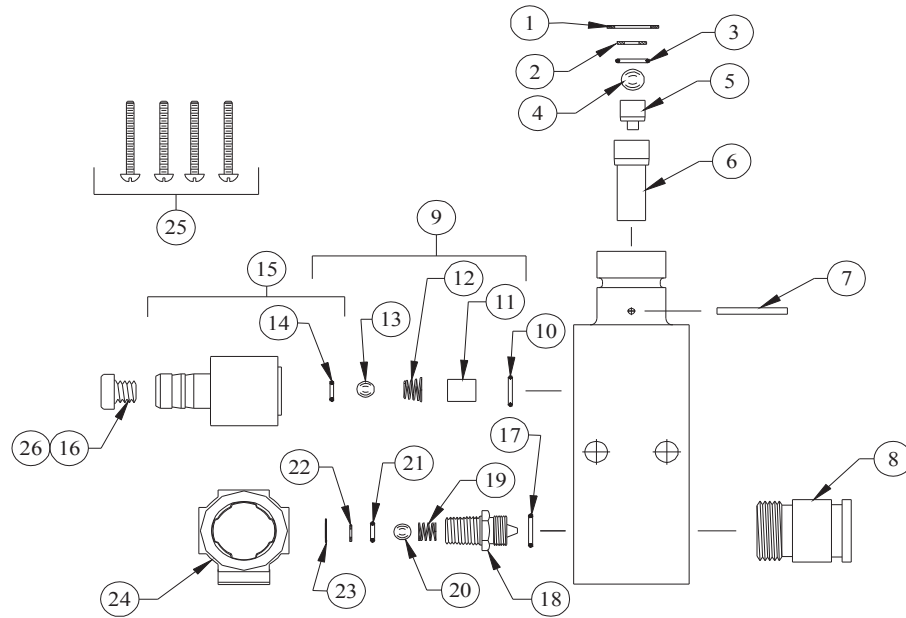
BREAKDOWN OF P203CTC INJECTOR



NO.	PART NO.	DESCRIPTION
1	24-67	Screw (Req'd 4)
2	100-15-	Metering Tip (Specify Color)
3	24-62-SP	Metering Knob Kit
4	24-25S	O-Ring - Silicone
5	24-24P	Check Valve Ball
6	24-23-2	Check Valve Spring - Hasteloy
7	24-34-7	Check Valve Core
8	25-29S	O-Ring - Silicone
9	24-68	Injector Body

ACCESSORIES		
NO.	PART NO.	DESCRIPTION
10	100-15K	Metering Tip Kit

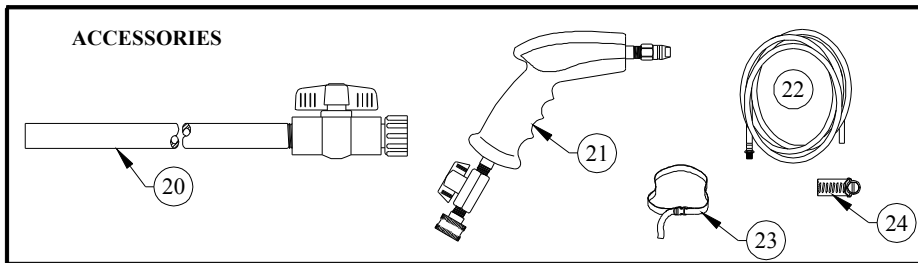
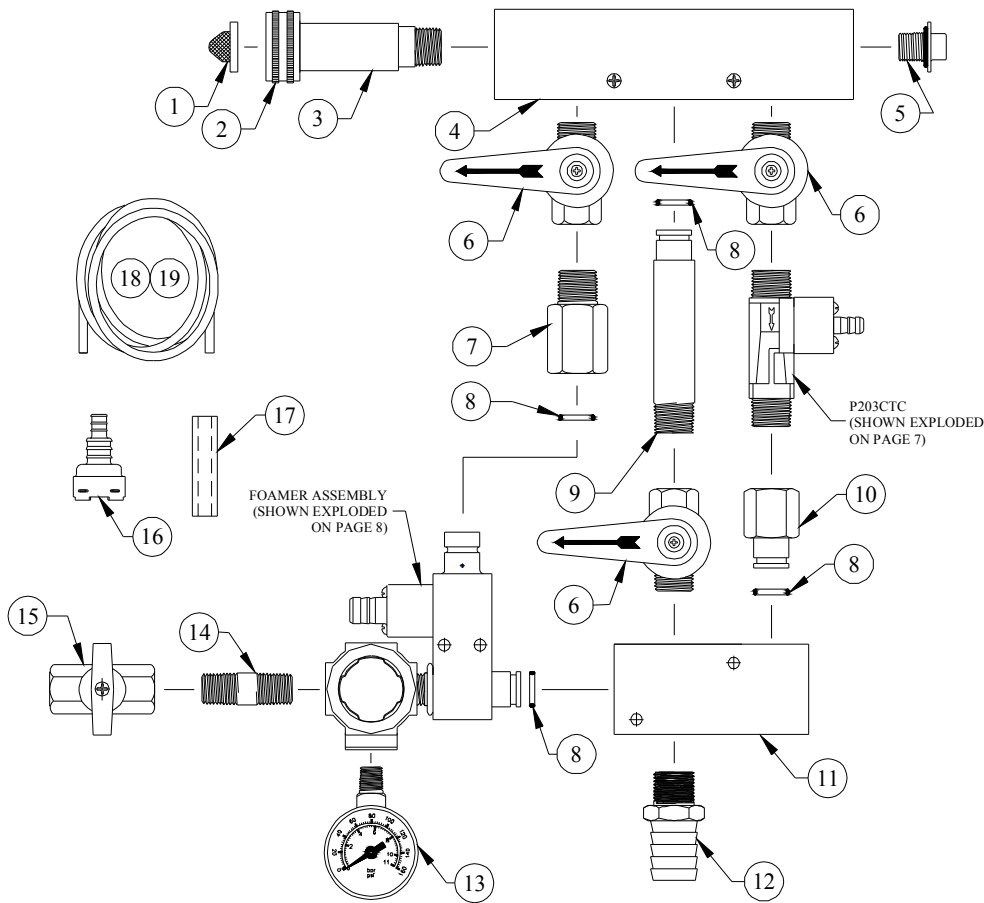
BREAKDOWN OF FOAMING INJECTOR



NO.	PART NO.	DESCRIPTION	NO.	PART NO.	DESCRIPTION
1	29-18-4	7/16 Internal Snap Ring	16	61-9-	Metering Tip (Specify Color)
2	29-17-2	Washer (S.S.) - Air Nozzle	17	30-5V-14	O-Ring - Viton
3	29-7	O-Ring	18	29-14	Air Nozzle
4	29-5P	Ball 1 1/32" Dia. - Teflon	19	93-6-2	Air Check Valve Spring - Hasteloy
5	29-16	Nozzle	20	26-49P	Ball 3/16" - Teflon
6	29-11	Diffuser	21	90-35V	Air Check Valve O-Ring - Viton
7	29-15-2	Pin	22	29-17-3	Washer (S.S.) - Foamer Inlet
8	69-3	Adapter	23	29-18-2	5/16 Internal Snap Ring
9	29-12	Check Valve Repair Kit	24	93-1	Pressure Regulator
10	25-29V	Metering Knob O-Ring - Viton	25	29-10	HI-LO Screw (4 Req'd)
11	23-34-3	Check Valve Core			
12	23-9-2	Check Valve Spring - Hasteloy			
13	23-10	Ball (9/32 Diameter) - Stainless Steel			
14	23-11V	Check Valve O-Ring - Viton			
15	23-32T	Metering Knob			

ACCESSORIES		
NO.	PART NO.	DESCRIPTION
26	61-9K	Metering Tip Kit

DEMA[®] MODEL 901-693T-CH FOAM STATION II



NO	PART NO.	DESCRIPTION
1.	100-38	Strainer Washer
2.	65-10-2	Swivel Coupling
3.	65-14-2	Hose Fitting – Medium Long
4.	69-8-1	Top Manifold
5.	66-153	Pipe Plug & O-Ring Assy.
6.	99-8-1	Valve
7.	69-2	Adapter
8.	30-5-14	O-Ring - EP
9.	58-83-1	Pipe Adapter (3/8")
10.	69-9-1	Adapter
11.	69-4	Bottom Manifold
12.	65-19-1	Hose Adapter
13.	93-15-2	Pressure Gauge
14.	25-137-12	1/4" NPT Nipple X 1 1/2" Lg.
15.	16-11	1/4" NPT Ball Valve

NO	PART NO.	DESCRIPTION
16.	100-16E	Foot Valve
17.	61-107-2	Ceramic Weight
18.	100-12	1/4" ID X 8' Vinyl Tubing (for 66-151GAP-2CS)
19.	66-28	1/4" ID X 21" Vinyl Tubing (for 662-639GAP-2CS)

ACCESSORIES		
NO	PART NO.	DESCRIPTION
20.	93-18QD	Foam Wand Assembly
21.	40-14QD-3	Spray Gun Assembly
22.	44-6N-31-1	Braided Hose 30 Ft.
23.	901-1-1	Strap
24.	73-2-13	Hose Clamp

*Quantities are 1 Each unless noted