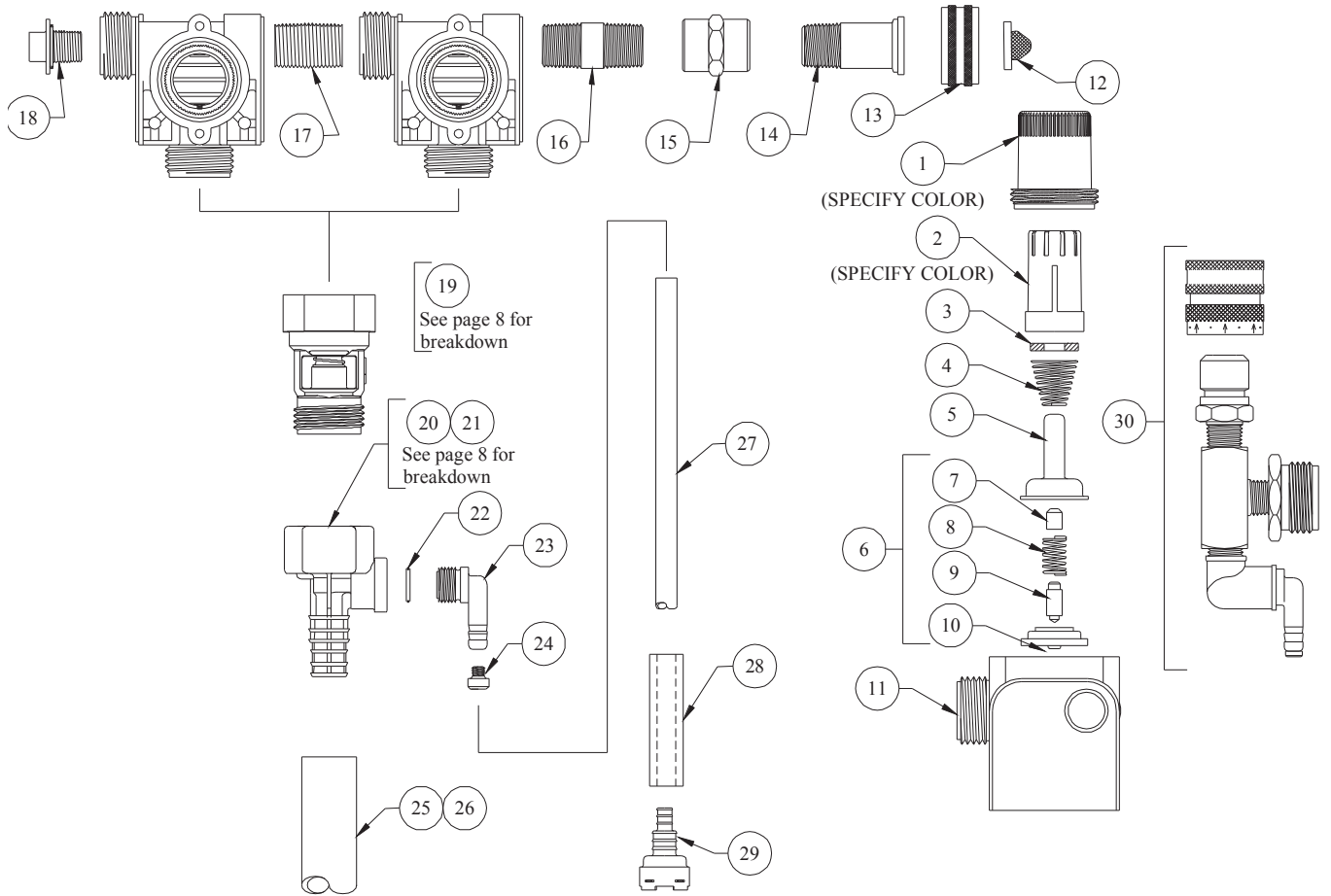


DEMA BLEND CENTERS MODEL 681GAP-2P



NO.	PART NO.	DESCRIPTION
1	66-139	Magnet Housing (Specify Color)
2	66-140	Push Button (Specify Color)
3	63-35	Magnet
4	63-36	Spring
5	41-7-25	Enclosing Tube
6	63-87	Valve Repair Kit
7	63-37	Spacer
8	41-1-8	Kick-off Spring
9	63-38	Plunger
10	41-15-5	Diaphragm
11	63-39	Valve Body
12	100-38	Strainer Washer
13	65-10-2	Adapter
14	65-100-2	Coupling
15	63-57	3/8" Coupling
16	99-5-1	3/8" Nipple x 1 1/2" Lg.
17	66-31	Close Nipple
18	66-153	Pipe Plug & O-Ring Assy.

NO.	PART NO.	DESCRIPTION
19	16-30	Action Gap Assembly
20	61-99GAP-2	1 GPM (1/4" Barb) Proportioner (green)
21	61-22GAP-2	4 GPM (1/4" Barb) Proportioner (Gray)
22	63-78	O-Ring
23	63-79	Inlet Barb (1/4")
24	100-15K	Metering Tip Kit-14 Sizes (For 1/4" Barb)
25	16-3-6	1/2" id x 6" Lg. Vinyl Outlet Tube (1GPM)
26	61-21	1/2" id x 6" Lg. Vinyl Outlet Tube (4GPM)
27	100-12	1/4" id x 8" Lg. Vinyl Supply Tubing
28	61-107-2	Ceramic Weight
29*	100-16E-1	Foot Valve

ACCESSORIES

NO.	PART NO.	DESCRIPTION
30	68-6-QD2	Pressure Indicating Tee

*Foot Valve also available with silicone (100-16S-1) or Viton (100-16V-1) rubber seals. Please specify when ordering.