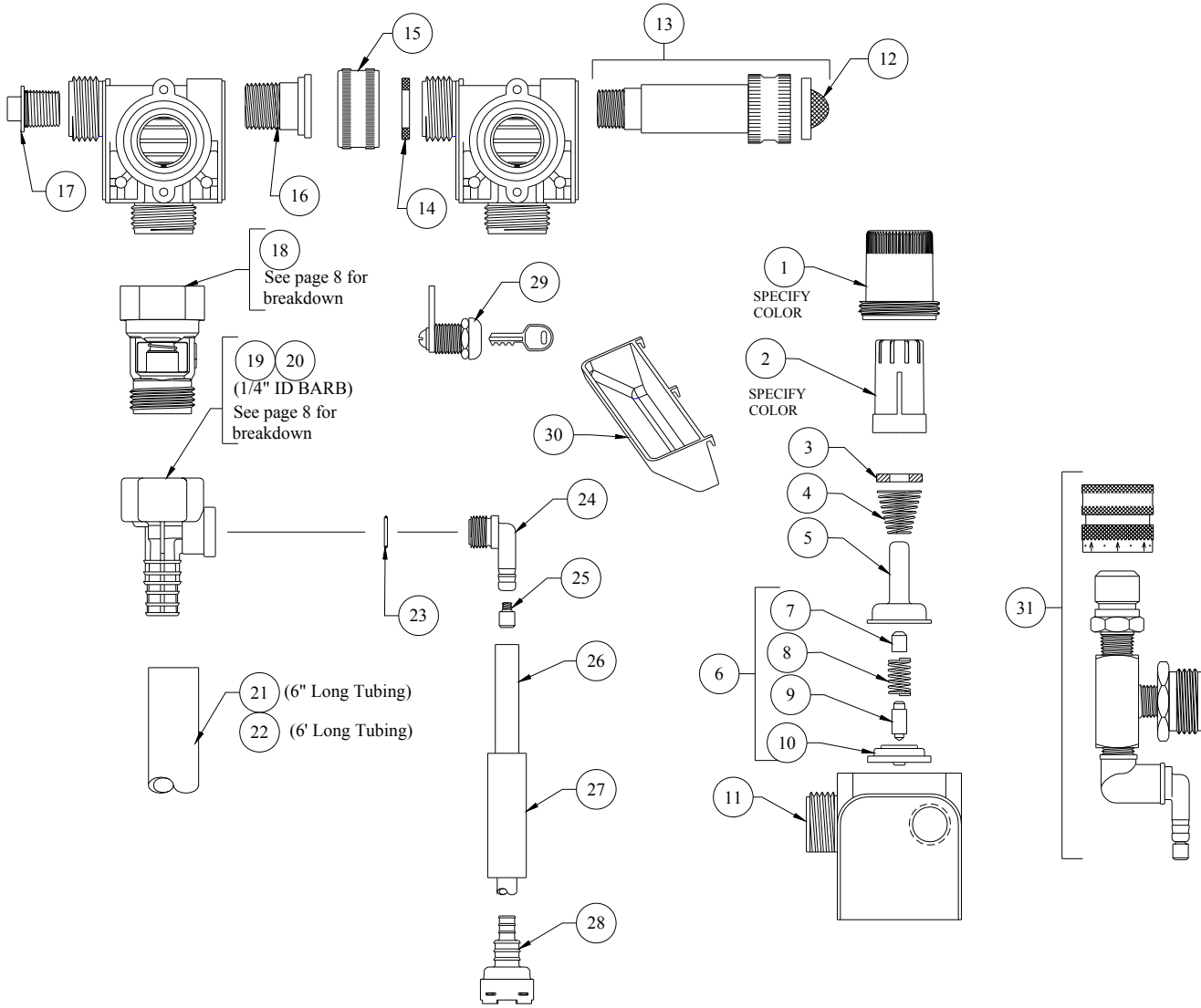


# DEMA BLEND SAFE MODEL 662-GAPDB



QTY.	PART NO.	DESCRIPTION
1	66-139	Magnet Housing (Specify Color)
2	66-140	Push Button (Specify Color)
3	63-35	Magnet
4	63-36	Spring
5	41-7-25	Enclosing Tube
6	63-87	Valve Repair Kit
7	63-37	Spacer
8	41-1-8	Kick-off spring
9	63-38	Plunger
10	41-15-5	Diaphragm
11	63-39	Valve Body
12	100-38	Strainer Washer
13	63-32-2	Water Inlet Adapter Kit
14	150-6	Rubber Washer
15	65-10	Garden Hose Thread Coupling
16	99-7-1	Hose Fitting Stem
17	66-153	Pipe Plug & O-Ring Assy.
18	16-30	Action Gap Assembly
19	61-22GAP-2	4 GPM (1/4" ID Barb) Proportioner (Gray)
20	61-99GAP-2	1 GPM (1/4" ID Barb) Proportioner (Green)

QTY.	PART NO.	DESCRIPTION
21	16-3-6	1/2" I.D. X 6" Lg. Vinyl Outlet Tube (1 GPM Only)
22	61-21	1/2" ID X 6' Lg. Vinyl Outlet Tube (4 GPM Only)
23	63-78	O-Ring
24	63-79	Inlet Barb (1/4" ID Barb)
25	100-15K	Metering Tip Kit-14 Sizes
26	100-12-16	1/4" ID X 28" Lg. Vinyl Supply Tubing
27	61-107-2	Ceramic Weight
28*	100-16E-10	Foot Valve
29	66-21	Cabinet Lock
30	66-64	Drip Tray

### ACCESSORIES

QTY.	PART NO.	DESCRIPTION
31	68-6-QD2	Pressure Indicating Tee

\*Foot Valve also available with silicone (100-16S-) or Viton (100-16V-) rubber seals. Please specify material when ordering.