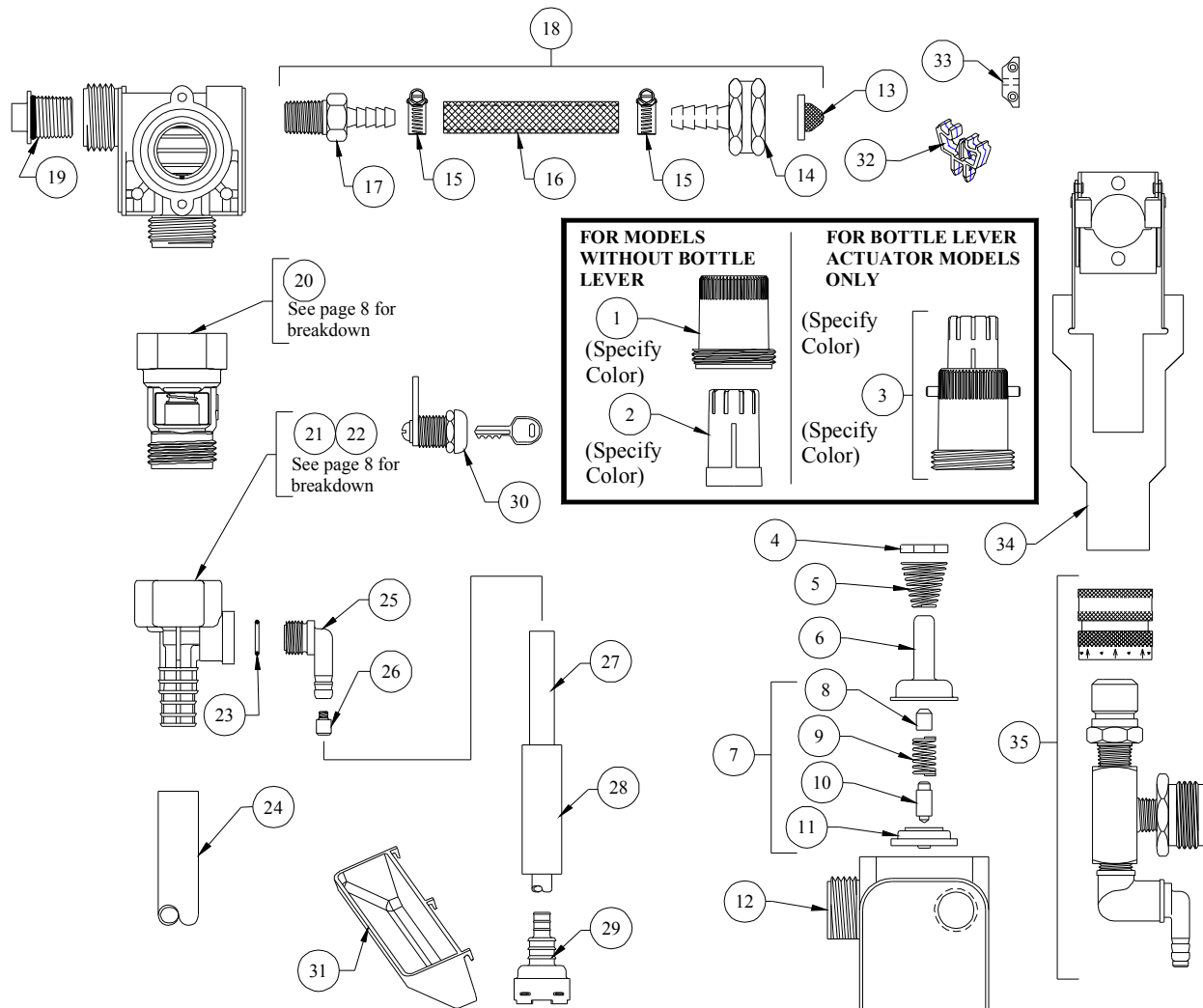


DEMA BLEND SAFES

MODELS 662-GAP & 662-GAP-10H (ONE HAND FILL)



QTY.	PART NO.	DESCRIPTION
1	66-139	Magnet Housing (Specify Color)
2	66-140	Push Button (Specify Color)
3	66-333-OH	Push Button Kit
4	63-35	Magnet
5	63-36	Spring
6	41-7-25	Enclosing Tube
7	63-87	Valve Repair Kit
8	63-37	Spacer
9	41-1-8	Kick-off spring
10	63-38	Plunger
11	41-15-5	Diaphragm
12	63-39	Valve Body
13	100-38	Strainer Washer
14	66-142	Garden Hose/Adapter Barb
15	76-2-3	Hose Clamp
16	66-98-4	3/8" Braided Tubing
17	66-119	Hose Barb
18	66-156	Water Inlet Assembly

QTY.	PART NO.	DESCRIPTION
19	66-153	Pipe Plug & O-Ring Assy.
20	16-30	Action Gap Assembly
21	61-22GAP-2	4 GPM (1/4" Barb) Proportioner (Gray)
22	61-99GAP-2	1 GPM (1/4" Barb) Proportioner (Green)
23	63-78	O-Ring
24	16-3-6	1/2" ID X 6' Lg. Vinyl Outlet Tube (4 GPM Only)
25	63-79	Inlet Barb (1/4" Barb)
26	100-15K	Metering Tip Kit-14 Sizes
27	100-12-16	1/4" ID X 28" Lg. Vinyl Supply Tubing
28	61-107-2	Ceramic Weight
29*	100-16E-10	Foot Valve
30	66-21	Cabinet Lock
31	66-64	Drip Tray
32	67-4-1	Box Clip
33	66-165	Box Hinge (For the Bottom Box Only) (2 Each)
34	63-159	Bottle Lever (OH Models Only)

ACCESSORIES		
QTY.	PART NO.	DESCRIPTION
35	68-6-QD2	Pressure Indicating Tee

*Foot Valve also available with silicone (100-16S-10) or Viton (100-16V-10) rubber seals. Please specify material when ordering.