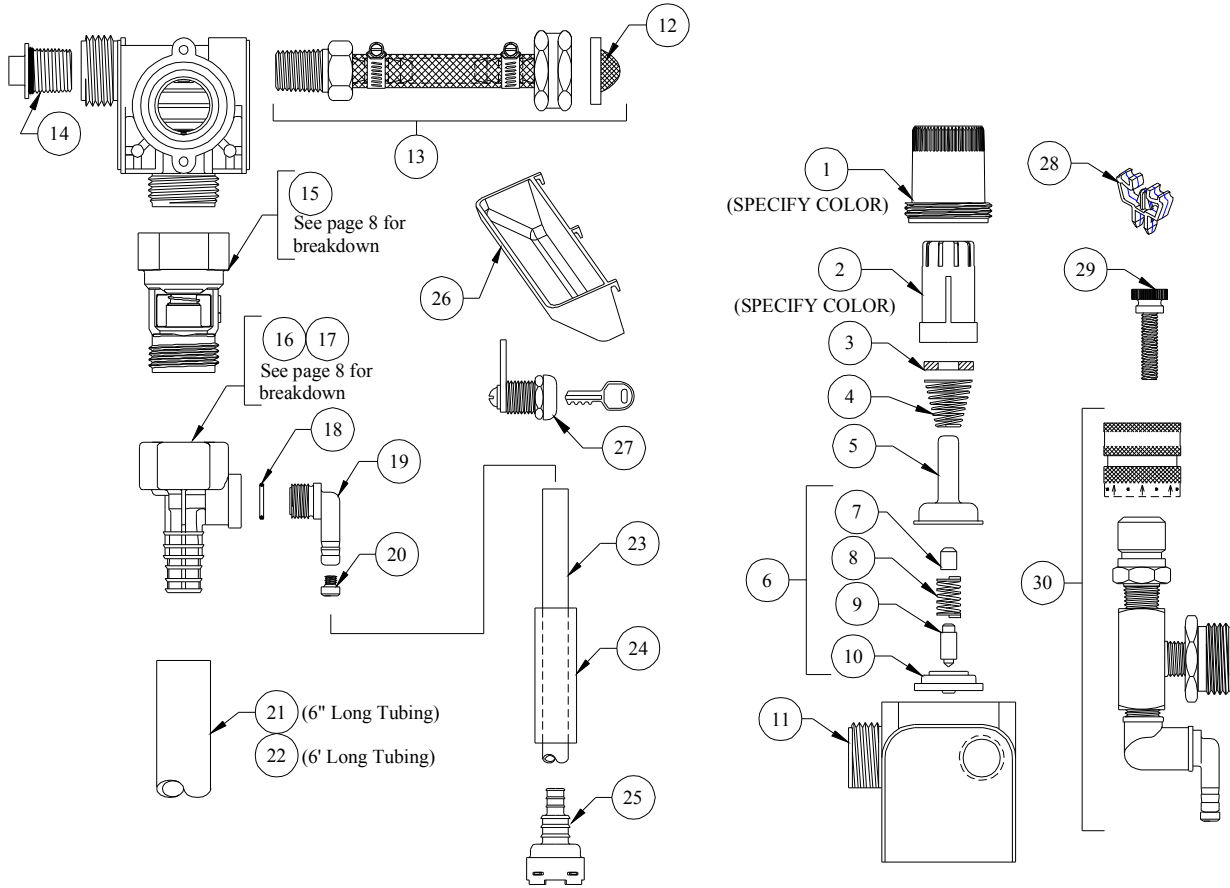


DEMA BLEND SAFE

MODELS: 662-2GAP, 662-3GAP & 662-4GAP-4



NO.	PART NO.	DESCRIPTION
1	66-139	Magnet Housing (Specify Color)
2	66-140	Push Button (Specify Color)
3	63-35	Magnet
4	63-36	Spring
5	41-7-25	Enclosing Tube
6	63-87	Valve Repair Kit
7	63-37	Spacer
8	41-1-8	Kickoff Spring
9	63-38	Plunger
10	41-15-5	Diaphragm
11	63-39	Valve Body
12	100-38	Strainer Washer
13	66-156	Water Inlet Assembly
14	66-153	Pipe Plug & O-Ring Assembly
15	16-30	Action Gap Assembly

NO.	PART NO.	DESCRIPTION
16	61-22-3	4 GPM (1/4" Barb) Proportioner (Gray)
17	61-99-2	1 GPM (1/4" Barb) Proportioner (Green)
18	63-78	O-Ring
19	63-79	Inlet Barb (1/4" Barb)
20	100-15K	Metering Tip Kit – 14 Sizes
21	16-3-6	1/2" ID x 6" Lg. Outlet Tube (1 GPM)
22	61-21	1/2" ID x 6' Lg. Outlet Tube (4 GPM)
23	100-12-16	1/4" ID x 28" Lg. Vinyl Supply Tube
24	61-107-2	Ceramic Weight
25	100-16E	Foot Valve
26	66-64	Drip Tray
27	66-21	Cabinet Lock
28	67-4-1	Box Clip
29	66-63	Thumb Screw

ACCESSORIES

NO.	PART NO.	DESCRIPTION
30	68-6-QD2	Pressure Indicating Tee