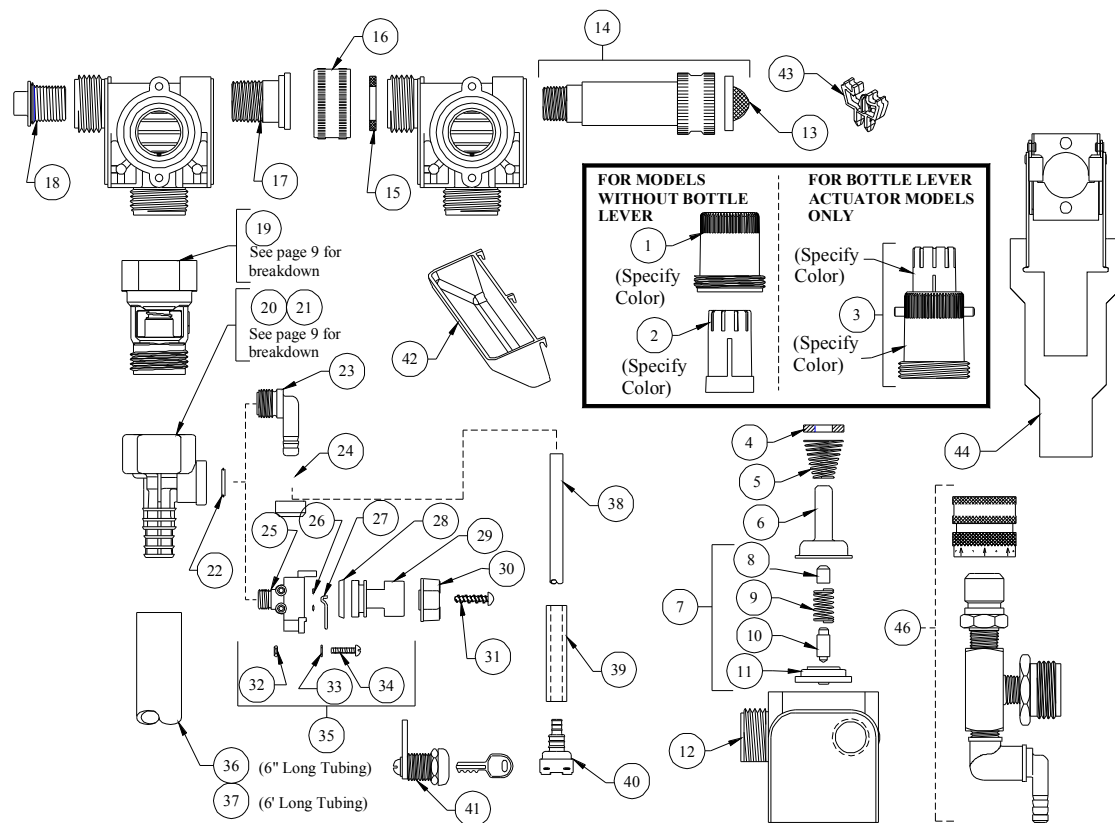


DEMA BLEND SAFE

MODEL: 662-639GAP& 662-639GAP-OH (ONE HAND FILL)



NO.	PART NO.	DESCRIPTION
1	66-199	Magnet Housing (Specify Color)
2	66-140	Push Button (Specify Color)
3	66-333-OH	Push Button Kit (Specify Color)
4	63-35	Magnet
5	63-36	Spring
6	41-7-25	Enclosing Spring
7	63-87	Valve Repair Kit
8	63-37	Spacer
9	41-1-8	Kick-off Spring
10	63-38	Plunger
11	41-15-5	Diaphragm
12	63-39	Valve Body
13	100-38	Strainer Washer
14	63-32-2	Water Inlet Adapter Kit
15	150-6	Rubber Washer
16	65-10	Garden Hose Thread Coupling
17	99-7-1	Hose Fitting Stem
18	66-153	Pipe Plug & O-Ring Assy.
19	16-30	Action Gap Assembly
20	61-22GAP-2	4 GPM (1/4" Barb) Proportioner (Gray)
21	61-99GAP-3	1 GPM Proportioner (Green) Less Inlet Barb
22	63-78	O-Ring
23	63-79	Inlet Barb (1/4" Barb)
24	100-15K	Metering tip Kit (14 Sizes)
25	63-98	Selector Valve Body
26	25-77	O-Ring

NO.	PART NO.	DESCRIPTION
27	63-100	Retaining Spring
28	63-51	"U" Cup
29	63-101-2	Knob
30	63-111-2	Selector Knob
31	58-60	#6 Hi Lo Screw 1/2" Lg.
32	66-13	Nut
33	63-104	Washer
34	63-103	Screw
35	63-96-3	Selector Valve Assembly
36	16-3-6	1/2" ID X 6" Lg. Vinyl Outlet Tube (1GPM Only)
37	61-21	1/2" ID X 6' Lg. Vinyl Outlet Tube (4GPM Only)
38	100-12-13	1/4" ID X 32" Lg. Vinyl Supply Tubing
39	61-107-2	Ceramic Weight
40	100-16E	Foot Valve
41	66-21	Cabinet Lock
42	66-64	Drip Tray
43	67-4-1	Box Clip
44	63-150	Bottle Lever (OH Models Only)

NO.	PART NO.	DESCRIPTION
46	68-6-QD2	Pressure Indicating Tee