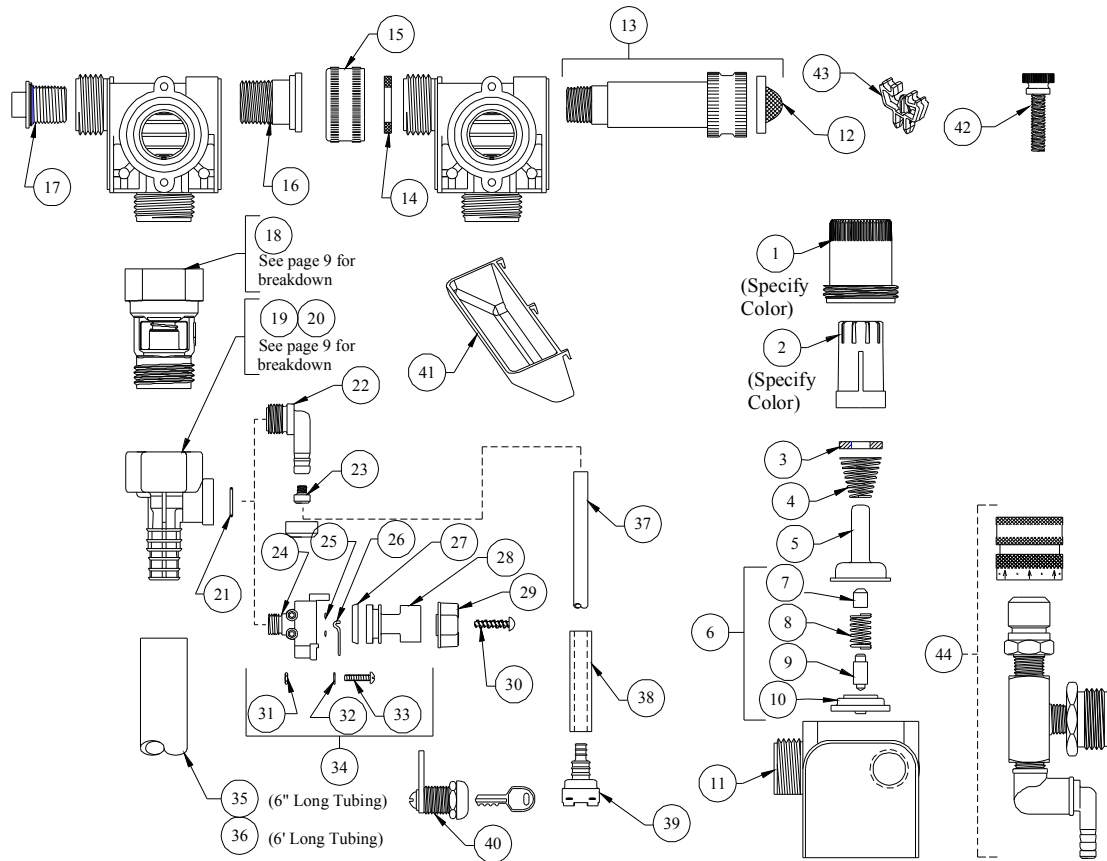


DEMA BLEND SAFE

MODEL: 662-639GAP WITH 66-151GAP-2



NO.	PART NO.	DESCRIPTION
1	66-139	Magnet Housing (Specify Color)
2	66-140	Push Button (Specify Color)
3	63-35	Magnet
4	63-36	Spring
5	41-7-25	Enclosing Tube
6	63-87	Valve Repair Kit
7	63-37	Spacer
8	41-1-8	Kick-off Spring
9	63-38	Plunger
10	41-15-5	Diaphragm
11	63-39	Valve Body
12	100-38	Strainer Washer
13	63-32-2	Water Inlet Adapter Kit
14	150-6	Rubber Washer
15	65-10	Garden Hose Thread Coupling
16	99-7-1	Hose Fitting Stem
17	66-153	Pipe Plug & O-Ring Assy.
18	16-30	Action Gap Assembly
19	61-22GAP-2	4 GPM (1/4" Barb) Proportioner (Gray)
20	61-99GAP-3	1 GPM Proportioner (Green) Less Barb
21	63-78	O-Ring
22	63-79	Inlet Barb (1/4" Barb)
23	100-15K	Metering Tip Kit – 14 Sizes
24	63-98	Selector Valve Body

NO.	PART NO.	DESCRIPTION
25	25-77	O-Ring
26	63-100	Retainer Spring
27	63-51	"U" Cup
28	63-101-2	Knob
29	63-111-2	Selector Knob
30	58-60	#6 Hi Lo Screw 1/2" Lg.
31	66-13	Nut
32	63-104	Washer
33	63-103	Screw
34	63-96-3	Selector Valve Assembly
35	16-3-6	1/2" ID x 6" Lg. Vinyl Outlet Tube (1GPM)
36	61-21	1/2" ID x 6' Lg. Vinyl Outlet Tube (4 GPM)
37	100-12-13	1/4" ID x 32" Lg. Vinyl Supply Tubing
38	61-107-2	Ceramic Weight
39	100-11P	Foot Valve
40	66-21	Cabinet Lock
41	66-64	Drip Tray
42	66-63	Thumbscrew
43	67-4-1	Box Clip

OPTIONAL ACCESSORY		
NO.	PART NO.	DESCRIPTION
44	68-QD2	Pressure Indicating Tee