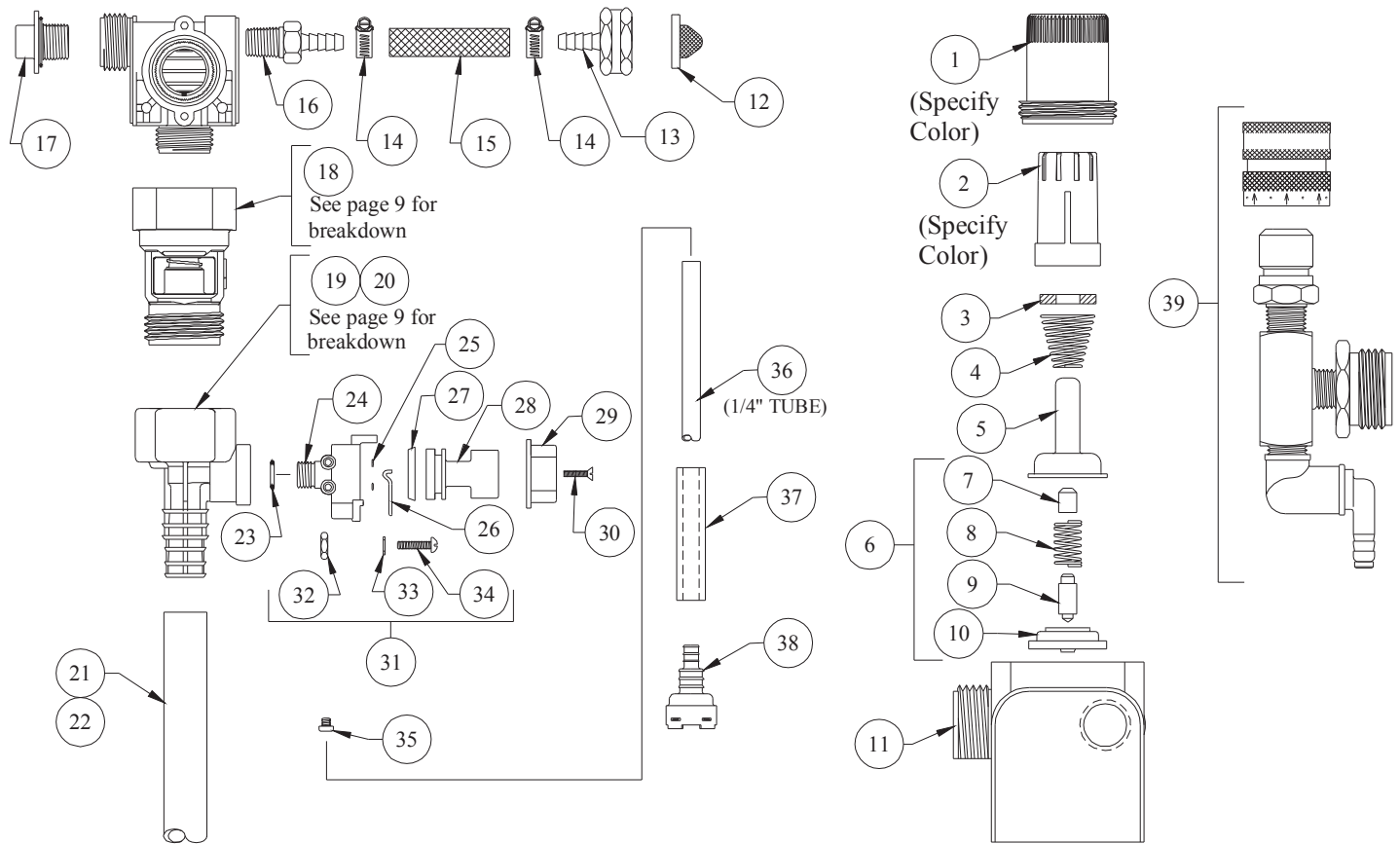


BLEND SAFE

MODELS: 66-149GAP-1 & 66-149GAP-2



NO.	PART NO.	DESCRIPTION
1	66-139	Magnet Housing (Specify Color)
2	66-140	Push Button (Specify Color)
3	63-35	Magnet
4	63-36	Spring
5	41-7-25	Enclosing Tube
6	63-87	Valve Repair Kit
7	63-37	Spacer
8	41-1-8	Kick-off Spring
9	63-38	Plunger
10	41-15-5	Diaphragm (EP)
11	63-39	Valve Body
12	100-38	Strainer Washer
13	66-142	Hose Barb (3/8" Barb X Female G.H. Swivel)
14	76-2-3	Hose Clamp
15	66-98-4	Nylon Braided Tube (3/8" ID X 3" Lg.)
16	66-119	Hose Barb (3/8" Barb X 3/8" MPT)
17	66-153	Pipe Plug & O-Ring Assy.
18	16-30	Action Gap Assembly
19	61-22GAP-3	4 GPM Proportioner (Gray)
20	61-99GAP-3	1 GPM Proportioner (Green)
21	16-3-6	1/2" I.D. X 6" Lg. Vinyl Outlet Tube (1 GPM Only)
22	61-21	1/2" ID X 6' Lg. Vinyl Outlet Tube (4 GPM Only)

NO.	PART NO.	DESCRIPTION
23	63-78	O-Ring (EP)
24	63-98	Selector Valve Body
25	25-77	O-Ring (Silicone)
26	63-100	Retainer Spring
27	63-51	"U" Cup
28	63-101-2	Selector Knob
29	63-111-2	Stamped Selector Knob
30	58-60	#6 Hi Lo Screw 1/2" Lg.
31	63-96-3	Selector Valve Assembly
32	66-13	Nut
33	63-104	Washer
34	63-103	#8-32 Round Head Screw 3/4" Lg.
35	100-15K-1	Metering Tip Kit (14 Sizes)
36	100-12	1/4 ID X 8' Lg. Vinyl Supply Tubing
37	61-107-2	Ceramic Weight
38*	100-16E-1	Foot Valve

ACCESSORIES

QTY.	PART NO.	DESCRIPTION
39	68-6-QD2	Pressure Indicating Tee

*Foot Valve also available with silicone (100-16S-1) or Viton (100-16V-1) rubber seals.
Please specify material when ordering.