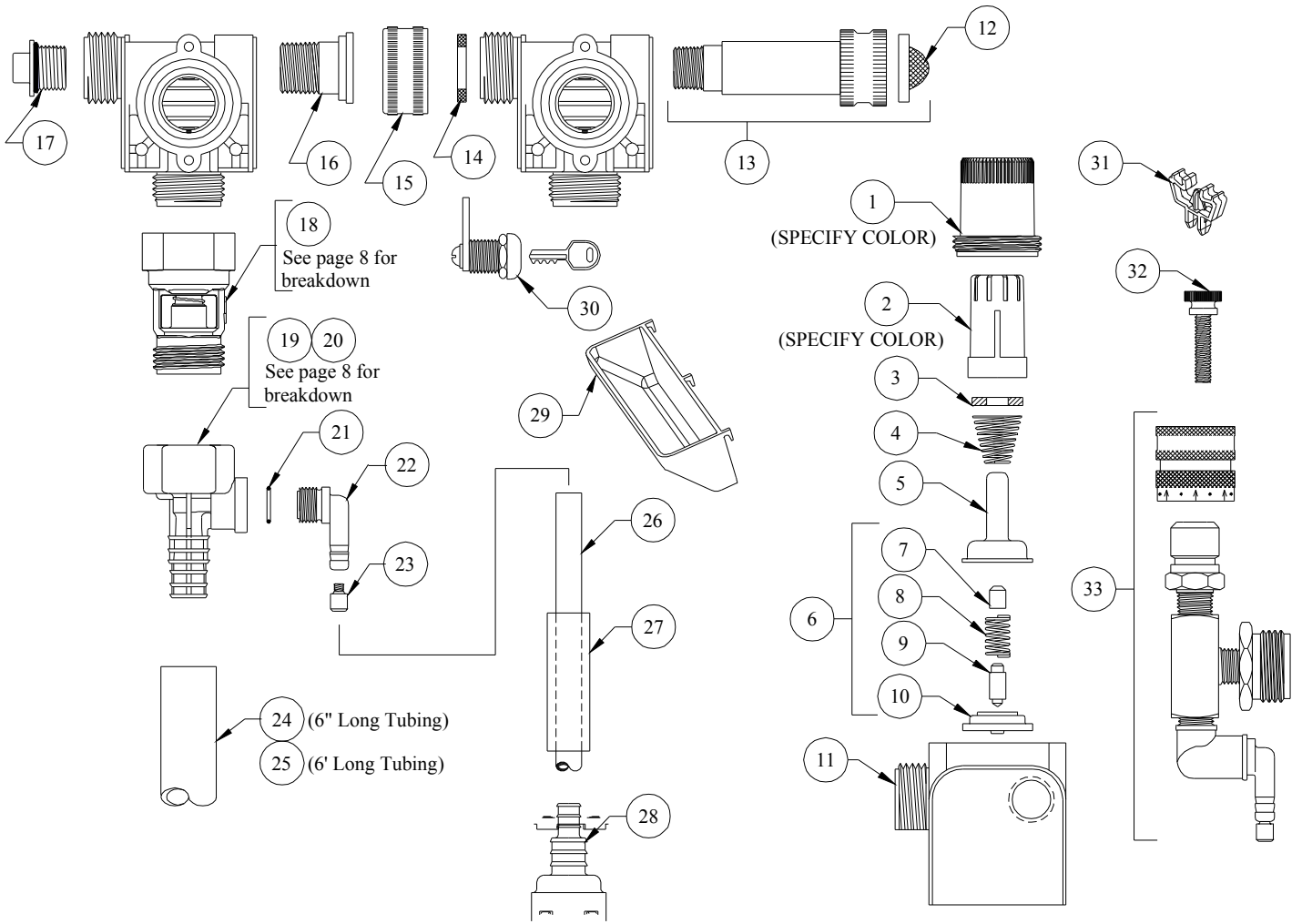


DEMA BLEND SAFE MODEL 662-4GAP-(XXXX)-2



QTY.	PART NO.	DESCRIPTION
1	66-139	Magnet Housing (Specify Color)
2	66-140	Push Button (Specify Color)
3	63-35	Magnet
4	63-36	Spring
5	41-7-25	Enclosing Tube
6	63-87	Valve Repair Kit
7	63-37	Spacer
8	41-1-8	Kick-off spring
9	63-38	Plunger
10	41-15-5	Diaphragm
11	63-39	Valve Body
12	100-38	Strainer Washer
13	63-32-2	Inlet Adapter Kit
14	150-6	Rubber Washer
15	65-10	Garden Hose Thread Coupling
16	99-7-1	Hose Fitting Stem
17	66-153	Pipe Plug & O-Ring Assy.

QTY.	PART NO.	DESCRIPTION
18	16-30	Action Gap Assembly
19	61-99GAP-2	1 GPM (1/4" Barb) Proportioner (Green)
20	61-22GAP-2	4 GPM (1/4" Barb) Proportioner (Gray)
21	63-78	O-Ring
22	63-79	Inlet Barb (1/4" Barb)
23	100-15K	Metering Tip Kit-14 Sizes
24	16-3-6	1/2" I.D. X 6" Lg. Vinyl Outlet Tube (1 GPM Only)
25	61-21	1/2" ID X 6' Lg. Vinyl Outlet Tube (4 GPM Only)
26	100-12-16	1/4" ID X 28" Lg. Vinyl Supply Tubing
27	61-107-2	Ceramic Weight
28	100-16E	Foot Valve
29	66-64	Drip Tray
30	66-21	Cabinet Lock
31	67-4-1	Box Clip
32	66-63	Thumbscrew

ACCESSORIES

QTY.	PART NO.	DESCRIPTION
33	68-6-QD2	PRESSURE INDICATING TEE