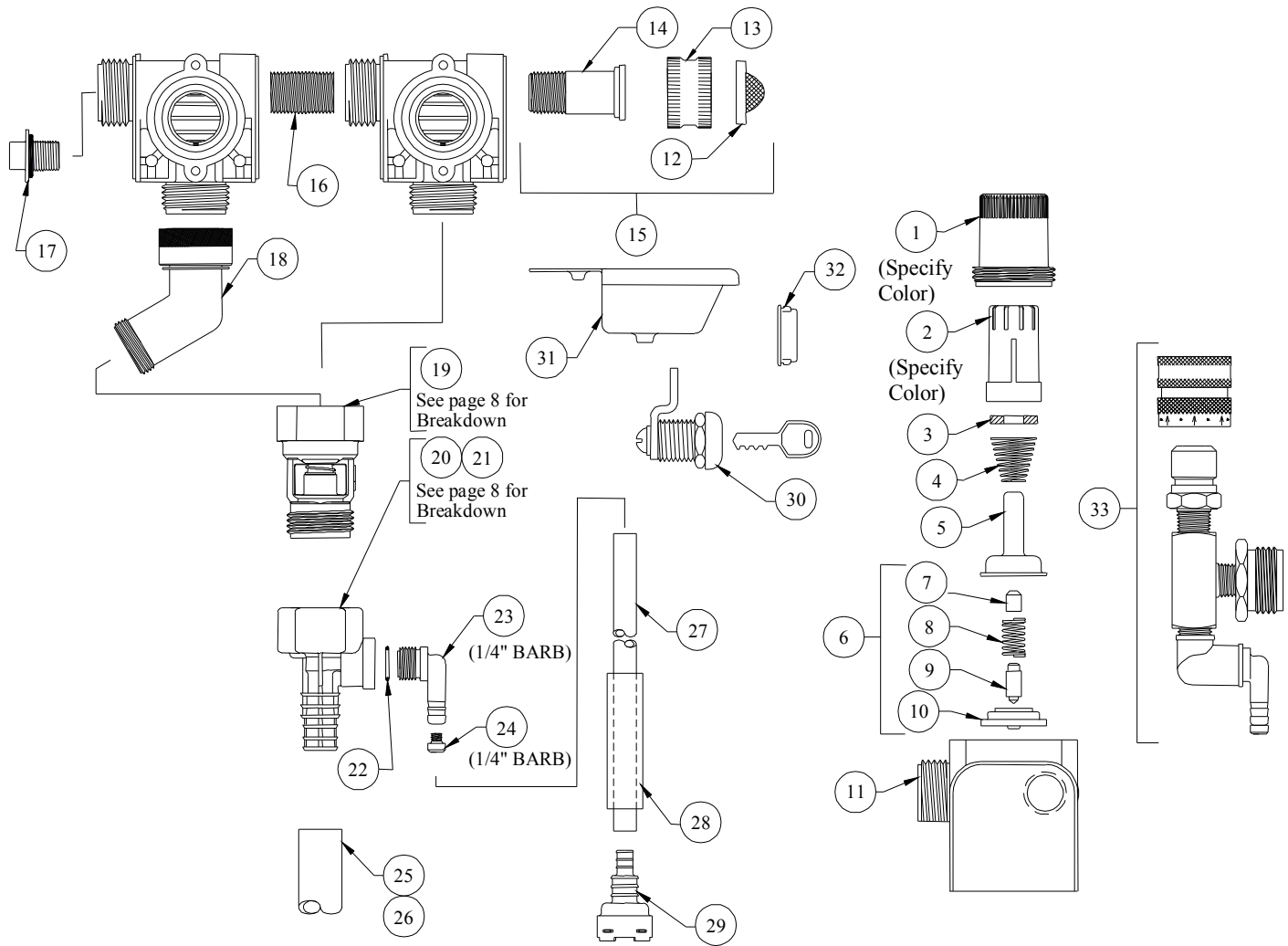


# DEMA BLEND CENTER

## MODEL: 661GAPDB



NO.	PART NO.	DESCRIPTION
1	66-139	Magnet Housing (Specify Color)
2	66-140	Push Button (Specify Color)
3	63-35	Magnet
4	63-36	Spring
5	41-7-25	Enclosing Tube
6	63-87	Valve Repair Kit
7	63-37	Spacer
8	41-1-8	Kick-off Spring
9	63-38	Plunger
10	41-15-10	Diaphragm
11	63-39	Valve Body
12	100-38	Strainer Washer
13	65-10	Garden Hose Thread Coupling
14	65-100-1	Hose Fitting Stem (1.53" Lg.)
15	63-32-1	Inlet Adapter Kit
16	66-31	3/8" Close Nipple
17	66-153	Pipe Plug & O-Ring Assy.

NO.	PART NO.	DESCRIPTION
18	65-16	45° Male X Female 6H Adapter
19	16-30	Action Gap Assembly
20	61-22GAP-2	4 GPM (1/4" Barb) Proportioner (Gray)
21	61-99GAP-2	1 GPM (1/4" Barb) Proportioner (Green)
22	63-78	O-Ring
23	63-79	Inlet Barb (1/4" Barb)
24	100-15K	Metering Tip Kit-14 Sizes
25	16-3-6	1/2" I.D. X 6" Lg. Vinyl Outlet Tube (1 GPM Only)
26	61-21	1/2" ID X 6' Lg. Vinyl Outlet Tube (4 GPM Only)
27	66-28	1/4" ID X 21" Lg. Vinyl Supply Tubing
28	61-107-2	Ceramic Weight
29	100-16E-2	Foot Valve
30	66-21	Cabinet Lock
31	66-23-1	Drip Tray
32	61-71	Snap Bushing

### ACCESSORIES

NO.	PART NO.	DESCRIPTION
33	68-6-QD2	Pressure Indicating Tee