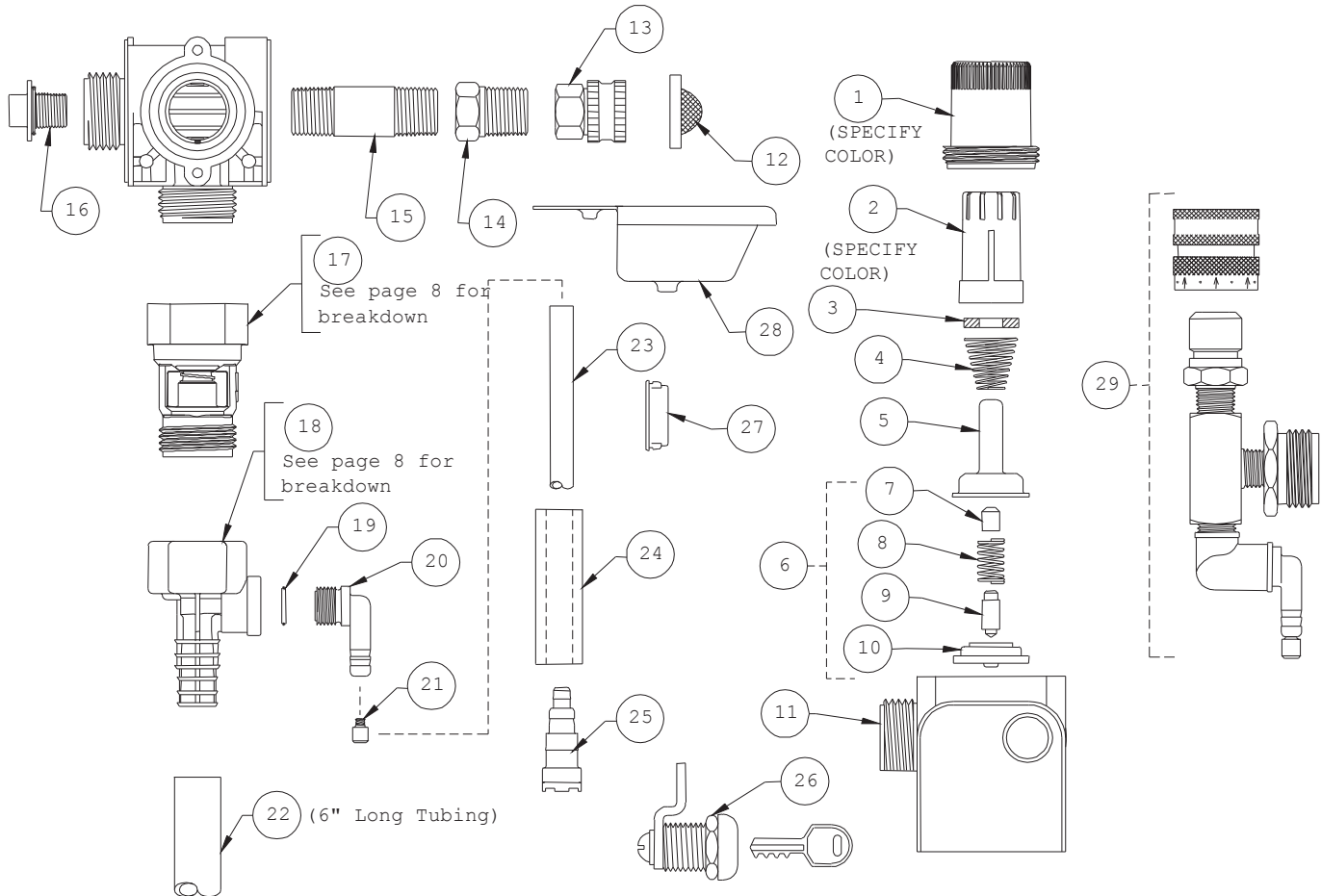


# DEMA BLEND SAFE MODEL: 661GAPB



NO.	PART NO.	DESCRIPTION
1	66-139	Magnet Housing (Specify Color)
2	66-140	Push Button (Specify Color)
3	63-35	Magnet
4	63-36	Spring
5	41-7-25	Enclosing Tube
6	63-87	Valve Repair Kit
7	63-37	Spacer
8	41-1-8	Kick-off spring
9	63-38	Plunger
10	41-15-10	Diaphragm
11	63-39	Valve Body
12	100-38	Strainer Washer
13	93-19	Swivel Adapter 1/2 NPT
14	66-27	Bushing
15	68-8	Pipe Nipple (3/8" NPT X 2" Lg.)
16	66-153	Pipe Plug & O-Ring Assy.
17	16-30	Action Gap Assembly
18	61-99GAP-2	1 GPM (1/4" Barb) Proportioner (Green)

NO.	PART NO.	DESCRIPTION
19	63-78	O-Ring
20	63-79	Inlet Barb (1/4" Barb)
21	100-15K	Metering Tip Kit-14 Sizes
22	16-3-6	1/2" I.D. X 6" Lg. Vinyl Outlet Tube (1 GPM Only)
23	66-28	1/4" ID X 21" Lg. Vinyl Supply Tubing
24	61-107-2	Ceramic Weight
25	100-11P	Foot Valve
26	66-21	Cabinet Lock
27	61-71	Snap Bushing
28	66-23-1	Drip

### ACCESSORIES

NO.	PART NO.	DESCRIPTION
29	68-6-QD2	Pressure Indicating Tee