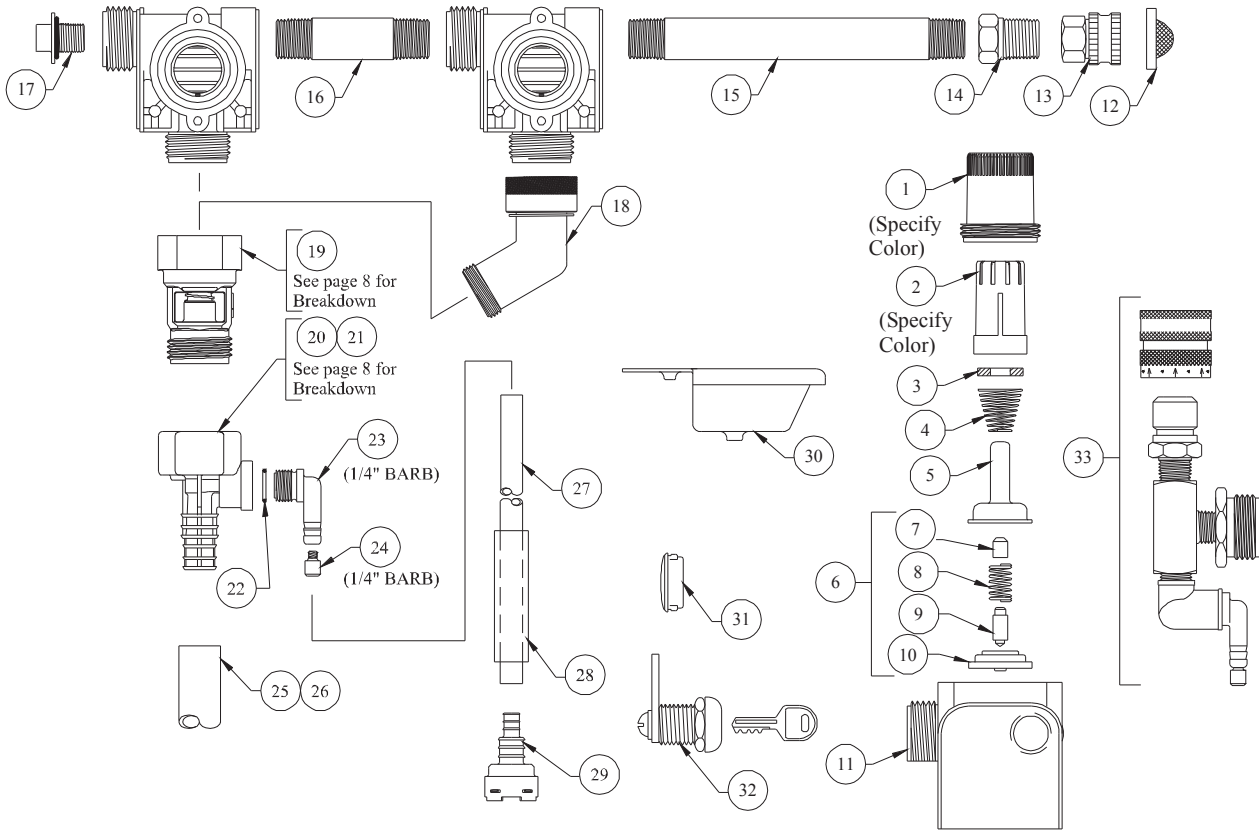


# DEMA 661GAP-4 BLEND SAFE



NO.	PART NO.	DESCRIPTION
1	66-139	Magnet Housing (Specify Color)
2	66-140	Push Button (Specify Color)
3	63-35	Magnet
4	63-36	Spring
5	41-7-25	Enclosing Tube
6	63-87	Valve Repair Kit
7	63-37	Spacer
8	41-1-8	Kick-off Spring
9	63-38	Plunger
10	41-15-10	Diaphragm
11	63-39	Valve Body
12	100-38	Strainer Washer
13	93-19	Swivel Adapter
14	66-27	Bushing 3/8" FPT X 1/2" MPT
15	99-5-11	Pipe Nipple 3/8" NPT X 5 1/2" Lg.
16	99-5-3	Pipe Nipple 3/8" NPT X 2 1/2" Lg.
17	66-153	Pipe Plug & O-Ring Assy.
18	65-16	45° Male X Female GH Adapter (For 4 GPM Prop. Only)
19	16-30	Action Gap Assembly

NO.	PART NO.	DESCRIPTION
20	61-22-3	4 GPM (1/4" Barb) Proportioner (Gray)
21	61-99-2	1 GPM (1/4" Barb) Proportioner (Green)
22	63-78	O-Ring
23	63-79	Inlet Barb (1/4" Barb)
24	100-15K	Metering Tip Kit (14 Sizes)
25	61-21	1/2" ID X 6' Lg. Vinyl Outlet Tube (4 GPM Only)
26	16-3-6	1/2" ID X 6" Lg. Vinyl Outlet Tube (1 GPM Only)
27	66-28	1/4" ID X 21" Lg. Vinyl Supply Tube
28	61-107-2	Ceramic Weight
29*	61-16E	Foot Valve
30	66-23-1	Drip Tray
31	61-71	Snap Bushing
32	66-21	Cabinet Lock

- Foot Valve also available with silicone (100-16S) or Viton 100-16V rubber seals. Please specify material when ordering.

ACCESSORIES		
NO.	PART NO.	DESCRIPTION
33	68-6-QD2	Pressure Indicating Tee