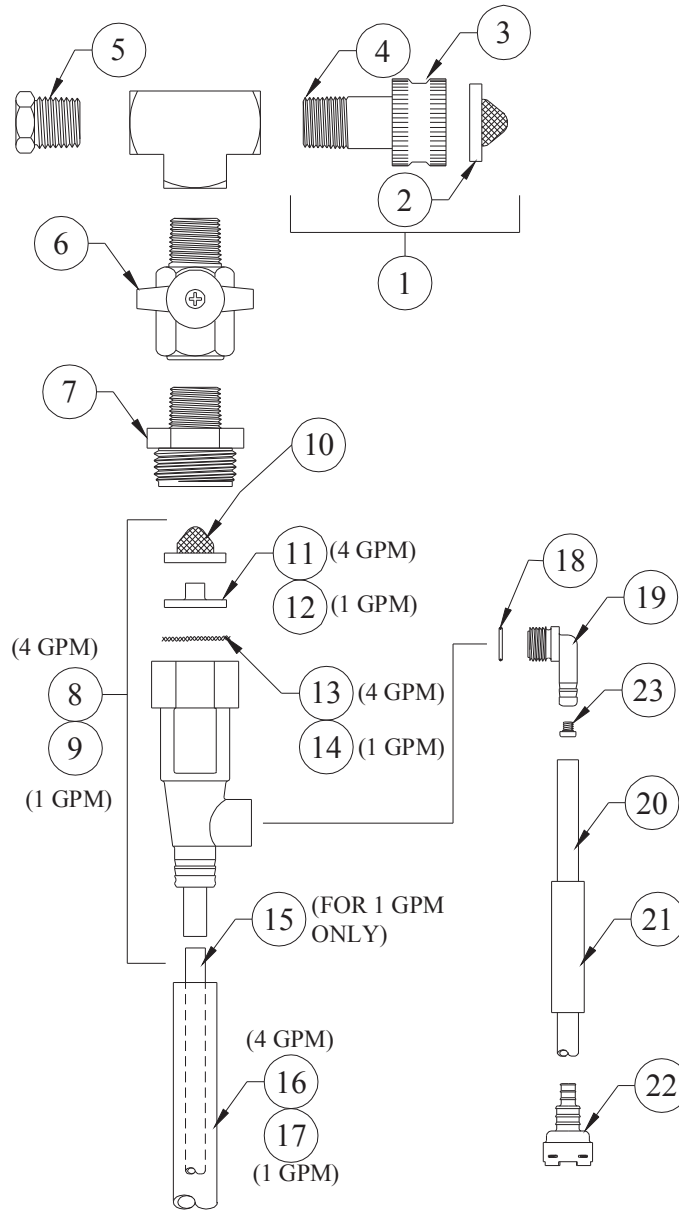


# DEMA 651AG SINGLE-FEED



NO.	PART NO.	DESCRIPTION
1.	65-11	Swivel Adapter Kit
2.	100-38	Strainer Washer
3.	65-10	Hose Coupling
4.	65-9	Garden Hose Adapter Stem
5.	65-6	Plug
6.	65-7	1/4" Ball Valve
7.	65-8	Adapter
8.	61-22BAG	4 GPM Proportioner (1/4" Barb)
9.	61-32BAG	1 GPM Proportioner (1/4" Barb)
10.	100-59	Strainer Washer
11.	63-73	Nozzle (4 GPM)

NO.	PART NO.	DESCRIPTION
12.	63-74-2	Nozzle (1 GPM)
13.	63-76	Screen (4 GPM)
14.	63-77	Screen (1 GPM)
15.	63-82	Vinyl Tube (3/16 I.D. X 7" Lg.)
16.	63-83	Vinyl Tube (9/16 I.D. X 6' Lg.)
17.	63-140	Vinyl Tube' (9/16 I.D. X 4" Lg.)
18.	63-78	O-Ring
19.	63-79	Inlet Barb (1/4" Barb)
20.	100-12	Vinyl Tube (1/4" I.D. X 8' Lg.)
21.	61-107-2	Ceramic Weight (1/4" Tube)
22.*	100-16E-	Foot Valve

## ACCESSORIES

NO.	PART NO.	DESCRIPTION
23.	100-15K	Metering Tip Kit-14 Sizes (1/4" Barb)

\*Foot Valve also available with silicone (100-16S-) or Viton (100-16V-) rubber seals. Please specify material when ordering.