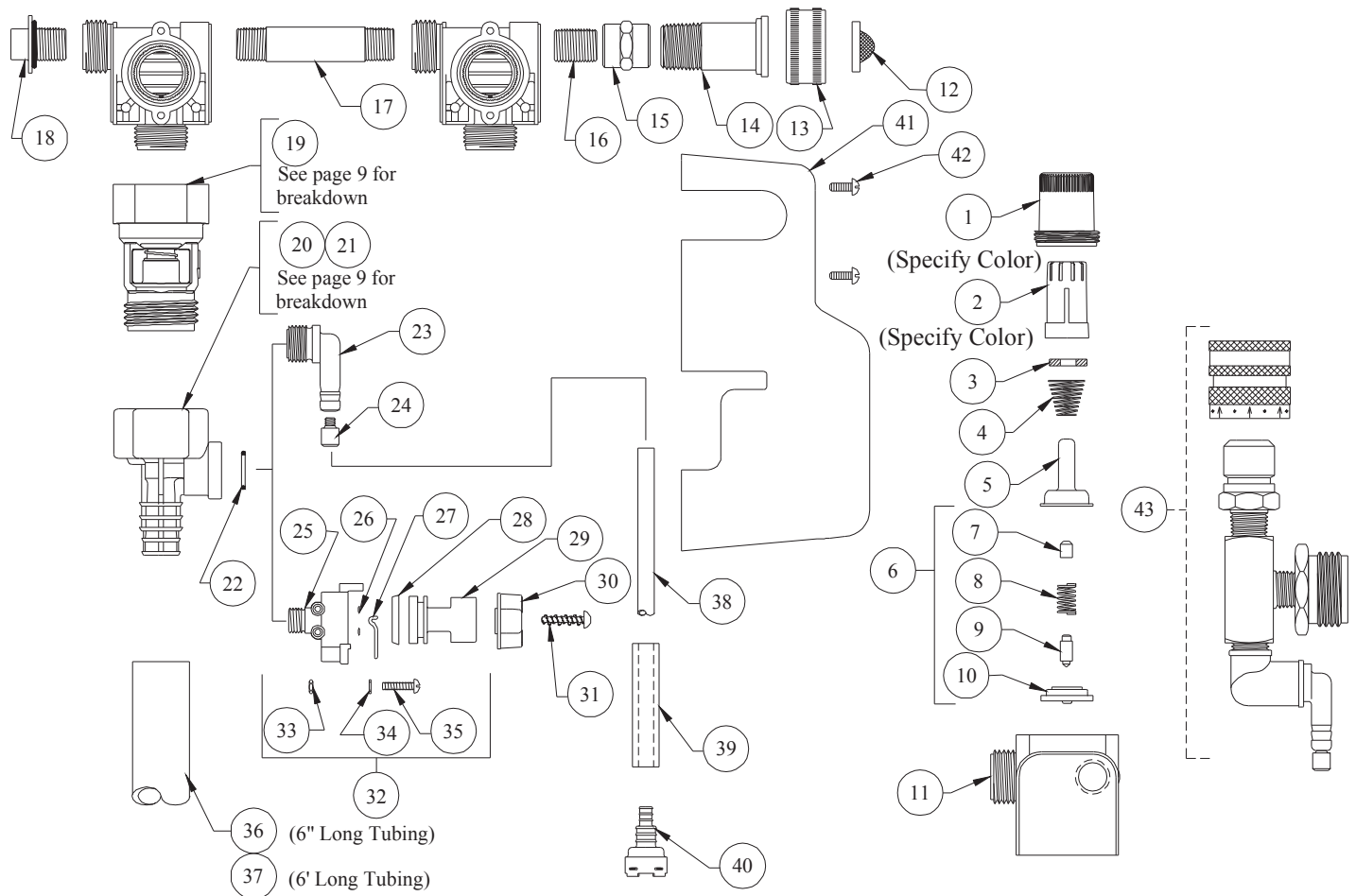


DEMA 639GAP-4-1 and 639GAP-4-4 DIAL-A-BLEND



| QTY. | PART NO. | DESCRIPTION |
|------|------------|--|
| 1 | 66-139 | Magnet Housing (Specify Color) |
| 2 | 66-140 | Push Button (Specify Color) |
| 3 | 63-35 | Magnet |
| 4 | 63-36 | Spring |
| 5 | 41-7-25 | Enclosing Tube |
| 6 | 63-87 | Valve Repair Kit |
| 7 | 63-37 | Spacer |
| 8 | 41-1-8 | Kick-off spring |
| 9 | 63-38 | Plunger |
| 10 | 41-15-5 | Diaphragm |
| 11 | 63-39 | Valve Body |
| 12 | 100-59 | Strainer Washer |
| 13 | 65-10-2 | Coupling |
| 14 | 65-100-2 | Hose Fitting Stem |
| 15 | 63-57 | 3/8" Coupling |
| 16 | 99-5-1 | Hose Fitting Stem |
| 17 | 61-118 | PVC Pipe 2 1/2"Lg. |
| 18 | 66-153 | Pipe Plug & O-Ring Assy. |
| 19 | 16-30 | Action Gap Assembly |
| 20 | 61-22GAP-2 | 4 GPM (1/4" Barb) Proportioner (Gray) |
| 21 | 61-99GAP-3 | 1 GPM Proportioner (Green) Less Inlet Barb |
| 22 | 63-78 | O-Ring |

| QTY. | PART NO. | DESCRIPTION |
|------|----------|---|
| 23 | 63-79 | Inlet Barb (1/4" Barb) |
| 24 | 100-15K | Metering Tip Kit-14 Sizes |
| 25 | 63-98 | Selector Valve Body |
| 26 | 25-77 | O-Ring |
| 27 | 63-100 | Retainer Spring |
| 28 | 63-51 | "U" Cup |
| 29 | 63-101-2 | Knob |
| 30 | 63-111-2 | Selector Knob |
| 31 | 58-60 | #6 Hi Lo Screw 1/2" Lg. |
| 32 | 63-96-3 | Selector Valve Assembly |
| 33 | 66-13 | Nut |
| 34 | 63-104 | Washer |
| 35 | 63-103 | Screw |
| 36 | 16-3-6 | 1/2" I.D. X 6" Lg. Vinyl Outlet Tube (1 GPM Only) |
| 37 | 61-21 | 1/2" ID X 6' Lg. Vinyl Outlet Tube (4 GPM Only) |
| 38 | 100-12 | 1/4" ID X 8' Lg. Vinyl Supply Tubing |
| 39 | 61-107-2 | Ceramic Weight |
| 40* | 100-16E- | Foot Valve |
| 41 | 63-137-3 | Cover |
| 42 | 63-46 | Screw |

ACCESSORIES

| QTY. | PART NO. | DESCRIPTION |
|------|----------|-------------------------|
| 43 | 68-6-QD2 | Pressure Indicating Tee |

*Foot Valve also available with silicone (100-16S-) or Viton (100-16V-) rubber seals. Please specify material when ordering.