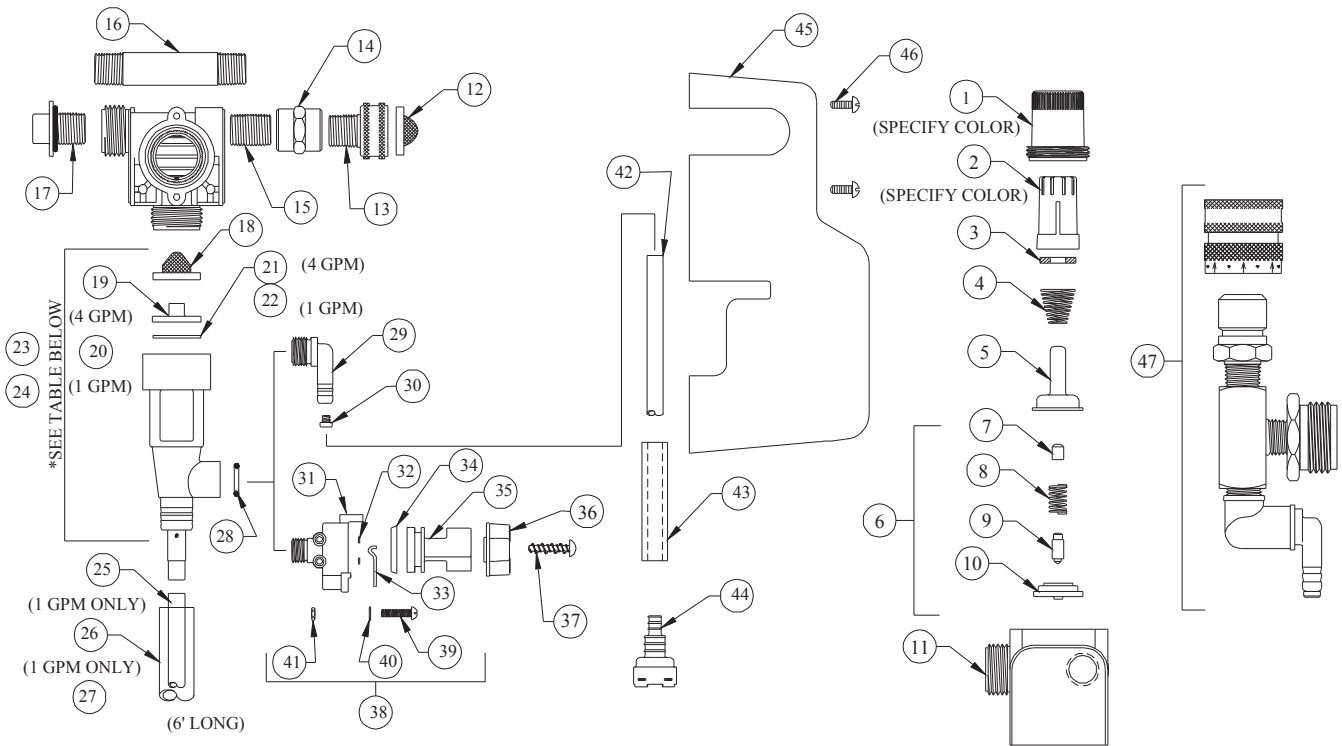


DEMA 639AG-4-1 and 639AG-4-4 DIAL-A-BLEND



NO.	PART NO.	DESCRIPTION
1.	66-139	Magnet Housing (Specify Color)
2.	66-140	Push Button (Specify Color)
3.	63-35	Magnet
4.	63-36	Spring
5.	41-7-25	Enclosing Tube
6.	63-87	Valve Repair Kit
7.	63-37	Spacer, 3/8" Brass
8.	41-1-8	Kick-Off Spring
9.	63-38	Plunger
10.	41-15-5	Diaphragm
11.	63-39	Valve Body
12.	100-38	Inlet Washer Screen
13.	93-44	Pipe to Garden Hose Adapter (3/8" MNPT)
14.	63-57	3/8" Brass Coupling
15.	66-31	3/8" Brass x 1" Pipe Nipple
16.	61-118	3/8" Brass x 2 1/2" Pipe Nipple PVC
17.	66-153	Pipe Plug and O-Ring Assy.
18.	100-59	Strainer Washer
19.	63-73	Nozzle (4 GPM)
20.	63-74-2	Nozzle (1 GPM)
21.	63-76	Screen, SS (4 GPM)
22.	63-77	Screen, SS (1 GPM)
23.	61-126AG-4	*4 GPM Proportioner Assy.
24.	61-126AG-4	*4 GPM Proportioner Assy.
25.	63-82	Vinyl Tube (3/16" ID x 7" Lg) (1 GPM)

NO.	PART NO.	DESCRIPTION
26.	66-113	Vinyl Tube (9/16" ID x 6 1/2" Lg) (4 GPM)
27.	63-83	Vinyl Tube (9/16" ID x 6' Lg)
28.	63-78	O-Ring, EP
29.	63-79	Inlet Barb (1/4" Barb)
30.	100-15	Metering Tip (Specify Size)
31.	63-98	Selector Valve Body
32.	25-77	O-Ring, Silicone
33.	63-100	Retainer Spring
34.	63-51	"U" Cup
35.	63-101-2	Knob
36.	63-111-2	Selector Knob
37.	66-133-2	#6 Fl. Hd. Hi-Lo Screw
38.	63-96-3	Selector Valve Assy.
39.	63-103	#8-32 Round Headed Screw (3/4" Lg.)
40.	63-104	Washer
41.	66-13	Nut
42.	100-12	1/4" ID X 8' Lg. Vinyl Tubing
43.	63-107-2	Ceramic Weight (For 1/4" Tubing)
44.	100-16E	Foot Valve
45.	63-161-1	Cover
46.	63-46	#8 Hi-Lo Screw (1/2" Lg.)

ACCESSORIES

NO.	PART NO.	DESCRIPTION
47.	68-6-QD2	Pressure Indicating Tee
48.	100-15K	Metering Tip Kit