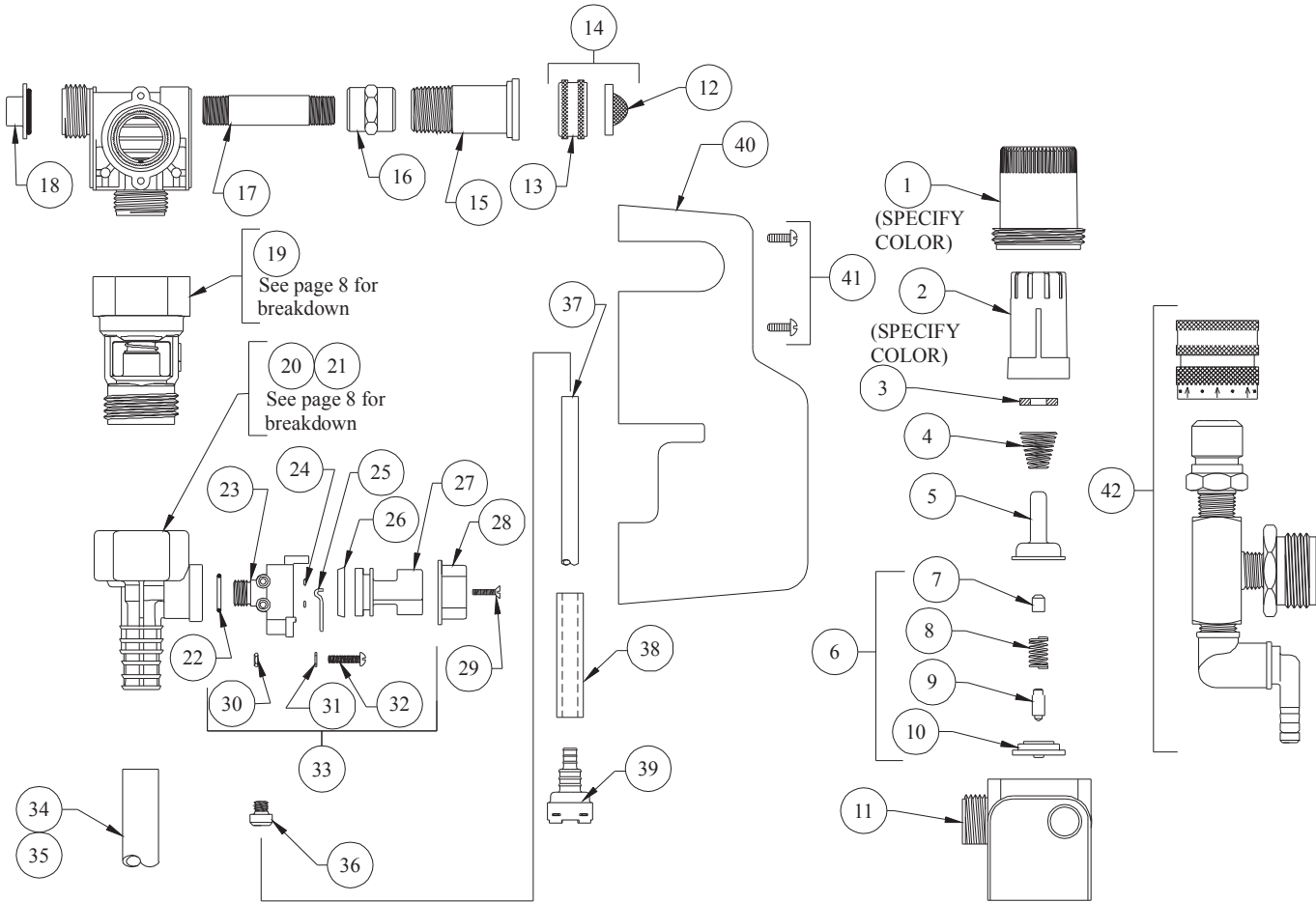


DEMA BLEND CENTER

MODELS: 637GAP-1 and 637GAP-4



NO.	PART NO.	DESCRIPTION
1	66-139	Magnet Housing (Specify Color)
2	66-140	Push Button (Specify Color)
3	63-35	Magnet
4	63-36	Spring
5	41-7-25	Enclosing Tube
6	63-87	Valve Repair Kit
7	63-37	Spacer
8	41-1-8	Kick-off spring
9	63-38	Plunger
10	41-15-5	Diaphragm, EP
11	63-39	Valve Body
12	100-38	Strainer Washer
13	65-10-2	Hose Fitting Coupling
14	93-44	Swivel Coupling (3/8" MNPT X FGHT)
15	150-6	Rubber Washer
16	63-59	Garden Hose Thread Coupling
17	63-151	Pipe Nipple 3"
18	66-153	Pipe Plug & O-Ring Assy.
19	16-30	Action Gap Assembly
20	61-22GAP-3	4 GPM Proportioner (Gray) Less Inlet Barb
21	61-99GAP-3	1 GPM Proportioner (Green) Less Inlet Barb
22	63-78	O-Ring, EP
23	63-98	Selector Valve Body
24	25-77	O-Ring, Silicone
25	63-100	Retainer Spring
26	63-51	"U" Cup

NO.	PART NO.	DESCRIPTION
27	63-101-2	Selector Knob
28	63-111-2	Selector Knob
29	58-60	#6 Hi Lo Screw 1/2" Lg.
30	66-13	Nut
31	63-104	Washer
32	63-103	#8-32 Screw, 3/4" Lg.
33	63-96-3	Selector Valve Assembly
34	100-15K	Metering Tip Kit-14 Sizes
35	16-3-6	1/2" I.D. X 6" Lg. Vinyl Outlet Tube (1 GPM Only)
36	61-21	1/2" ID X 6' Lg. Vinyl Outlet Tube (4 GPM Only)
37	100-12-13	1/4" ID X 32" Lg. Vinyl Supply Tubing
38	61-107-2	Ceramic Weight, 3/8"
39*	100-16E-1	Foot Valve
40	63-137-2	Cover
41	63-46	#8 Hi Lo Cover Screw, 1/2" Lg.

ACCESSORIES

NO.	PART NO.	DESCRIPTION
42	68-6-QD2	Pressure Indicating Tee

*Foot Valve also available with silicone (100-16S-1) or Viton (100-16V-1) rubber seals. Please specify material when ordering.