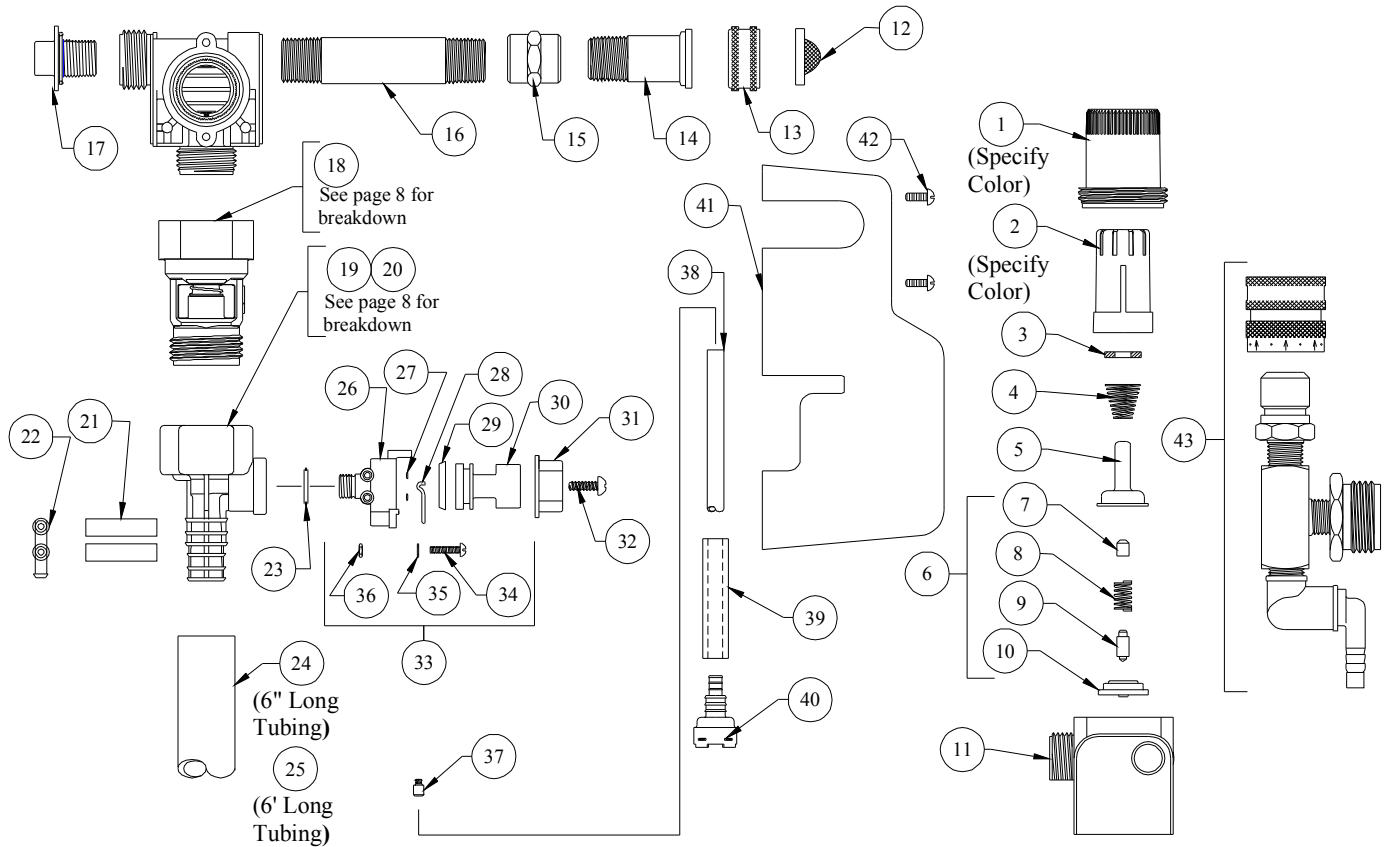


DEMA MULTI-BLEND CENTERS

MODEL: 635GAP-1 & 635GAP-4



QTY.	PART NO.	DESCRIPTION
1	66-139	Magnet Housing (Specify Color)
2	66-140	Push Button (Specify Color)
3	63-35	Magnet
4	63-36	Spring
5	41-7-25	Enclosing Tube
6	63-87	Valve Repair Kit
7	63-37	Spacer
8	41-1-8	Kick-off spring
9	63-38	Plunger
10	41-15-5	Diaphragm
11	63-39	Valve Body
12	100-38	Strainer Washer
13	65-10-2	Hose Fitting Coupling
14	65-100-2	Hose Fitting Stem
15	63-57	3/8" NPT Coupling
16	63-151	Pipe Nipple (3/8" NPT X 3" Long)
17	66-153	Pipe Plug & O-Ring Assy.
18	16-30	Action Gap Assembly
19	61-22GAP-3	4 GPM Proportioner (Gray)
20	61-99GAP-3	1 GPM Proportioner (Green)
21	100-61	Vinyl Tubing (1/4" ID X 4" Lg.)
22	100-60	Barb Connector Tee

QTY.	PART NO.	DESCRIPTION
23	63-78	O-Ring
24	16-3-6	1/2" I.D. X 6" Lg. Vinyl Outlet Tube (1 GPM Only)
25	61-21	1/2" ID X 6' Lg. Vinyl Outlet Tube (4 GPM Only)
26	63-98	Selector Valve Body
27	25-77	O-Ring
28	63-100	Retainer Spring
29	63-51	"U" Cup
30	63-101-2	Selector Knob
31	63-111-2	Knob (Black)
32	58-60	Screw
33	63-96-3	Selector Valve Assembly
34	63-103	Screw
35	63-104	Washer
36	66-13	Nut
37	100-15K-1	Metering Tip Kit (14 Sizes)
38	100-12	1/4" ID X 8' Lg. Vinyl Supply Tubing
39	61-107-2	Ceramic Weight
40*	100-16E-1	Foot Valve (EPDM)
41	63-137-2	Cover
42	63-46	Screw

ACCESSORIES

QTY.	PART NO.	DESCRIPTION
43	68-6-QD2	Pressure Indicating Tee

*Foot Valve also available with silicone (100-16S-1) or Viton (100-16V-1) rubber seals.
Please specify material when ordering.