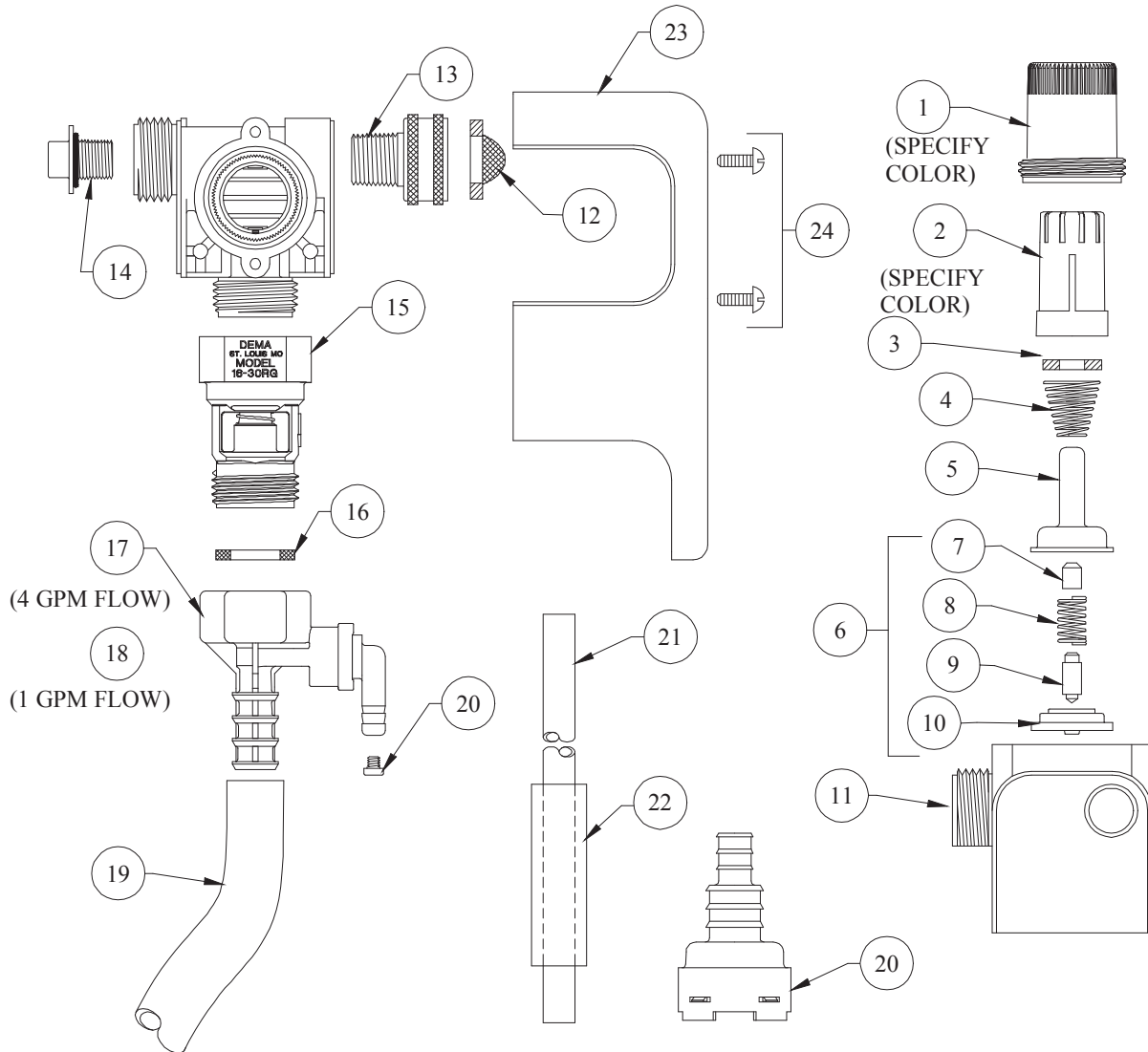


**DEMA BLEND CENTER
MODEL 633□-164B-GAP, 633□-164T-GAP**



NO.	PART NO.	DESCRIPTION
1	66-139	Magnet Housing (Specify Color)
2	66-140	Push Button (Specify Color)
3	63-35	Magnet
4	63-36	Spring
5	41-7-25	Enclosing Tube
6	63-87	Valve Repair Kit
7	63-37	Spacer
8	41-1-8	Kick-off Spring
9	63-38	Plunger
10	41-15-5	Diaphragm
11	63-39	Valve Body
12	100-38	Strainer Washer
13	63-32	Pipe to Garden Hose Adapter
14	66-153	Pipe Plug & O-Ring
15	16-30	Backflow Preventer
16	150-6	Garden Hose Rubber Washer

NO.	PART NO.	DESCRIPTION
17	61-22-3	Proportioner
18	61-32B	1 GPM Proportioner
19	61-21	Vinyl Tube (½" ID X 6' Lg.)
20	100-15K	Metering Tip Kit (14 Sizes)
21	100-12	Vinyl Tube (¼" ID X 8' Lg.)
22	61-107-2	Ceramic Weight
23*	100-16E-1	Foot Valve
24	63-45	Cover
25	63-46	Screw

ACCESSORIES (NOT SHOWN)		
26	61-25-2	Fresh Water Outlet Kit
27	163CB	Medium Capacity Proportioner
28	163CH	High Capacity Proportioner

*Foot Valve also available with silicone (100-16S-1) or Viton (100-16V-1) rubber seals. Please specify material when ordering.