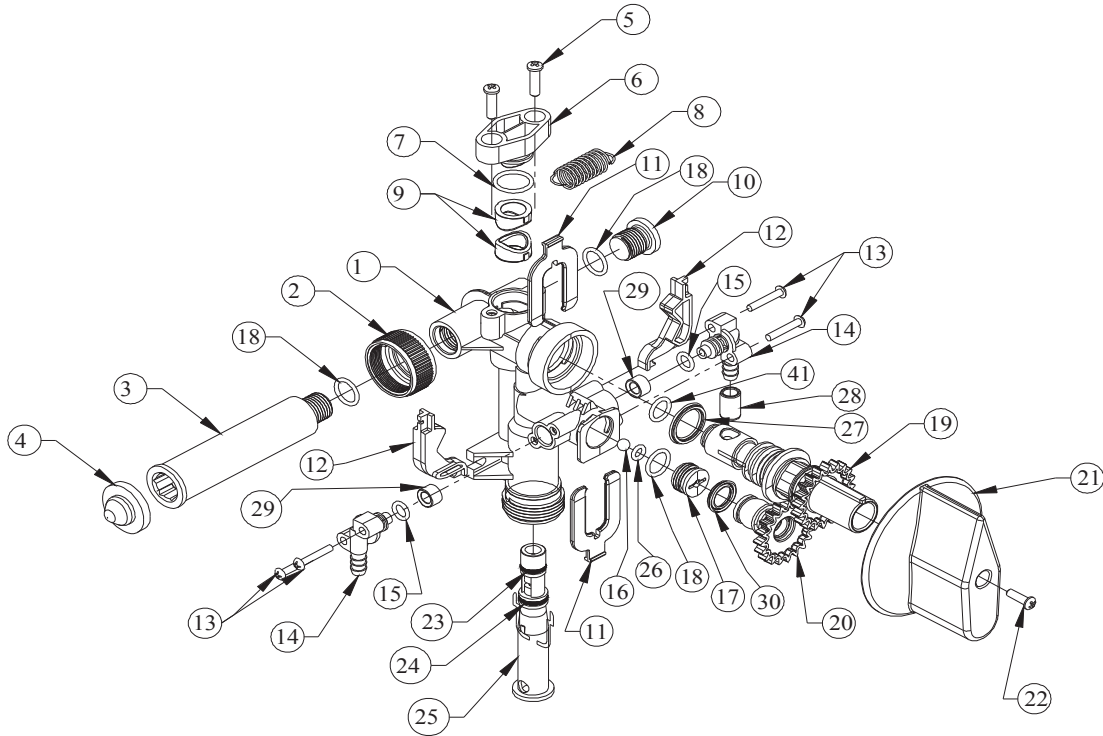


DEMA RAPID FIRE MODELS 6300, 6300-1, 6300-2, 6300-3, 6300-4 & 6300-5



ITEM NO.	QTY	DEMA NO.	DESCRIPTION	MATERIAL
1	1	63-1	Valve Body	POLYPROPYLENE
2	1	65-10	Coupling	BRASS
3	1	66-93	Inlet	BRASS
4	1	100-38	Strainer Washer	VINYL/SS
5	2	44-116-6	#8 HI-LO Screw x 5/8" Lg.	STNLS. STL.
6	1	63-2	Water Seal Retainer	POLYPROPYLENE
7	1	63-8	O-Ring	AFLAS
8	1	63-9	Extension Spring	STNLS. STL.
9	2	66-93-8	Water Seal	AFLAS
10	1	63-11	Plug	POLYPROPYLENE
11	2	63-12	Gear Retainer	POLYPROPYLENE
12	2	63-13	Detent	POLYPROPYLENE
13	4	58-102	#6 HI-LO Screw X 3/4" Lg.	STNLS. STL.
14	2	63-14	Elbow	POLYPROPYLENE
15	2	63-4	O-Ring	AFLAS
16	1	24-24P7	Ball (.2188 dia.)	TEFLON
17	1	63-15	Check Valve Body	POLYPROPYLENE
18	3	63-7	O-Ring	AFLAS
19	1	63-16	Drive Gear	POLYPROPYLENE
20	1	63-17	Driven Gear	POLYPROPYLENE
21	1	63-18	Knob	POLYPROPYLENE
22	1	58-60	#6 HI-LO Screw X 1/2" Lg.	STNLS. STL.
23	1	63-5	O-Ring	AFLAS
24	1	63-6	O-Ring	AFLAS
25	1	20-1-11RF	Injector 2.7 GPM (Color, Gray)	POLYPROPYLENE
26	1	63-3	O-Ring	AFLAS
27 *	1	66-93-3	U-Cup	AFLAS
28	1	63-19	Cap	VINYL
29	2	66-93-7	Chemical Seal	AFLAS
30	1	66-93-4	U-Cup	AFLAS
41	1	25-29	O-Ring	EPDM

* For 6300-1.