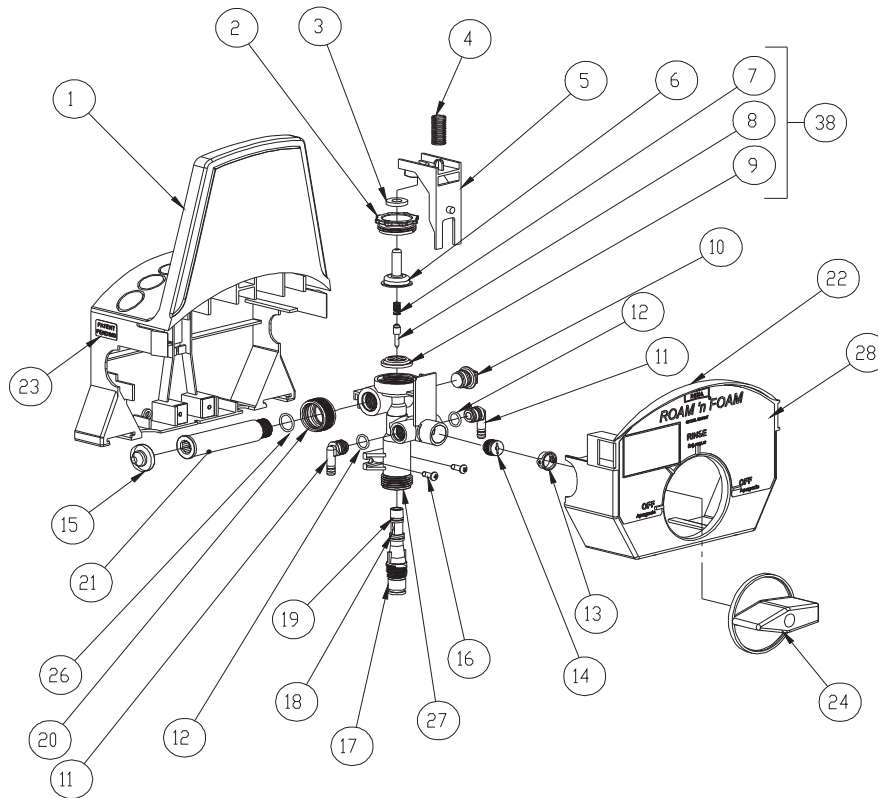


DEMA ROAM' n FOAM MODELS

625RNF, 625RNF-1, 625RNF-2, 625RNF-3, 625RNF-4 & 625RNF-5



| ITEM NO. | QTY | DEMA NO. | DESCRIPTION | MATERIAL |
|----------|-----|-------------------------------------|--|-----------------|
| 1 | 1 | 63-162-1 | Base | POLYPROPYLENE |
| 2 | 1 | 98-7-2 | Nut, Enclosing Tube Retaining | POLYPROPYLENE |
| 3 | 1 | 63-35 | Magnet | NEODYMIUM |
| 4 | 1 | 35-39 | Spring | STNLS. STL |
| 5 | 1 | 35-47 | Magnet Holder | POLYPROPYLENE |
| 6 | 1 | 41-7-25 | Enclosing Tube | STNLS. STL |
| 7 | 1 | 98-41-1 | Kickoff Spring | STNLS. STL |
| 8 | 1 | 98-24-1 | Plunger | STNLS. STL |
| 9 | 1 | 41-15-10 | 1 1/16" Diaphragm | EDPM |
| 10 | 1 | 66-153 | Pipe Plug & O-Ring | POLYPRO/EPDM |
| 11 | * | 63-79 | Inlet Barb | POLYPROPYLENE |
| 12 | * | 63-78 | O-Ring | EPDM |
| 13 | 1 | 57-10-105-5 | 2 Port Seal | VITON |
| 14 | 1 | 88-5-2 | Check Valve Assembly | PVC |
| 15 | 1 | 100-38 | Strainer Washer | BUNA\STNLS.STL. |
| 16 | 1 | 44-116-5 | #8 HiLo Screw | STNLS. STL |
| 17 | 1 | 20-1-10RF 20-1-11RF 20-1-12RF | Injector 2.1 GPM Injector 2.7 GPM Injector 3.3 GPM | POLYPROPYLENE |
| 18 | 1 | 25-29 | O-Ring | EPDM |
| 19 | 1 | 26-18 | O-Ring | EPDM |
| 20 | 1 | 65-10 | Coupling | BRASS |
| 21 | 1 | 44-108-1 | Hose Fitting | BRASS |
| 22 | 1 | 63-163-1 | Front Cover | POLYPROPYLENE |
| 23 | 1 | L915 | Label | MYLAR |
| 24 | 1 | 63-164-1 | Selector Knob | POLYPROPYLENE |
| 26 | 1 | 619-15 | O-Ring | EPDM |
| 27 | 1 | 35-48-1 | Valve Body | POLYPROPYLENE |
| 28 | 1 | ** | Label | MYLAR |
| 38 | 1 | 98-25-1 | Repair Kit | VARIOUS |
| 39 | 1 | 66.231 | Hose Clamp, Screw and Anchor Kit | VARIOUS |

* 1 ea. for 625RNF-1, -3, -5 and 2 ea. for 625RNF-2 and -4.
 ** L913-1 for 625RNF-2 and -4; L913-2 for 625RNF-1, -3 and -5.