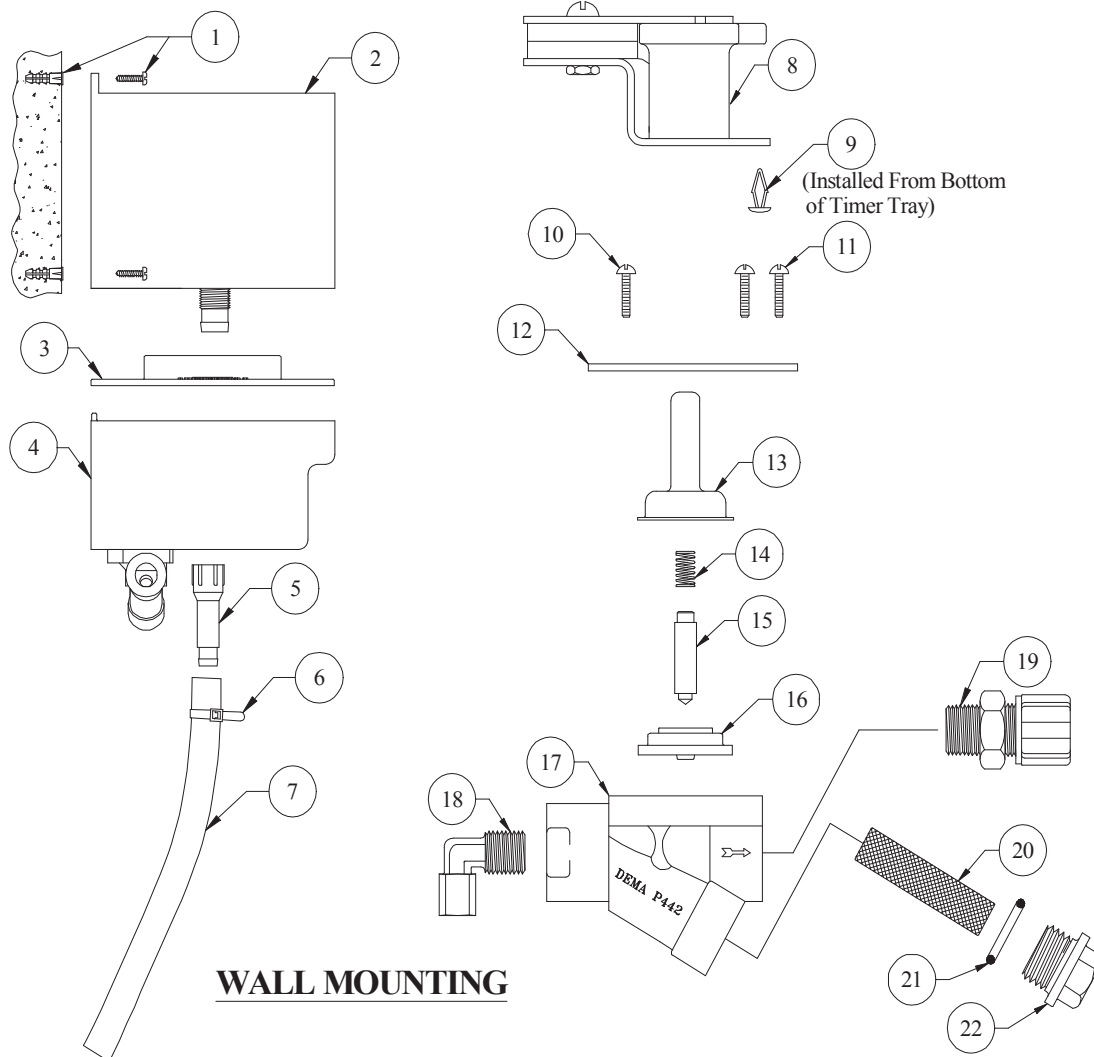


# DEMA® 581P-2W & 581A-2W SOLID BOWL FEEDER WITH TIMER TRAY

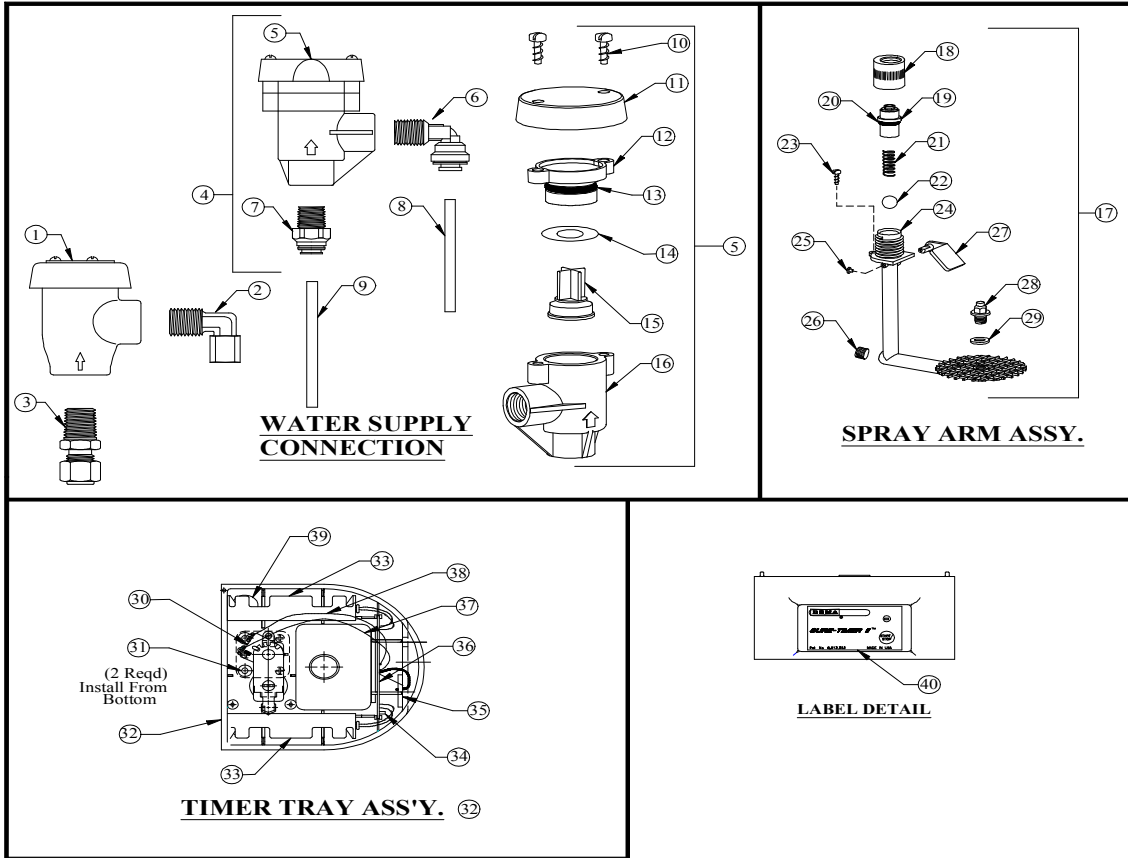


NO.	PART NO.	DESCRIPTION
1	66-123	#8 X 1-1/4" Lg. Mounting Screw & Anchor Kit
2	58-19-6	Solid Bowl Feeder
3	58-117	Equipment Tray Lid
4	58-41-2	Timer Tray Assembly
5	58-78	Adapter
6	81-16-1	Tie Warp
7	58-7	Vinyl Tubing (4' X 5/8 ID)

NO.	PART NO.	DESCRIPTION
12	41-75	Flange
13	41-7-25	Enclosing Tube (Stainless)
14	41-1-8-3	Kick-Off Spring
15	41-10-11	Plunger
16	41-15-5	Diaphragm
17	41-59-2	Valve Body
18	58-54-4	Compression Elbow
19	58-24	Compression Fitting
20	41-36-1	Strainer Screen
21	21-8	O-Ring Seal (Buna-N)
22	41-60	Screen Cap

# DEMA<sup>®</sup> 581P-2W & 581A-2W

## SOLID BOWL FEEDER WITH TIMER TRAY



WATER SUPPLY CONNECTION		
NO.	PART NO.	DESCRIPTION
1	61-93	Vacuum Breaker 1/4" (Brass)
2	58-54-4	Compression Elbow (Brass) 1/4" OD
3	58-53-8	Compression Fitting (Brass)
4	58-2	Vacuum Breaker w/Fitting (Plastic)
5	58-1	Vacuum Breaker (Plastic)
6	58-104-2	J.G. Elbow Fitting 1/4" (Plastic)
7	58-103-2	J.G. Straight Fitting 1/4" (Plastic)
8	58-6	Stainless Steel Tube 8"lg x 1/4" OD
9	58-58	LDPE Tubing 1/4"OD 2' Lg
10	24-67	#8 HiLo Screw 1"
11	58-23	Splash Guard
12	58-87	Vacuum Valve Seat
13	58-51	O-Ring EP 5/8" x 13/16" x 3/32"
14	58-86	Rubber Washer EP
15	58-21	Vacuum Poppet
16	58-20	Vacuum Breaker Body

SPRAY ARM ASSEMBLY		
NO.	PART NO.	DESCRIPTION
17	85-13B	Spray Arm Assembly (Brass)
18	58-8	Compression Nut (Brass)
19	58-112-1	Top Fitting w/O-Ring (Brass)
20	58-9	O-Ring (Only) (EP)
21	58-28	Spring
22	58-113-1	13/32 Dia. Ball (Teflon)
23	44-116-2	#8 Stainless Steel Hi-Lo Screw
24	58-18	Spray Arm
25	58-14	Arm Plug
26	58-109-1	Hex Socket Plug 1/8"
27	58-27	Safety Paddle
28	58-16-2	Spray Nozzle 1/8" NPT (Lt. Blue)
29	24-31-5	Backup Washer

TIMER TRAY ASSEMBLY		
NO.	PART NO.	DESCRIPTION
30	442PE	Valve Assembly
31	58-40	#8-32 X 3/8" Lg. Screw
32	58-41-2	Timer Tray Assembly
33	58-39-3	Battery Holder (2 Req'd)
34	82-5	Shunt
35	58-101	Reed Switch Assembly
36	58-100	Pot & Pan Soap Timer Board
37	81-32-40	Cable Assy. - Red
38	81-32-39	Cable Assy. - Black
39	25-124-4	Universal Bushing 7/8"
40	L826	Membrane Switch - Sure Timer 11

ACCESSORIES		
NO.	PART NO.	DESCRIPTION
41	25-69	AC Adapter 120V/60Hz - 12VDC (Not Shown)