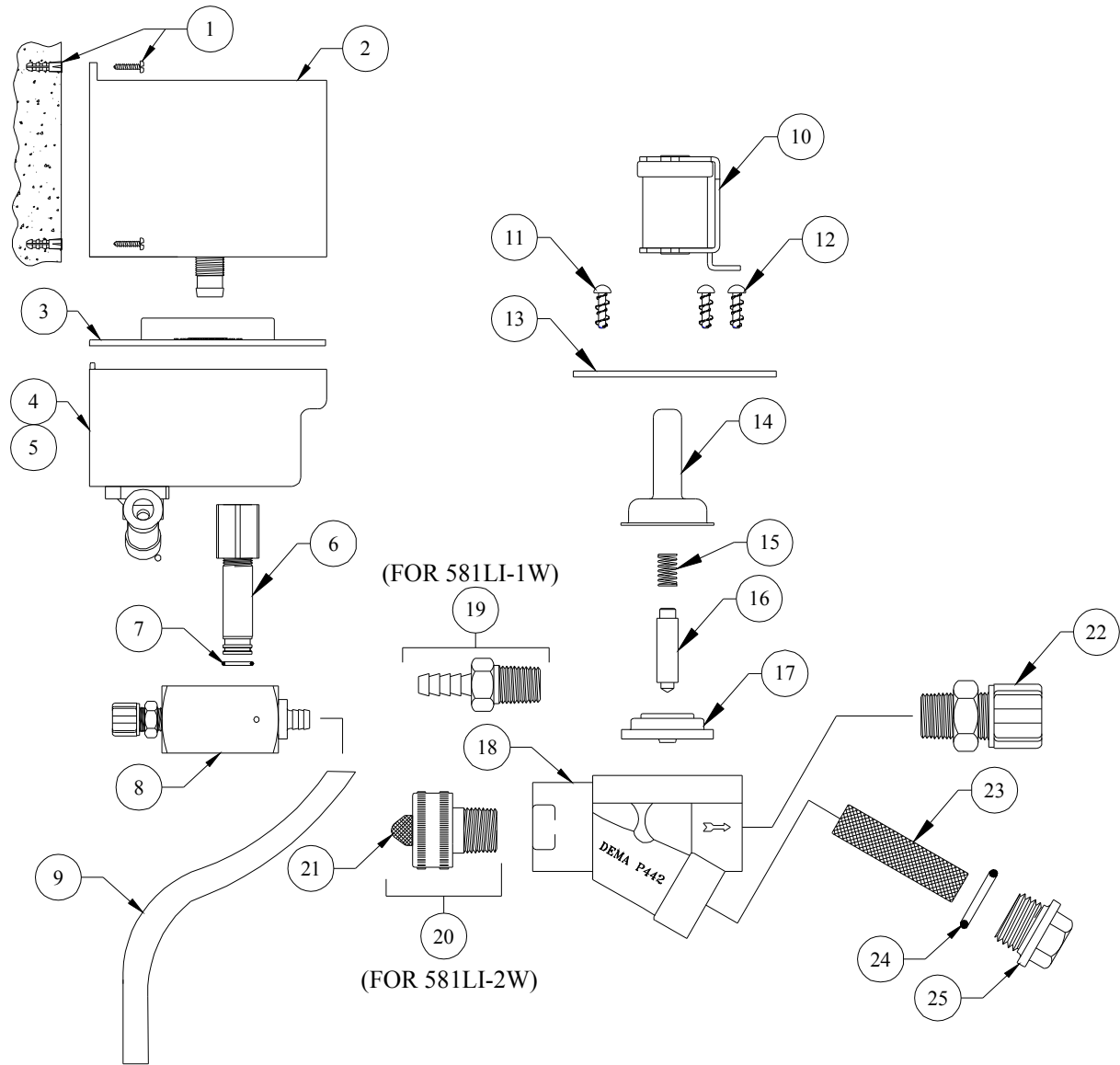


# DEMA SOLID PRODUCT LAUNDRY MASTER™

## Models 581LI-1W and 581LI-2W



### WALL MOUNTING

NO.	PART NO.	DESCRIPTION
1	66-123	Mounting Screw & Anchor Kit
2	58-19-6	Solid Bowl Feeder
3	58-117	Equipment Tray Lid
4	58-75	Timer Tray Assembly (For 51LI-1W)
5	58-75-3	Timer Tray Assembly (For 51LI-2W)
6	58-3-1	Adapter Assembly
7	58-95	O-Ring
8	58-90	Injector Assembly
9	100-12L	Plastic Tubing ½" O.D. 3/8" ID X 8' Lg.
10	41-9-5-4	Solenoid Coil
11	44-116-2	Screw #8-18 X ½" Lg. (1 Req'd)
12	44-116-1	Screw #8-18 X 3/8" Lg. (2Req'd)
13	41-75	Flange

NO.	PART NO.	DESCRIPTION
14	41-7-25	Enclosing Tube (Stainless)
15	41-1-8	Kick-Off Spring
16	41-10-11	Plunger
17	41-15-7	Diaphragm, Buna-N
18	41-59-1	Valve Body
19	66-119-18	½" Hose Barb (For 51LI-1W)
20	63-32	Swivel Adapter Assy. (For 51LI-2W)
21	100-38	Strainer Washer
22	58-24	Jaco Male Connector ¼" (Plastic)
23	41-36-1	Strainer Screen
24	21-8	O-Ring Seal, Buna-N (5/8x3/4x1/16)
25	41-60	Screen Cap