

**570 SERIES MODELS
DEMA MIXRITE WALL MOUNT & CART MOUNT UNITS**

MOUNTING HOLES & BOX DIMENSIONS.

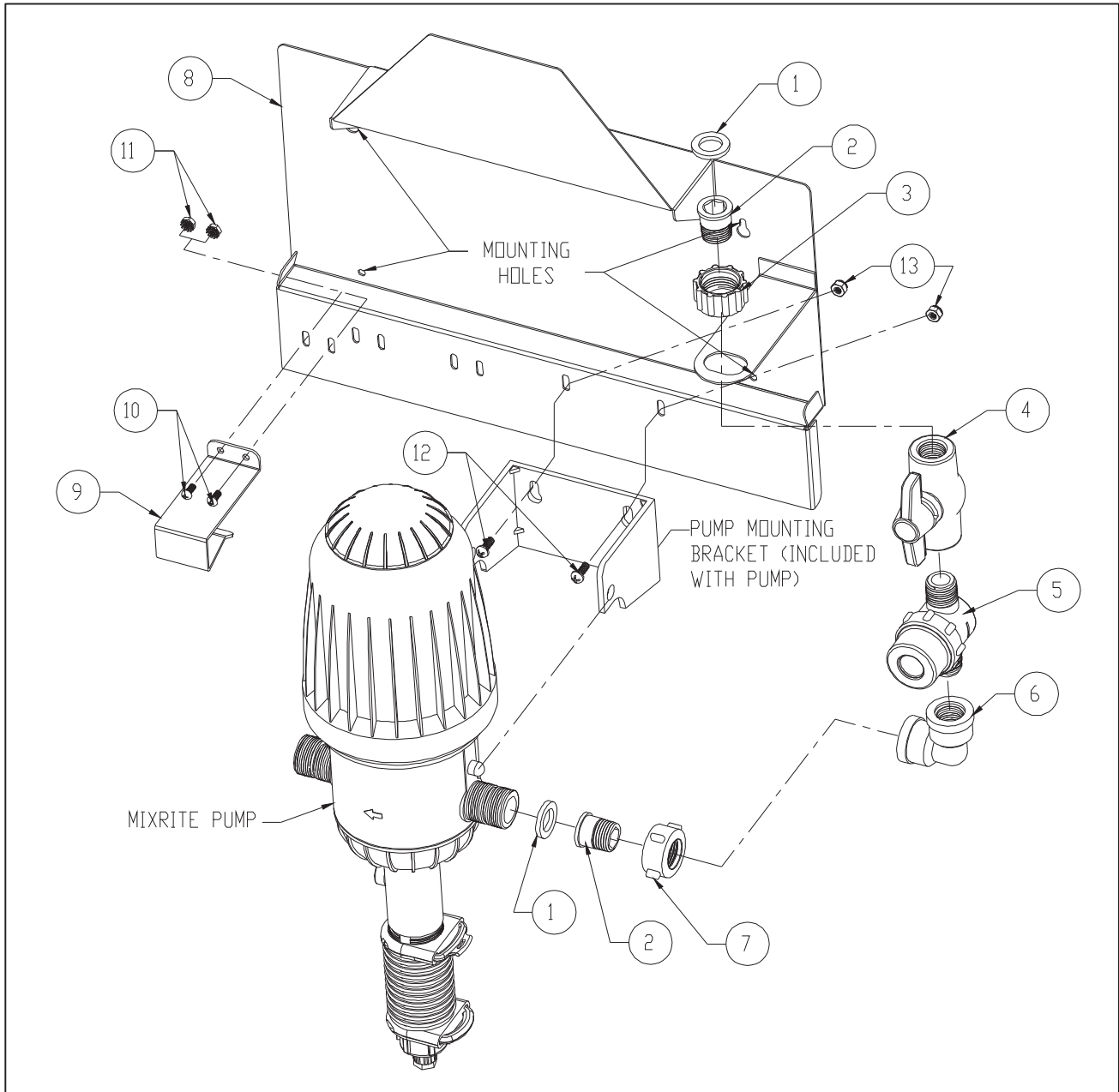
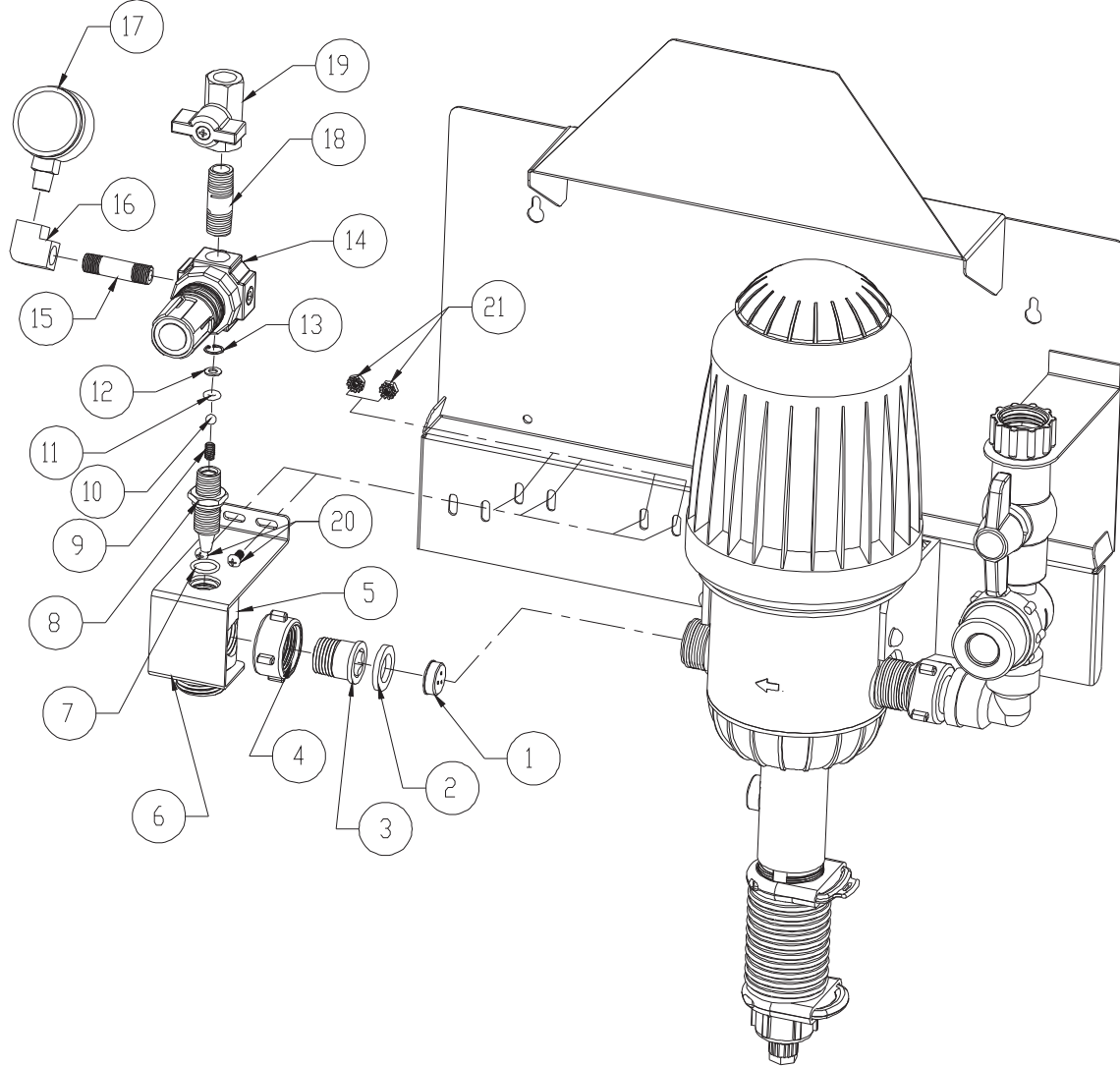


FIGURE 1

NO.	PART NO.	DESCRIPTION	NO.	PART NO.	DESCRIPTION
1	150-6	Rubber Washer – E.P.	8	57-100-1	Mounting Plate
2	93-183-1	Hose Stem Adapter	9	57-104-1	Outlet Hose Bracket
3	93-182-1	Hose Swivel Nut	10	41-63-2	#8-32 X 3/8" Long Screw
4	93-180-1	1/2" NPT Plastic Ball Valve	11	36-32-1	#8-32 Nut W/Lock Washer
5	57-101-1	Inline Strainer	12	57-105-2	#10-24 X 1/2" Long Screw
6	57-102-1	1/2" NPT Plastic Elbow	13	57-106-1	#10-24 Locking Nut
7	57-110-1	BSPT Hose Swivel Nut			

570 SERIES MODELS DEMA MIXRITE WALL MOUNT & CART MOUNT UNITS

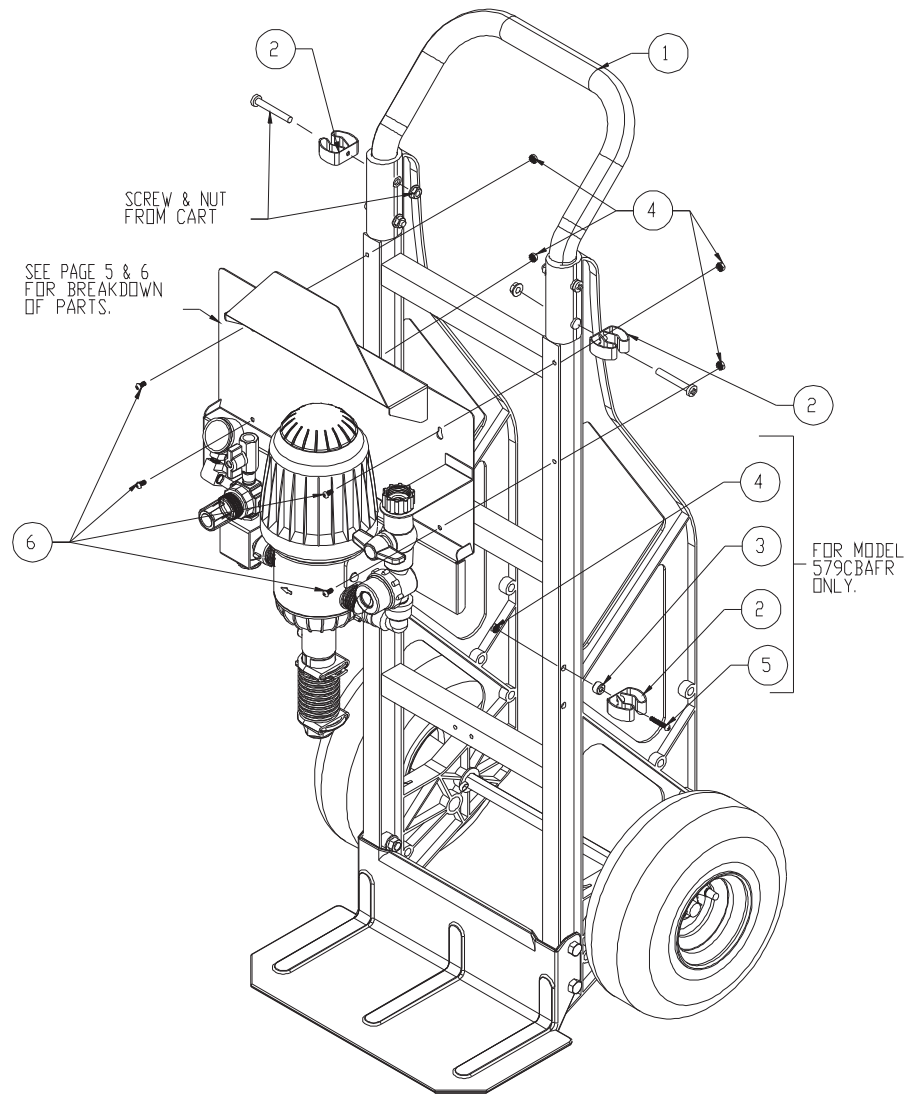


FOAM GENERATOR PARTS BREAKDOWN

NO.	PART NO.	DESCRIPTION	NO.	PART NO.	DESCRIPTION
1	57-109-1	Flow Disk **	12	29-17-5	Washer – Stainless Steel
2	150-6	Rubber Washer – E.P.	13	29-18-3	Internal Snap Ring
3	93-183-1	Hose Stem Adapter	14	93-1	Pressure Regulator
4	57-110-1	BSPT Hose Swivel Nut	15	93-103-1	1/8" NPT Pipe Nipple
5	93-260-1	Foam Generator Body	16	93-102-1	1/8" NPT Pipe Elbow
6	93-262-1	Foam Generator Bracket	17	93-15-1	Pressure Gauge
7	30-5V-14	#14 O-Ring – Viton	18	25-137-12	1/4" NPT Pipe Nipple
8	93-261-1	Air Nozzle – Stainless Steel	19	16-11	1/4" NPT Ball Valve
9	93-185-1	Spring	20	41-63-2	#8-32 X 3/8" Long Screw
10	24-24P-7	Teflon Ball	21	36-32-1	#8-32 Nut W/ Lock Washer
11	23-106V	#106 O-Ring – Viton	22	93-26-2	Foam Generator w/Bracket

**** For 578WBAF & 578CBAF only.**

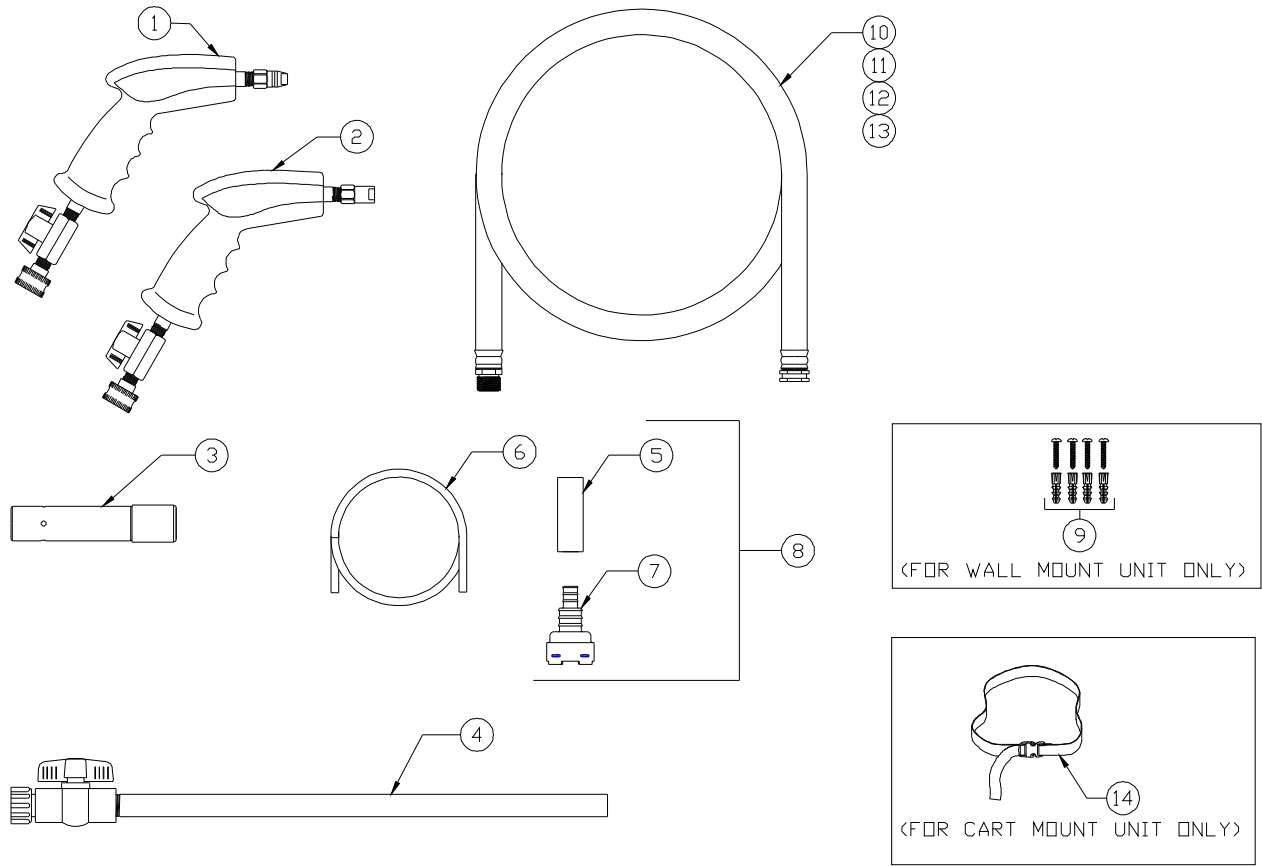
570 SERIES MODELS DEMA MIXRITE WALL MOUNT & CART MOUNT UNITS



MIXRITE CART MOUNT BREAKDOWN

NO.	PART NO.	DESCRIPTION	NO.	PART NO.	DESCRIPTION
1	90-1-2	Cart	4	36-32-1	#8-32 Nut W/Lock Washer
2	90-9-1	Spring Clip	5	41-63-8	#8-32 X 1" Long Screw
3	901-3-1	Spacer	6	41-63-2	#8-32 X 3/8" Long Screw

570 SERIES MODELS DEMA MIXRITE WALL MOUNT & CART MOUNT UNITS



**FIGURE 4
ACCESSORIES**

NO.	PART NO.	DESCRIPTION
1	40-14QD	SPRAY GUN-QUICK DISC.
2	40-14HD	SPRAY GUN - 6 GPM NOZZLE
3	292QD	FOAM WAND USED W/ 40-14QD
4	93-18-3	FOAM WAND
5	61-107	CERAMIC WEIGHT (1/2" I.D.)
6	100-16E-4	TUBING
7		FOOT VALVE (E.P.)
8		TUBING, CERAMIC WEIGHT & FOOT VALVE ASSY.
9	98-40-4	#10 SCREW & ANCHOR KIT
10	44-3N-6	1/2" ID X 6' LG. NYLON BRAIDED HOSE
11	44-3N-25	1/2" ID X 25' LG. NYLON BRAIDED HOSE
12	93-14	3/4" ID X 25' LG. RUBBER HOSE
13	57-114-1	3/4" ID X 25' LG. RUBBER HOSE W/ STRAINER WASHER
14	901-1-1	STRAP W/ SIDE RELEASE BUCKLE

MODEL NO.	ACCESSORIES REC'D W/ MODELS											
	ACCESSORY NO.											
	1	2	3	4	5	6	7*	8	9	10	11	12**
570[]S		X			X	X	X	X	X			X
571[]SR		X			X	X	X	X	X			X
572[]S		X			X	X	X	X	X			X
573[]SR		X			X	X	X	X	X			X
573[]SFR	X		X		X	X	X	X	X			X
573[]AFR		X			X	X	X	X		X		X
576[]BS		X			X	X	X	X	X			X
577[]BSR		X			X	X	X	X	X			X
578[]BS		X			X	X	X	X	X			X
579[]BSR		X			X	X	X	X	X			X
579[]BSFR	X		X		X	X	X	X	X			X
578[]BAF				X	X	X	X	X			X	X

* For wall mount units only.

** For cart mount units only.