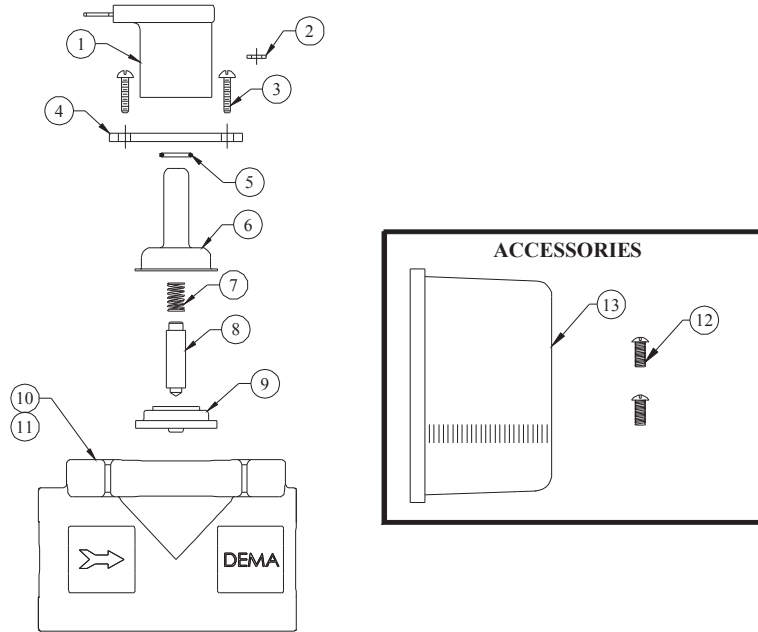


# SOLENOID VALVE

## MODELS: 463PS & 464PS



NO.	PART NO.	DESCRIPTION
1	41-9-5A	Solenoid Coil (Specify Voltage)
2	41-41	Nylon Washer
	41-42	Nylon Spacer Washer (for DIN)
3	41-16-9	#8-18 Hex Washer Head Screw (4 Reqd.)
	41-16-8	8/32" x 5/8" Hex Washer Screw (for DIN)
4	41-72-2	Flange
5	41-34	Spacer Ring
6	41-7-25	Enclosing Tube (Stainless)
7	41-1-8	Kick-Off Spring
8	41-10-11	Plunger
9	41-15-10	Diaphragm (EPDM) - Standard
	41-15-6	Diaphragm (Viton)
	41-15-7	Diaphragm (Buna-N)
10	35-40	Valve Body (464PS)
11	35-41	Valve Body (463PS)

ACCESSORIES		
NO.	PART NO.	DESCRIPTION
12	41-63-2	Screw #8-32 X 3/8 Rd Hd Phil S.S. (2 Reqd.)
13	41-73	Solenoid Cover