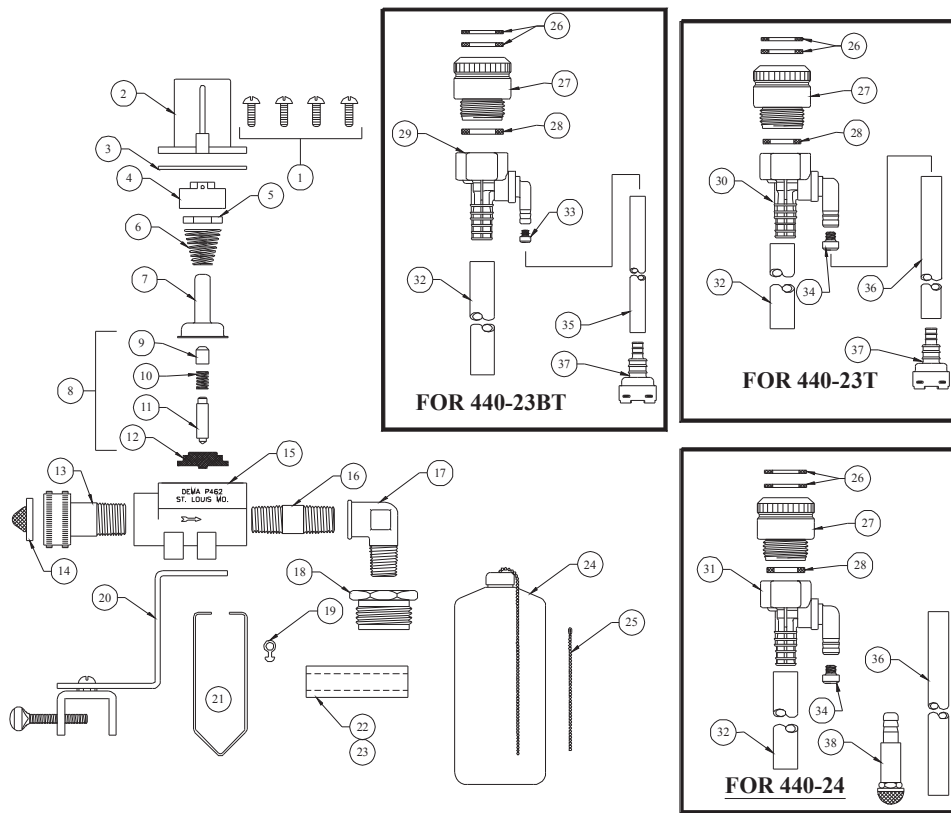


# DEMA FLOAT VALVE WITH PROPORTIONER

MODELS: 440-23T, 440-23BT, 440-24



NO.	PART NO.	DESCRIPTION
1	44-116-1	Screws
2	35-44	Magnet Housing
3	35-37	Flange
4	35-43	Magnet Holder
5	63-35	Magnet
6	35-33	Spring
7	41-7-25	Enclosing Tube
8	63-87	Valve Repair Kit
9	63-37	Spacer
10	41-1-8	Spring
11	63-38	Plunger
12	41-15-10	Diaphragm
13	61-120	Inlet Hose Adapter
14	100-38	Inlet Washer Screen
15	35-36	Valve Body
16	25-78	Pipe Nipple 1/4" x 2" plated
17	61-121-2	Elbow Brass
18	61-122-2	Adapter (MGHT x 1/4" FNPT)
19	35-12	Float Hanger Clip
20	35-34	Mounting Bracket Assembly
21	35-42	Float Hanger Wire

NO.	PART NO.	DESCRIPTION
22	61-107-5	Ceramic Weight (For 3/8" Tube)
23	61-107-4	Ceramic Weight (For 1/4" Tube)
24	35-18	Float Assembly
25	34-17	16" Chain w/Connector
26	100-3	Rubber Washer
27	16-30	Action Gap Backflow Preventer
28	100-3	Rubber Washer
29	61-22-3	4 GPM (1/4" Barb) White Proportioner (440-23BT)
30	61-22-2	4 GPM (3/8" Barb) White Proportioner (440-23T)
31	163CH	4 GPM (3/8" Barb) Blue Proportioner (440-24)
32	16-3	3' Discharge Tubing
33	100-15	Metering Tip (Specify Color)
34	61-9	Metering Tip (Specify Color)
35	100-12	8' Plastic Tubing (7/32" ID)
36	100-12L	8' Plastic Tubing (3/8" ID)
*37	100-16E-	Foot Valve
38	903	Foot Valve

\*Foot Valve also available with silicone (100-16S) or Viton (100-16V) rubber seals. Please specify material when ordering.