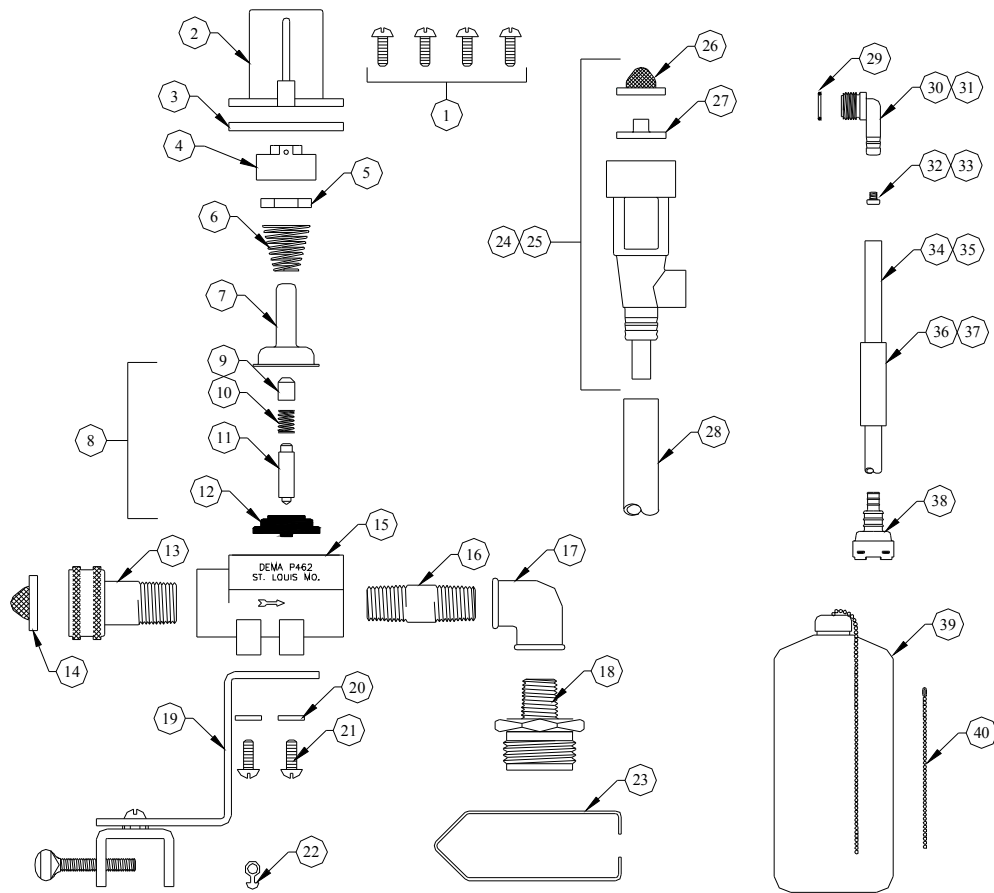


DEMA 440-23BAG and 440-23AG FLOAT VALVE WITH PROPORTIONER



NO.	PART NO.	DESCRIPTION
1	44-116-1	Screws
2	35-44	Magnet Housing
3	35-37	Flange
4	35-43	Magnet Holder
5	63-35	Magnet
6	35-33	Spring
7	41-7-25	Enclosing Tube
8	63-87	Valve Repair Kit
9	63-37	Spacer
10	41-1-8	Spring
11	63-38	Plunger
12	41-15-10	Diaphragm
13	63-120	Inlet Hose Adapter
14	100-38	Inlet Washer Screen
15	35-36	Valve Body
16	25-78	Pipe Nipple 1/4" x 2" Plated
17	61-121-2	Elbow 1/4" Brass
18	61-122-2	Adapter (MGHT x 1/4" FNPT)
19	35-34	Mounting Bracket Assembly
20	41-62-3	Washer
21	41-62-2	Screw (4 Req'd)

NO.	PART NO.	DESCRIPTION
22	35-12	Float Hanger Clip
23	35-42	Float Hanger Wire
24	61-22-3AG	4 GPM (3/8" Barb) Proportioner
25	61-22-3BAG	4 GPM (1/4" Barb) Proportioner
26	100-38	Strainer Washer
27	63-73	Nozzle
28	63-83	6' Discharge Tubing
29	63-78	O-Ring
30	63-79	Inlet Barb (1/4" Barb)
31	63-80	Inlet Barb (3/8" Barb)
32	61-9K	Metering Tip Kit (440-23AG)
33	100-15K	Metering Tip Kit (440-23BAG)
34	100-12	8' Plastic Tubing (3/16" OD)
35	100-12L	8' Plastic Tubing (1/2" OD)
36	61-107	Ceramic Weight (For 3/8" Tube)
37	61-107-2	Ceramic Weight (For 1/4" Tube)
*38	100-16E	Foot Valve
39	35-18	Float Assembly
40	34-17	16" Chain w/Connector

*Foot Valve also available with silicone (100-16S) or Viton (100-16V) rubber seals. Please specify material when ordering.