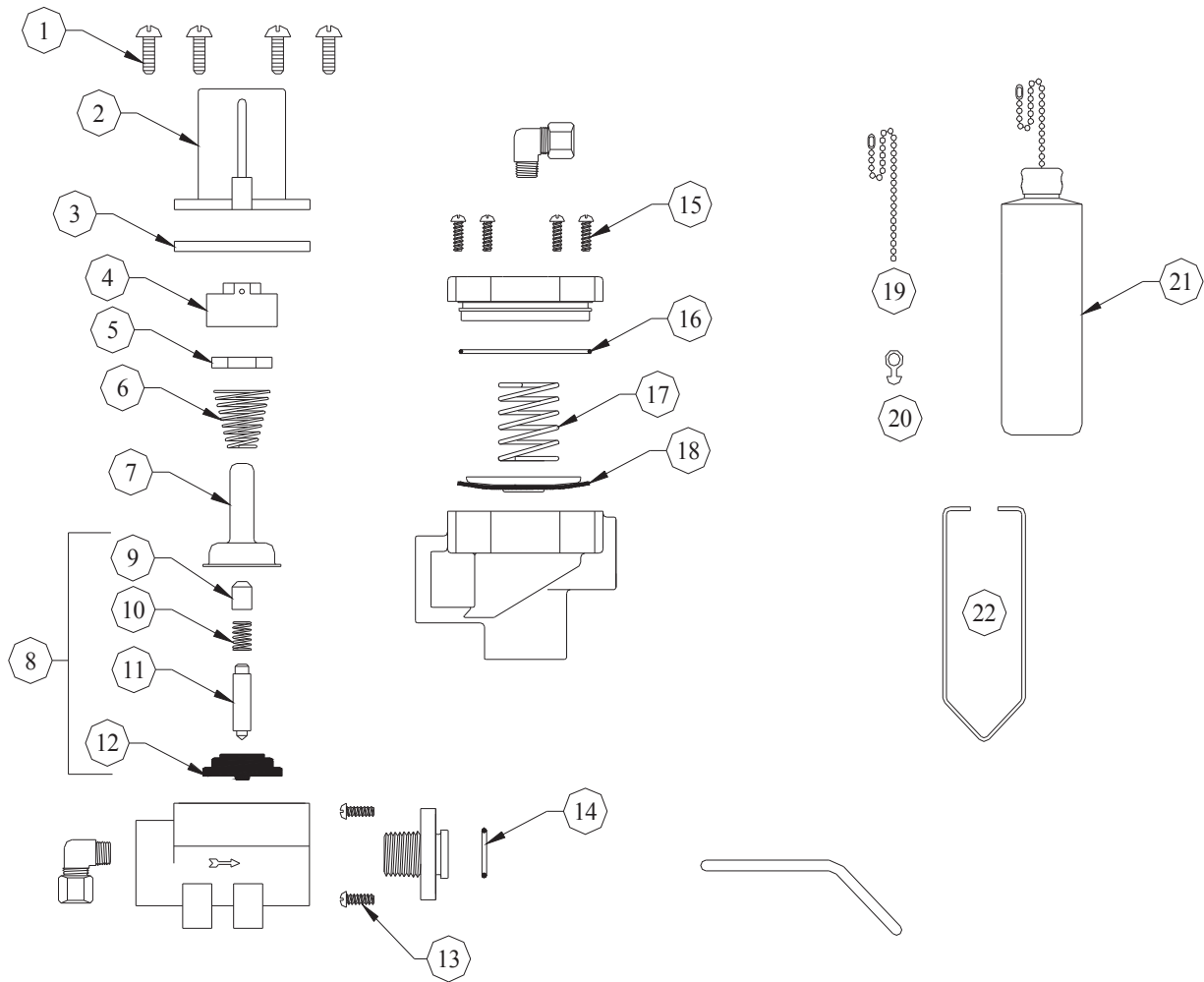


DEMA FLOAT VALVE MODEL 437PN



NO.	PART NO.	DESCRIPTION
1	44-116-1	Valve Cover Screw (4 Req'd)
2	35-44	Magnet Cover
3	35-37	Flange
4	35-43	Magnet Holder
5	63-35	Magnet
6	35-33	Magnet Spring
7	41-7-25	Enclosing Tube
8	63-87	Valve Repair Kit
9	63-37	Spacer

10	41-1-8	Kick-off Spring
11	63-38	Plunger

NO.	PART NO.	DESCRIPTION
12	41-15-10	Diaphragm
13	58-60	Machine Screws (2 Req'd)
14	41-5-8	O-Ring
15	36-14-4	Valve Cover Screws (4Req'd)
16	66-9	O-Ring
17	36-4	Closing Spring

18	36-23	Diaphragm Assembly
19	34-17	16'' Chain W/Connector
20	35-12	Float Hanger Clip
21	35-18	Float Assembly
22	35-42	Float Hanger Wire