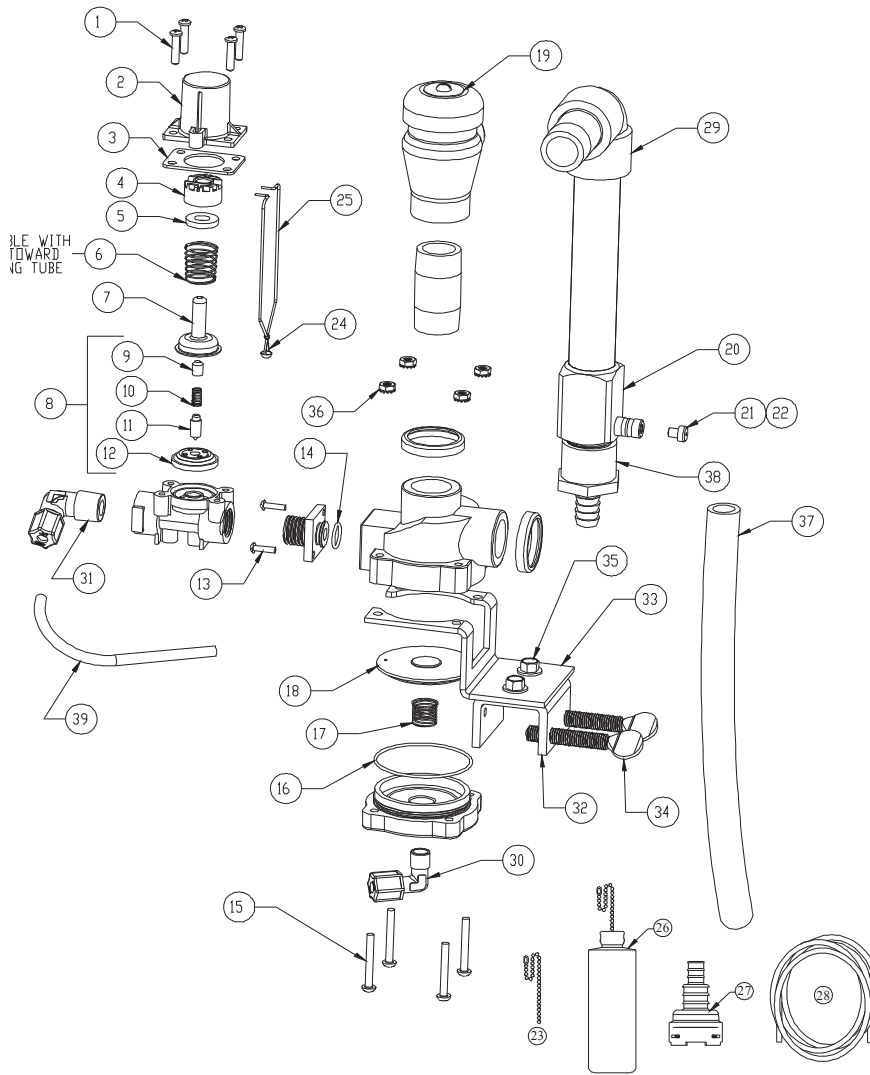


# WATCH GUARD MODEL 437P-21



| NO. | PART NO. | DESCRIPTION                  |
|-----|----------|------------------------------|
| 1   | 44-116-1 | Valve Cover Screws (4 Req'd) |
| 2   | 35-44    | Magnet Cover                 |
| 3   | 35-37    | Flange                       |
| 4   | 35-43    | Magnet Holder                |
| 5   | 63-35    | Magnet                       |
| 6   | 35-33    | Magnet Spring                |
| 7   | 41-7-25  | Enclosing Tube               |
| 8   | 63-87    | Valve Repair Kit             |
| 9   | 63-37    | Spacer                       |
| 10  | 41-1-8   | Kick-off Spring              |
| 11  | 63-38    | Plunger                      |
| 12  | 41-15-10 | Diaphragm                    |
| 13  | 58-60    | Machine Screw (2 Req'd)      |
| 14  | 41-5-8   | O-Ring                       |
| 15  | 36-15-1  | Valve Cover Screws (4 Req'd) |
| 16  | 66-9     | O-Ring                       |
| 17  | 36-4     | Closing Spring               |
| 18  | 36-23    | Diaphragm Assembly           |
| 19  | 36-13    | Vacuum Breaker               |

| NO. | PART NO.  | DESCRIPTION                   |
|-----|-----------|-------------------------------|
| 20  | 36-21     | Injector                      |
| 21  | 61-9      | Metering Tip (Specify Color)  |
| 22  | 61-9K-FV  | Metering Tip Kit (13 Tips)    |
| 23  | 34-17     | 16" Chain w/Connector         |
| 24  | 35-12     | Float Hanger Clip             |
| 25  | 35-42     | Float Hanger Wire             |
| 26  | 35-18     | Float Hanger Assembly         |
| 27  | 100-16V   | Foot Valve                    |
| 28  | 100-2L    | Plastic Tubing 3/8" ID 8' Lg. |
| 29  | 36-34-1   | 3/4" Pipe Elbow               |
| 30  | 59-60-6   | 1/8" NPT X 1/4" OD Fitting    |
| 31  | 59-60-7   | 3/8" NPT X 1/4" OD Fitting    |
| 32  | -         | U Bracket                     |
| 33  | -         | Z Bracket                     |
| 34  | -         | Thumbscrew                    |
| 35  | -         | Flange Bolt                   |
| 36  | -         | Hex Nuts                      |
| 37  | 96-75-10  | Fill Tube                     |
| 38  | 66-119-61 | Barb 3/4" FNPT x 3/4"         |
| 39  | -         | 1/4" LDPE Tubing, 8"          |