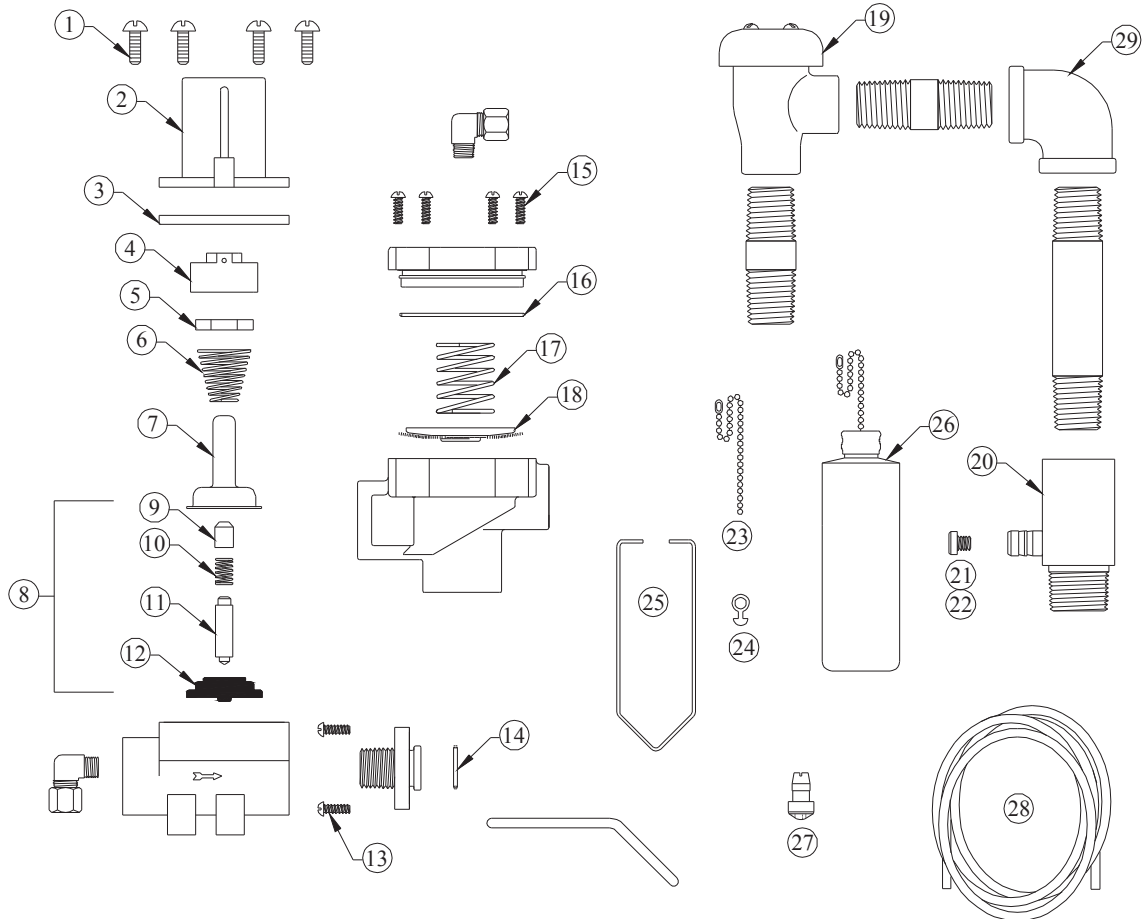


DEMA FLOAT VALVE MODEL 437P-21



NO.	PART NO.	DESCRIPTION
1	44-116-1	Valve Cover Screws (4 Req'd)
2	35-44	Magnet Cover
3	35-37	Flange
4	35-43	Magnet Holder
5	63-35	Magnet
6	35-33	Magnet Spring
7	41-7-25	Enclosing Tube
8	63-87	Valve Repair Kit
9	63-37	Spacer
10	41-1-8	Kick-off Spring
11	63-38	Plunger
12	41-15-10	Diaphragm
13	58-60	Machine Screw (2 Req'd)
14	41-5-8	O-Ring
15	36-14-4	Valve Cover Screws (4 Req'd)

NO.	PART NO.	DESCRIPTION
16	66-9	O-Ring
17	36-4	Closing Spring
18	36-23	Diaphragm Assembly
19	36-13	Vacuum Breaker
20	36-21	Injector
21	61-9	Metering Tip (Specify Color)
22	61-9K	Metering Tip Kit (13 Tips)
23	34-17	16" Chain w/Connector
24	35-12	Float Hanger Clip
25	35-42	Float Hanger Wire
26	35-18	Float Hanger Assembly
27	36-10	Foot Valve
28	100-2L	Plastic Tubing 3/8" ID 8' Lg.
29	36-34-1	3/4" Pipe Elbow
--	35-46	Valve Body