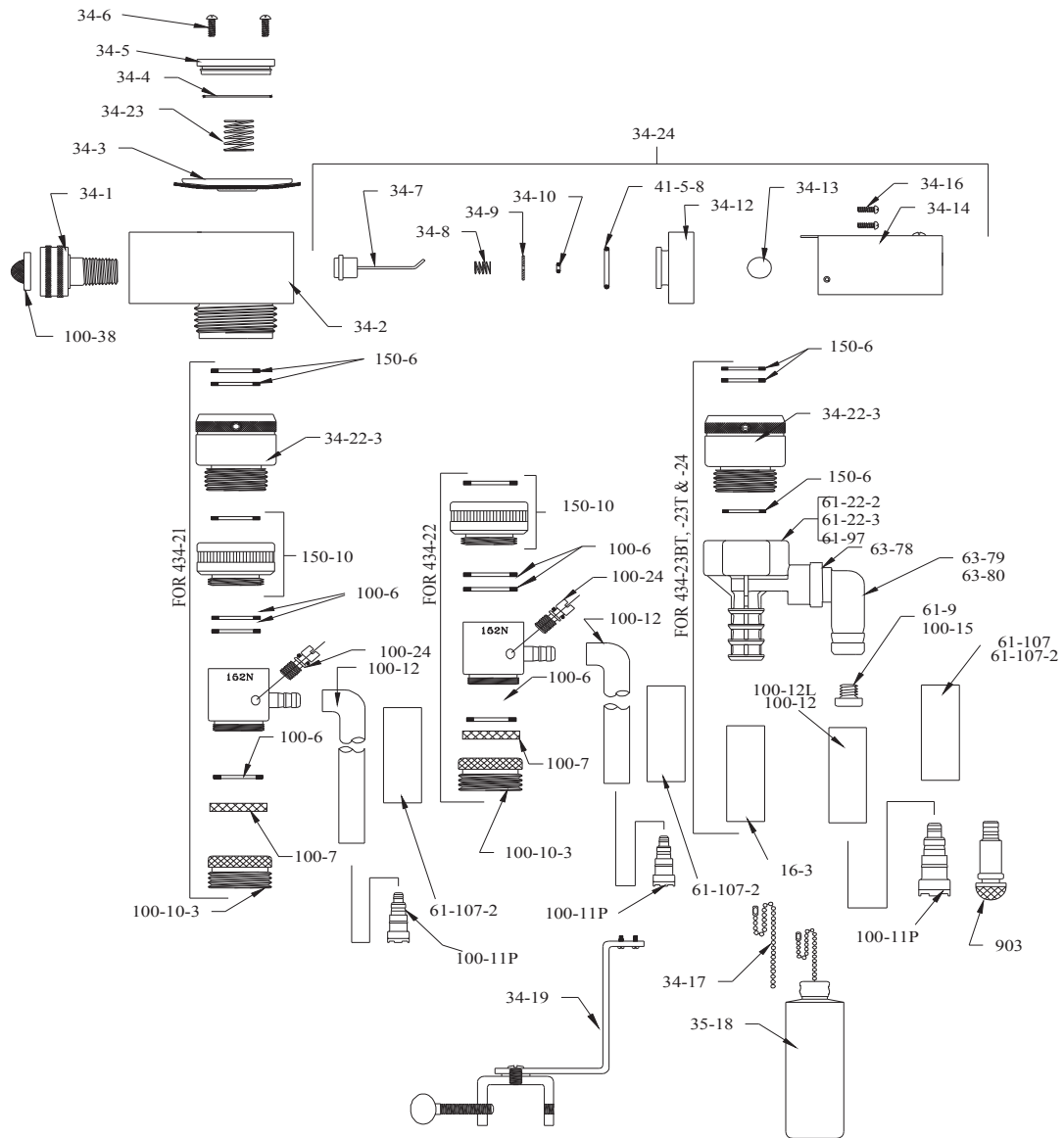


# DEMAMATIC LIQUID PROPORTIONING LEVEL CONTROLS

## MODELS 434-21, 434-22 & 434-23BT, 434-23T AND 434-24



PART NO.	DESCRIPTION	PART NO.	DESCRIPTION
16-3	3' DISCHARGE TUBING	61-9	METERING TIP, SPECIFY SIZE (434-23T, -24 ONLY)
34-1	INLET HOSE ADAPTER	61-22-2	PROPORTIONER ASSY (434-23T)
34-2	BODY ASSEMBLY	61-22-3	PROPORTIONER ASSY (434-23BT)
34-3	DIAPHRAGM ASSEMBLY	61-97	PROPORTIONER ASSY (434-24)
34-4	VALVE COVER O-RING	61-107	CERAMIC WEIGHT (434-23T, 434-24 ONLY)
34-5	VALVE COVER	61-107-2	CERAMIC WEIGHT
34-6	VALVE COVER SCREWS (2)	63-78	O-RING
34-7	PILOT VALVE DISC AND STEM ASSEMBLY	63-79	INLET BARB (434-23BT ONLY)
34-8	PILOT VALVE SPRING	63-80	INLET BARB (434-23T, -24 ONLY)
34-9	PILOT VALVE PLATE	100-6	RUBBER WASHER
34-10	PILOT VALVE STEM O-RING	100-7	COPPER BOUND SCREEN
34-12	PILOT VALVE COVER	100-10-3	ADAPTER FOR 3/8" PIPE OR GARDEN HOSE
34-13	STEM NUT WITH SET SCREW	100-11P	FOOT VALVE
34-14	LEVER ASSEMBLY	100-12	8' PLASTIC SUPPLY TUBING (434-23BT)
34-16	LEVER ASSEMBLY SCREWS (2)	100-12L	8' PLASTIC SUPPLY TUBING (434-23T, 24)
34-18	FLOAT ASSEMBLY	100-15	METERING TIP, SPECIFY SIZE (434-23BT ONLY)
34-19	MOUNTING BRACKET ASSY.	100-24	METERING SCREW
34-22-3	BACKFLOW PREVENTER	100-38	INLET SCREEN WASHER
34-23	CLOSING SPRING	150-6	RUBBER WASHER
34-24	PILOT VALVE ASSEMBLY	150-10	ADAPTER W/ RUBBER WASHER
41-5-8	PILOT VALVE COVER O-RING	903	FOOT VALVE (434-24 ONLY)

### ACCESSORIES

PART NO.	DESCRIPTION
34-17	16" CHAIN WITH CONNECTOR
61-9K	METERING TIP KIT
100-15K	METERING TIP KIT