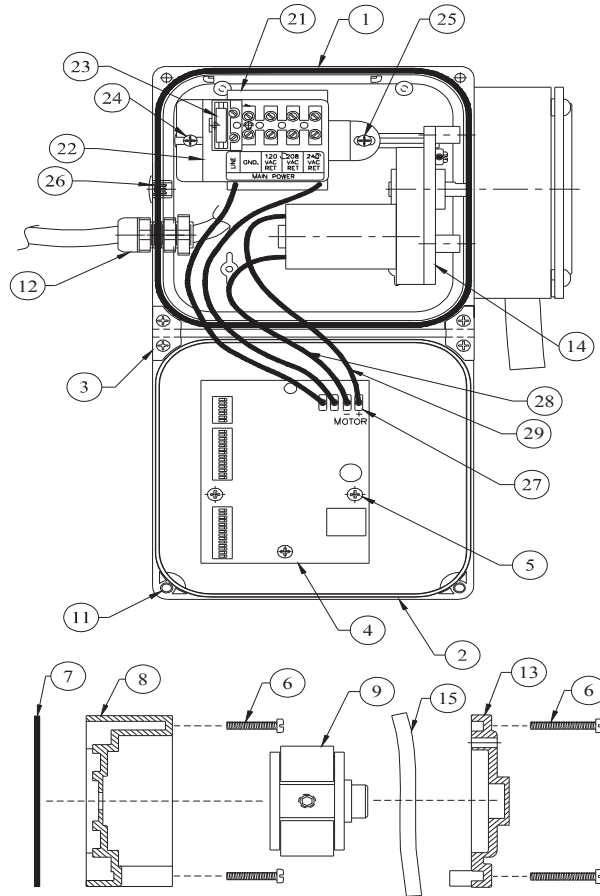


DEMA® 259BT-230 TRASH MASTER



Replacement Parts			
Item No.	DEMA Part No.	Description	Amount Required
1	81.40	Electrical Enclosure Kit	1
2	81.41	Electrical Enclosure Cover Kit (81.29.2 Captive Screws included in kit)	1
3	81.6	Electrical Enclosure Hinge Kit	2
4	25.121.2	Trash Master Electronic Control Board	1
5	81.20.2	Control Board Screw	3
6	25.85.5	#10-32 x 1" Pump Screw	9
7	81.63	Pump Mounting Adapter Plate	1
8	25.129.1	C4 Granite Color Pump Head	1
9	25.86C4	C4 Pump Roller Block (2 Roller)	1
10	25.114C4	C4 Pump Gasket	1
11	81.29.2	Captive Screw for Electrical Enclosure Cover	2
12	81.16	Liquid Tight Feed Thru	1
13	25.87C4	C4 Clear Pump Face Plate	1
14	80.59.60CE	Gear Motor Assembly – 60 RPM	1
15	25.89CE.14	EPDM Pump Squeeze Tube	1
16	25.68.20	20 Ft. of 1/4" LDPE Tubing (white tubing, not shown)	1
17	80.66	10" Pick Up Tube Assembly (grey PVC tube with white nut, not shown)	1
18	81.1	Wall Bracket Kit (stainless plate with screws, not shown)	1
19	25.113	9 Volt Alkaline Battery (not included with unit, not shown)	1
20	L768.1	Drain Master Label (front face label)	1
21	80.70	40VA Transformer	1
22	25.139.4	Fused Terminal Block and Bracket assembly (fuse included in terminal block)	1
23	25.138.1	Fuse, 5mm x 20mm 1A, 250V	1
24	44.116.1	#8 x 1/2" Hi-Lo Screw	1
25	44.116.2	#8 x 3/8" Hi-Lo Screw	1
26	81.47.1	7/8" Hole Plug	1
27	81.14.15	Female Quick Connect	2
28	81.32.43	Black Cable Assembly	1
29	81.32.44	Red Cable Assembly	1

See the diagrams on the following pages to aid in identifying parts.