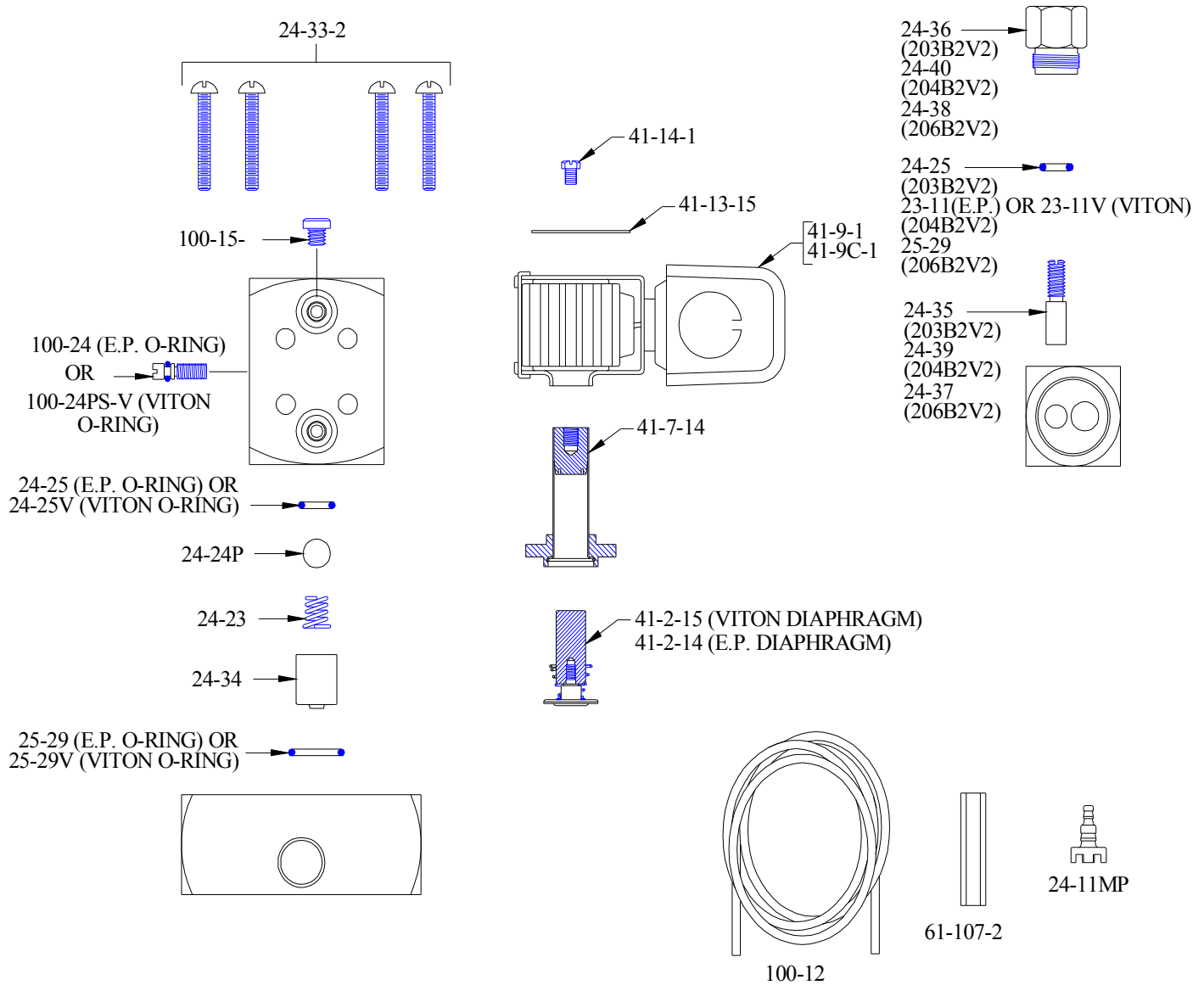


ADJUSTABLE SINGLE-STAGE INJECTORS

MODELS: 203B2V2, 204B2V2 and 206B2V2



PART NO.	DESCRIPTION
23-11	O-RING (E.P.)
23-11V	O-RING (VITON)
24-11MP	FOOT STRAINER
24-23	CHECK VALVE SPRING
24-24P	CHECK VALVE BALL
24-25	CHECK VALVE O-RING (E.P.)
24-25V	CHECK VALVE O-RING (VITON)
24-33-2	SCREW #8-32 X 1 3/8 LG. (4-REQD.)
24-34	CHECK VALVE CORE (SPECIFY MODEL NO.)
24-35	BY-PASS SCREW
24-36	BY-PASS SCREW RETAINER
24-37	BY-PASS SCREW
24-38	BY-PASS SCREW RETAINER
24-39	BY-PASS SCREW
24-40	BY-PASS SCREW RETAINER

PART NO.	DESCRIPTION
25-29	O-RING (E.P.)
25-29V	O-RING (VITON)
41-14-1	TOP PLUG SCREW
41-2-14	PLUNGER ASSEMBLY (WITH E.P. DIAPHRAGM & SPRING)
41-2-15	PLUNGER ASSEMBLY (WITH VITON DIAPHRAGM & SPRING)
41-7-14	ENCLOSING TUBE ASSEMBLY
41-9-1	SOLENOID COIL (SPECIFY VOLTAGE) JUNCTION BOX AS SHOWN
41-9C-1	SOLENOID COIL (SPECIFY VOLTAGE) CONDUIT CONNECTION
41-13-15	NAMEPLATE
61-107-2	CERAMIC WEIGHT
100-12	VINYL TUBING (3/8" O.D. X 8' LG)
100-15K	METERING TIP KIT (14 PCS.)
100-24	METERING SCREW (-B INJECTORS) W/E.P. O-RING
100-24PS-V	METERING SCREW (-B INJECTORS) W/VITON O-RING