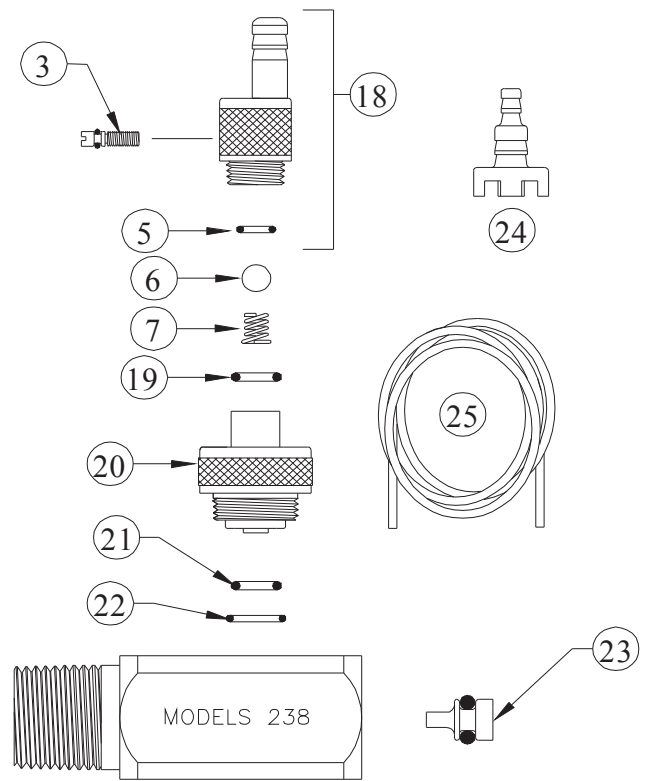
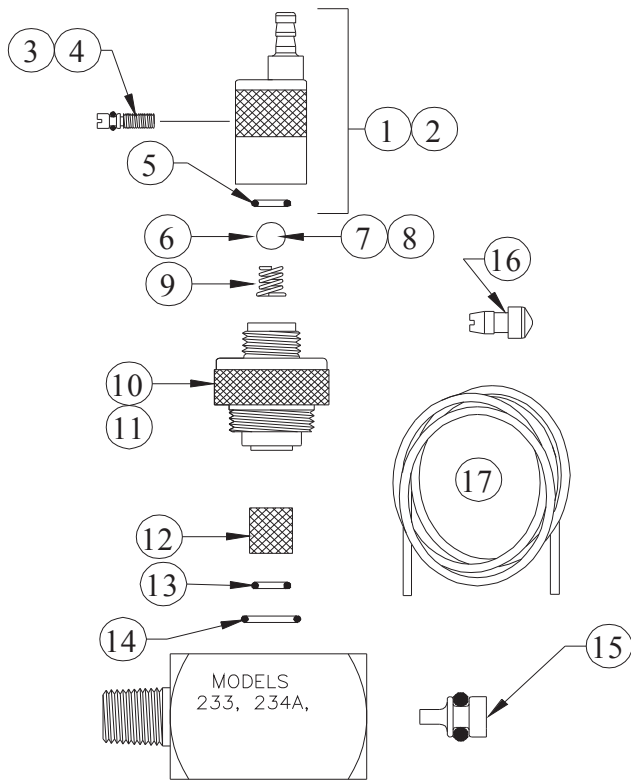


TWO-STAGE INJECTOR MODELS 233, 234A, 236A, 236-8, 238, AND 2312



NO.	PART NO.	DESCRIPTION
1	23-1	CASE ASSEMBLY
2	23-2	CASE O-RING, SMALL
3	23-3	CAGE O-RING, LARGE
4	23-5	FIRST-STAGE VENTURI
5	23-8-	WATER NOZZLE – ADD NUMBER STAMPED ON NOZZLE
6	23-26S	METERING KNOB COMPLETE
7	23-27	METERING KNOB O-RING
8	24-1	CAGE ASSEMBLY
9	24-1P	CAGE ASSEMBLY (-P INJECTORS)
	24-2	CAGE O-RING, SMALL
10	24-3	CAGE O-RING, LARGE
11	24-4	CAGE SCREEN
12	24-5	FIRST STAGE VENTURI
13	24-5P	FIRST STAGE VENTURI (-P INJECTORS)

NO.	PART NO.	DESCRIPTION
14	24-8-	WATER NOZZLE – ADD NUMBER STAMPED ON NOZZLE
15	24-10	VINYL TUBING (1/2" O.D. X 8 FT LG.)
16	24-11MP	FOOT STRAINER
17	24-11SP	FOOT STRAINER
18	24-23	CHECK VALVE SPRING
19	24-24P	CHECK VALVE BALL (-P INJECTORS)
20	24-24S	CHECK VALVE BALL
21	24-25	CHECK VALVE O-RING
22	24-26S	METERING KNOB, COMPLETE
23	24-26SP	METERING KNOB, (-P INJECTORS)
24	100-12	VINYL TUBING (1/2" O.D. X 8 FT LG.)
25	100-24	METERING SCREW
26	100-24SP	METERING SCREW (-P INJECTORS)