

DEMA DUAL SINK DISPENSER

MODEL: 652GAP & 652GAP-2M



INSTALLATION INSTRUCTIONS

The Model 652GAP Dual Sink Dispenser dispenses two products into a kitchen sink with the turn of a ball valve.

1. PARTS:

ITEM	DESCRIPTION	QTY.
A	Dual Sink Dispenser Assembly	1
B	¼" I.D. X 8' Long Vinyl Supply Tubing & Foot Valve Assembly	2
C	Ceramic Weight	2
D	½" ID X 6' Long Vinyl Outlet Tubing	1
E	#10 Screw & Anchor Kit Set (Total 4 Screws & 4 Anchors)	1
F	Label Card	1
G	Metering Tip Kit	1

2. INSTALLATION: (See Figure 1 for setup diagram)

This product is designed only to be used as described in this instruction sheet. Adhere to all warnings and cautions identified in this document.	
	WARNING: Installations must conform to all local and national plumbing codes and use approved backflow prevention and pressure relief devices where required. ALWAYS DISCONNECT DISPENSER FROM WATER SOURCE WHEN DISPENSER IS NOT IN USE.
	Always read SDS for all chemicals used and follow personal protective guidelines.

A. Mounting and Water Supply:

Locate mounting holes on a permanent surface above sink. Drill all of the holes into the drywall using a ¼" diameter bit for use with the included #10 screw and anchor set. (If mounting the Dispenser to wood and you do not plan to use the included anchors, drill 1/8" diameter holes.) Insert the anchors into drilled holes and hammer them into the wall until they are flush with face of wall. Assemble all of the #10 screws with a Phillips screwdriver into the anchors so the screw heads are sticking out of the wall approximately ½". Mount the Dispenser by inserting the screw heads through the keyhole slots in the cover and tightening the screws. The unit needs to be mounted high enough that the sink does not interfere with the outlet tubes, putting a strain on the proportioners. If this is not possible, tie the outlet tubes together approximately 4" below where the tubes attach to the proportioners.

The water inlet is equipped with a female garden hose adapter to permit connection to the right hand side of the unit. The water supply can be attached to the left side of the unit by interchanging the plug in the left-hand side with the garden hose adapter. **NOTE: Apply pipe dope, hand tighten, and then turn 1-1/2 times with a wrench (DO NOT OVER TIGHTEN).**

WARNING: Do not use Teflon® tape to seal internal plastic threads as the extra thickness of the tape may cause the plastic to crack. Use a non-welding liquid sealant instead.

B. Chemical Supply:

Place the chemical containers in a convenient location not more than 6 ft. below the dispensing unit. (**Note: greater lifts will reduce injection capacities.**) Slip a ceramic weight over a chemical supply tube. Insert the end with the foot valve and ceramic weight of the 8 ft long chemical supply tube into the chemical container. Cut the chemical supply tube to any convenient length that will allow the tube to extend from the bottom of the chemical container to the proportioner inlet barb. Install open end side of the chemical supply tube by pushing the tube over proportioner inlet barb. Repeat this procedure for the other chemical container.

C. Outlet:

For each of the proportioner outlets: Cut the 1/2" I.D. outlet tubing to the desired length and attach to the proportioner outlet barb. **Note: DO NOT force outlet tubing onto the larger barbs on the proportioner.**

DEMA DUAL SINK DISPENSER

MODEL: 652GAP & 652GAP-2M

INSTALLATION INSTRUCTIONS

Caution: To prevent continuous siphoning, the outlet of the discharge tubing should not be below the level of chemical in the container.

Outlet tubes may be tie-wrapped to each other or anchored to the wall or faucet to prevent damage to proportioners. (Tie-wraps not included.)

D. Injection Adjustment:

WARNING: USE CARE WHEN HANDLING HAZARDOUS CHEMICALS.

Chemical feed rates are controlled by metering tips screwed into the proportioner barb. Use Table 1 as a guide for tip selection.

1 cps (centipoise) is equal to the viscosity of water
75 cps is approximately equal to the viscosity of 10 weight motor oil
200 cps is approximately equal to the viscosity of most dishwashing detergents

TABLE 1
4 GPM FLOW RATE PROPORTIONER, 1/4" I.D. Tubing

Metering Tip Color	Injection Rates For Viscosities Shown					
	1 cps		75 cps		200 cps	
	Oz/Gal	Ratio	Oz/Gal	Ratio	Oz/Gal	Ratio
Tan	0.33	387-1	0.26	500-1	0.12	1090-1
Orange	0.42	307-1	0.32	430-1	0.17	735-1
Turquoise	0.51	251-1	0.34	382-1	0.19	676-1
Pink	0.78	165-1	0.56	230-1	0.3	422-1
Clear	0.87	147-1	0.67	192-1	0.33	391-1
Brown	0.99	129-1	0.74	174-1	0.37	345-1
Red	1.37	93-1	0.91	141-1	0.44	289-1
White	1.52	84-1	1.04	123-1	0.48	264-1
Green	1.72	74-1	1.22	105-1	0.52	244-1
Blue	2.13	60-1	1.27	101-1	0.54	239-1
Yellow	3.05	42-1	1.71	75-1	0.56	229-1
Black	4.50	28-1	1.96	65-1	0.57	224-1
Purple	7.75	17-1	2.4	53-1	0.59	217-1
Gray	9.86	13-1	2.54	50-1	0.63	204-1
No Tip	19.63	7-1	3.16	40-1	0.67	190-1

3. OPERATION:

The model 652GAP is activated by turning one of the two on-off ball valves fully counter-clockwise. **(In order for the unit to operate properly, only one ball valve should be open.)** When the desired amount of chemical water solution has been obtained turn the ball valve fully clockwise.

Note: Do not use ball valves to throttle chemical water flow rate; this will result in inconsistent induction rates.

4. SERVICING:

CAUTION: TURN OFF WATER SUPPLY BEFORE SERVICING.

A. Proportioner fails to draw chemical:

1. Proportioner outlet tubing cut too short for priming. Pinch outlet tube to create back pressure which will cause unit to prime. The foot valve will keep the inlet tube primed thereafter.
2. Insufficient water supply pressure. 20 psi is the minimum allowable pressure.

DEMA DUAL SINK DISPENSER

MODEL: 652GAP & 652GAP-2M

INSTALLATION INSTRUCTIONS

B. Proportioner stops drawing chemical:

1. Inspect foot valve for dried chemical or dirt. Soak in hot water to clean.
2. Proportioner inlet clogged with dried chemical. Remove metering tip and try injecting in hot water. If there is no suction, remove proportioner and soak in hot water to clear interior passages.

RETURNS:

NO MERCHANDISE MAY BE RETURNED FOR CREDIT WITHOUT DEMA'S WRITTEN PERMISSION. RETURN MERCHANDISE AUTHORIZATION NUMBER REQUIRED IN ADVANCE OF RETURN.

WARRANTY:

DEMA products are warranted against defective material and workmanship under normal use and service for one year from the date of manufacture. This limited warranty does not apply to any products which have a normal life shorter than one year or failure and damage caused by chemicals, corrosion, improper voltage supply, physical abuse, or misapplication. Rubber and synthetic rubber parts such as "o"-rings, diaphragms, squeeze tubing and gaskets are considered expendable and are not covered under warranty. This warranty is extended only to the original buyer of DEMA products. If products are altered or repaired without prior approval of DEMA, this warranty will be void.

Defective units or parts should be returned to the factory with transportation prepaid. If inspection shows them to be defective, they will be repaired or replaced without charge, F.O.B. factory. DEMA assumes no liability for damages. Return merchandise authorization number, to return units for repair or replacement, must be granted in advance of return.

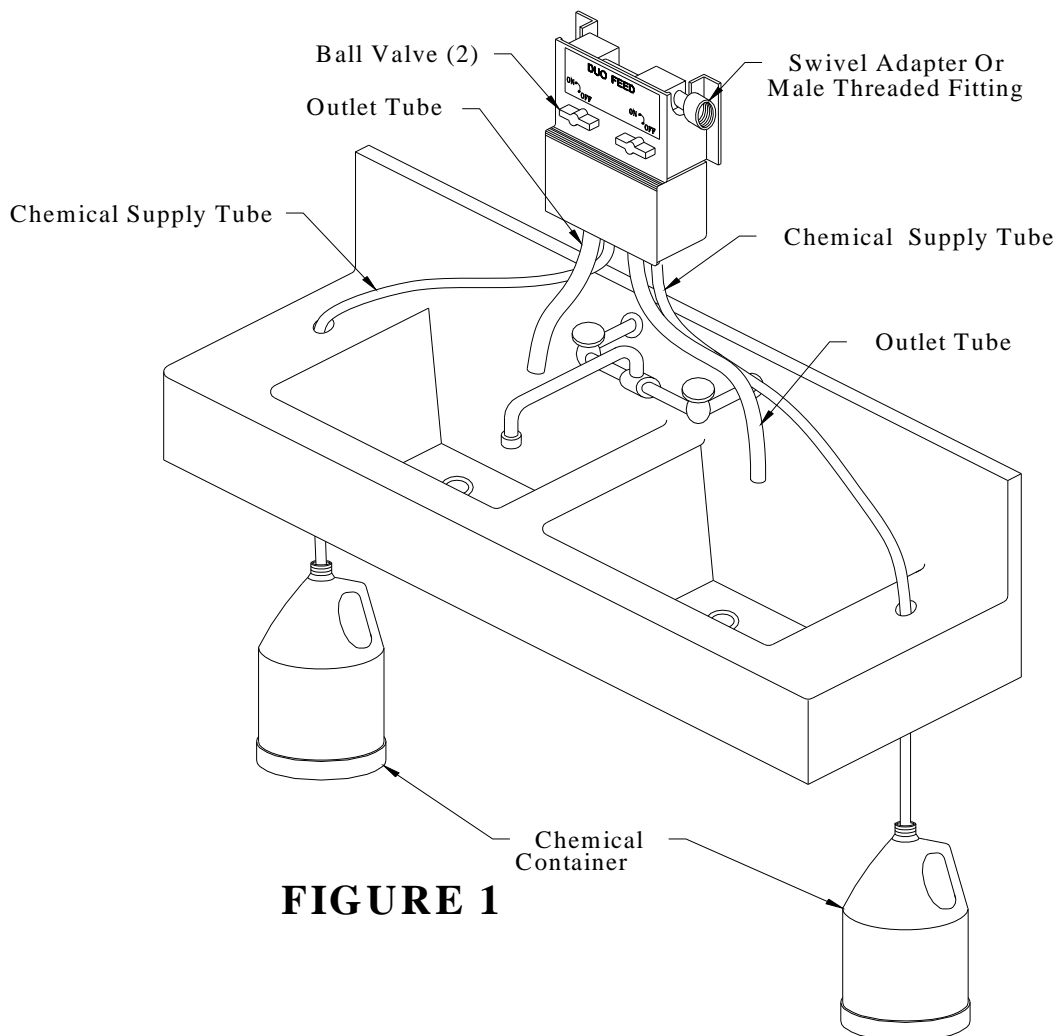


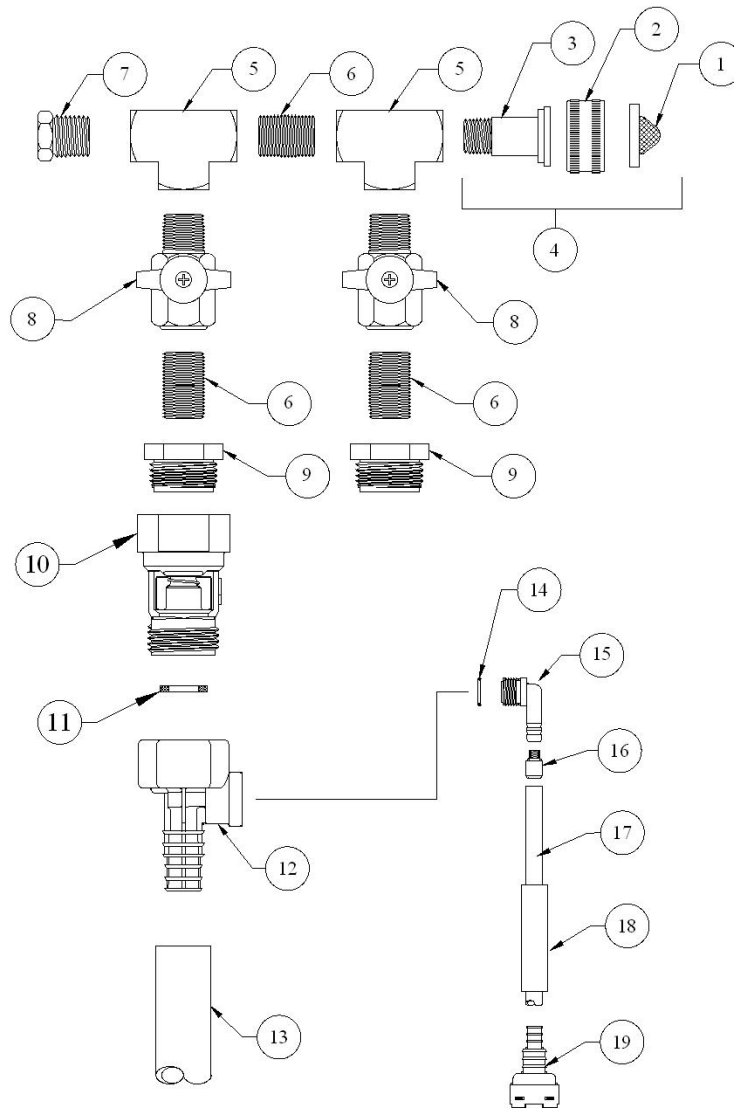
FIGURE 1

DEMA DUAL SINK DISPENSER

MODEL: 652GAP & 652GAP-2M

INSTALLATION INSTRUCTIONS

MODEL: 652GAP



NO.	PART NO.	DESCRIPTION
1	100-38	Strainer Washer
2	65-10	Hose Coupling
3	65-17-2	Hose Adapter Stem
4	65-11	Swivel Adapter Kit
5	65-30-1	1/4" NPT Pipe Tee
6	25-137-6U	1/4" NPT Close Nipple
7	65-6	Plug – 1/4" NPT
8	65-7	1/4" NPT Ball Valve
9	61-31-3U	Adapter MGHT X 1/4" FPT
10	16-30	Action Gap Assembly
NO.	PART NO.	DESCRIPTION

11	150-6	Rubber Washer
12	61-22-3	4 GPM Proportioner – 1/4" Inlet Barb
13	61-21	1/2" ID X 6' Lg. Vinyl Tubing
14	63-78	O-Ring
15	63-79	Inlet Barb (1/4" Barb)
16	100-15K	Metering Tip Kit-14 Sizes (1/4" Barb)
17	100-12	1/4" ID X 8' Lg. Vinyl Tubing
18	61-107-2	Ceramic Weight
19*	100-16E	Foot Valve
20**	L806	Chemical labels
21**	L842	DEMA Unit label

*Foot Valve also available with silicone (100-16S-1) or Viton (100-16V-1) rubber seals. Please specify material when ordering.

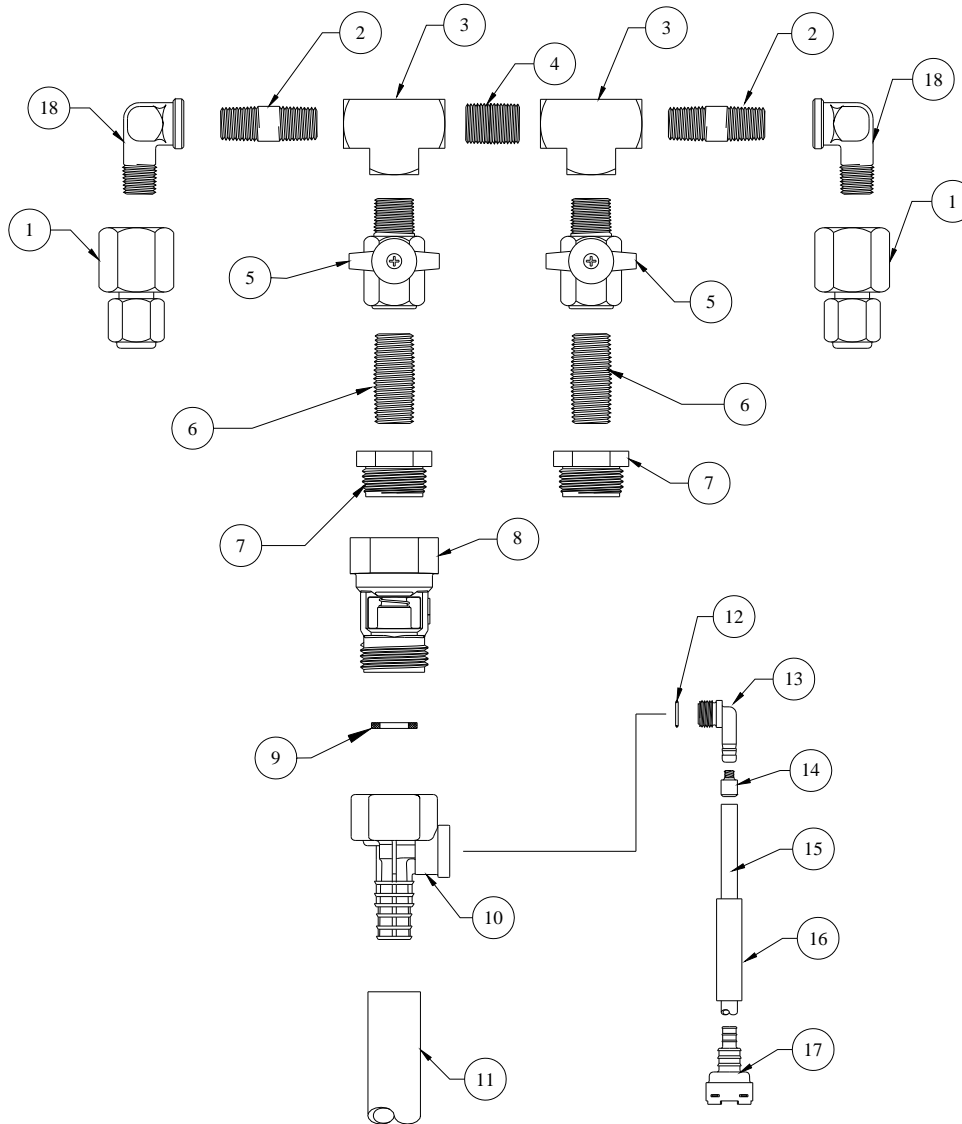
** Items not shown.

DEMA DUAL SINK DISPENSER

MODEL: 652GAP & 652GAP-2M

INSTALLATION INSTRUCTIONS

MODEL: 652GAP-2M



NO.	PART NO.	DESCRIPTION
1	25-51-12	1/4" NPT X 3/8" O.D. Tube Compression Fitting
2	25-137-12	1/4" NPT X 1-1/2" Lg. Close Nipple
3	65-30-1	1/4" NPT Pipe Tee
4	65-20-1	1/4" NPT Spacer Pipe Plug (solid)
5	65-7	1/4" NPT Ball Valve
6	25-137-6U	1/4" NPT X 7/8" Lg. Close Nipple
7	65-31-3U	1/4" NPT X 3/4" MGHT Bushing
8	16-30	Action GAP Assembly
9	150-6	Rubber Washer
NO.	PART NO.	DESCRIPTION

10	61-22-3	4 GPM Proportioner – 1/4" Inlet Barb
11	61-21	1/2" ID X 6' Lg. Vinyl Tubing
12	63-78	O-Ring
13	63-79	Inlet Barb (1/4" Barb)
14	100-15K	Metering Tip Kit – 14 Sizes (1/4" Barb)
15	100-12	1/4" ID X 8' Lg. Vinyl Tubing
16	61-107-2	Ceramic Weight (1/4" Tube)
17*	100-16E	Foot Valve
18	61-121	Elbow, 1/4" St. Plated
20**	L806	Chemical Labels
21**	L842	DEMA Unit Label

*Foot Valve also available with silicone (100-16S) or Viton (100-16V) rubber seals. Please specify material when ordering.

** Items not shown.