



# DEMA SPRAY FOAM MODEL 294C INSTALLATION INSTRUCTIONS

®

## 1. PARTS

- A. Foamer assembly.
- B. Plastic supply tubing w/strainer.
- C. Outlet hose 3/4" ID x 25'long (optional)
- D. Shutoff valve (optional)
- E. Drum protector disc.

## 2. INSTALLATION

This product is designed only to be used as described in this instruction sheet. Adhere to all warnings and cautions identified in this document.



**WARNING:** Installations must conform to all local and national plumbing codes and use approved backflow prevention and pressure relief devices where required.

**ALWAYS DISCONNECT DISPENSER FROM WATER SOURCE WHEN DISPENSER IS NOT IN USE.**



Always read SDS for all chemicals used and follow personal protective guidelines.

- A. Water inlet is 3/4" garden hose swivel. It may be removed if attaching to 1/2" pipe.
- B. Air inlet is 1/4" NPT.
- C. Foam outlet is 3/4" garden hose. Connect shutoff valve to end of hose. See Table 1 for hose limitations.
- D. Detergent may be drawn directly from any size container which usually is set on the floor. Use the plastic tubing for connecting to the injector barb, first cutting to desired length and dropping the end with the strainer into the container. The drum protector disc may be twisted at the slit to attach to the tubing at the bung opening.

**WARNING: Use care when handling hazardous chemicals.**

### TABLE 1

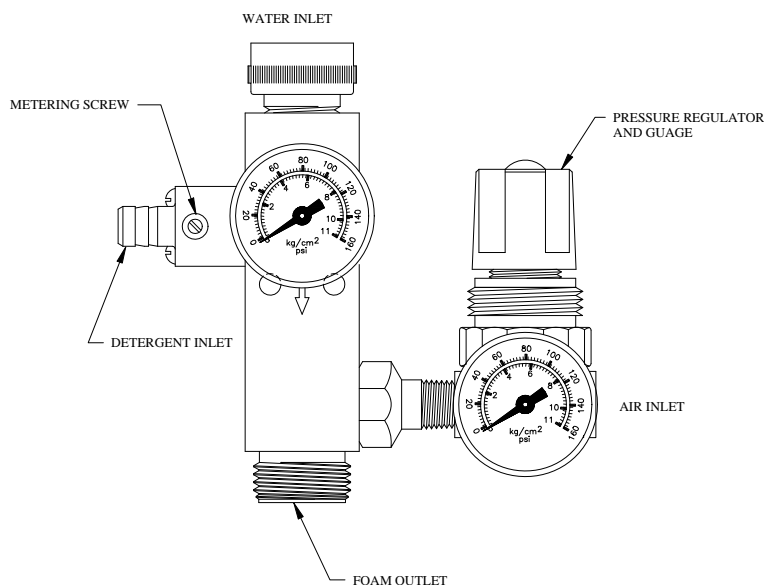
HOSE SIZE & LENGTH	MIN. PRESSURES	
	WATER	AIR
25' OF 3/4" ID	40 PSI	40 PSI
50' OF 3/4" ID	50 PSI	40 PSI
25' OF 1/2" ID	60 PSI	40 PSI

### TABLE 2

VISCOSITY CPS	1	75	220	500
MAX. OZ/GAL.	27	13	10	9

### TABLE 3

PRESSURE PSI	40	50	60	80
WATER FLOW GPM	1.4	1.6	1.7	2.0
AIR FLOW SCFM	3.5	4.2	4.8	6.1



# DEMA SPRAY FOAM MODEL 294C

## INSTALLATION INSTRUCTIONS

### 3. OPERATION

Open shutoff valve at end of hose. Turn on air supply; set pressure at 40 PSI. Turn on water supply.

### 4. ADJUSTMENT

Adjust detergent feed rate by turning recessed screw in square knob to the left, which will increase the rate to the maximum shown in Table 2. To increase dryness of foam, raise air pressure 5 PSI. Repeat is necessary. See Table 3 for water and air flows.

### 5. SERVICING

**CAUTION: Turn off air and water supplies before servicing.**

If flow surges and unit fails to make foam:

- A. Is the metering screw backed off?
- B. Is the outlet hose too small or too long?
- C. Is there sufficient water and air pressure? At least 30 PSI is required.
- D. Does the detergent contain a foaming agent?
- E. Is the foamer outlet attached to a manifold with too few or too small nozzles? They should have a combined water rating of 20 GPM @ 40 PSI.

If unit stops operating:

- A. Is the foot strainer clogged? Lift from drum and clean.
- B. Is the detergent check valve clogged? Remove the 4 screws in the square knob. Remove knob to inspect and clean check valve ball, spring and o-ring.

**CAUTION: When servicing be sure that replacement parts have been installed according to drawing. Be certain to check valve parts are in place.**

### RETURNS:

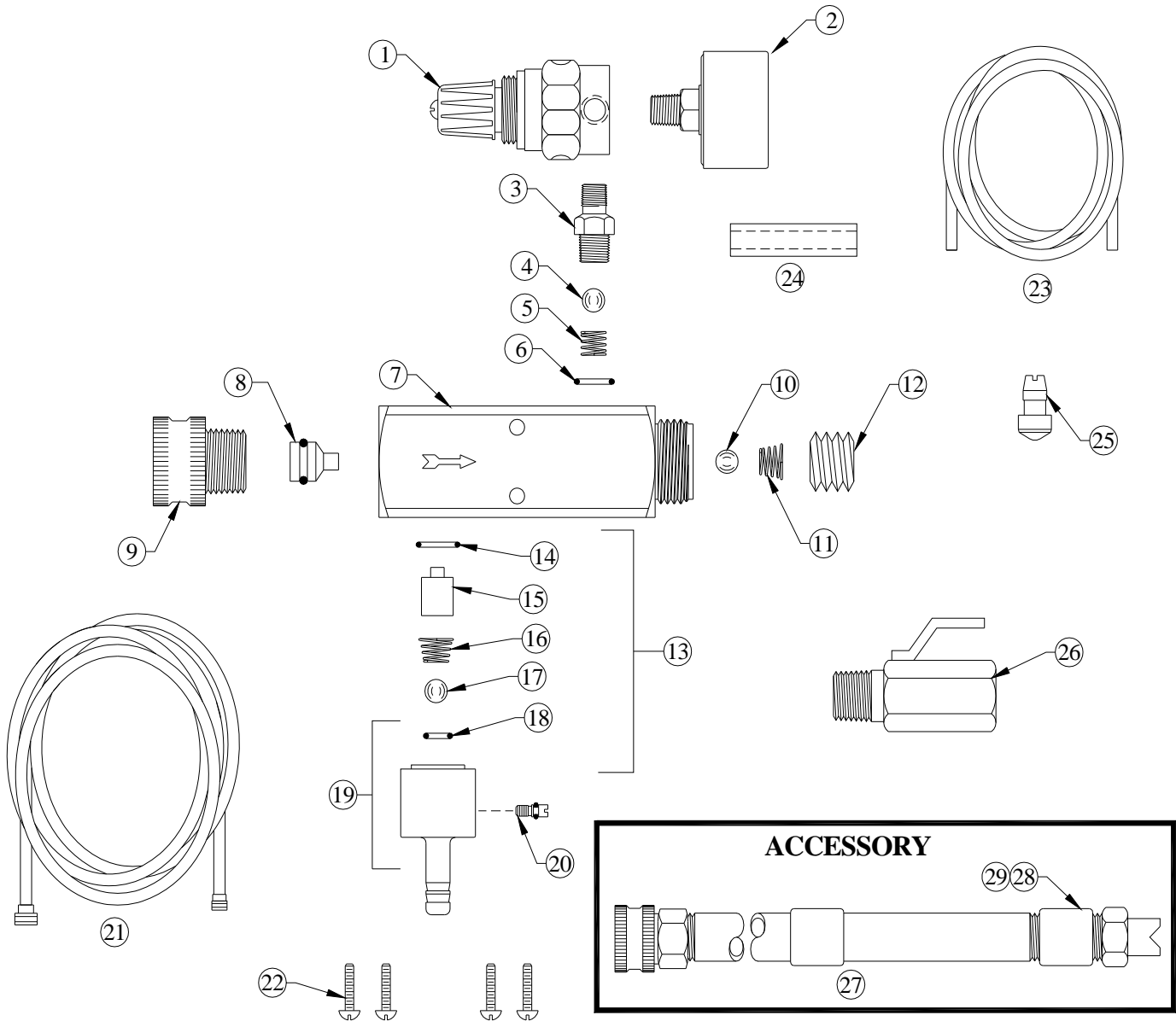
**NO MERCHANDISE MAY BE RETURNED FOR CREDIT WITHOUT DEMA'S WRITTEN PERMISSION. RETURN MERCHANDISE AUTHORIZATION NUMBER REQUIRED IN ADVANCE OF RETURN.**

### WARRANTY:

DEMA products are warranted against defective material and workmanship under normal use and service for one year from the date of manufacture. This limited warranty does not apply to any products which have a normal life shorter than one year or failure and damage caused by chemicals, corrosion, improper voltage supply, physical abuse, or misapplication. Rubber and synthetic rubber parts such as "o"-rings, diaphragms, squeeze tubing and gaskets are considered expendable and are not covered under warranty. This warranty is extended only to the original buyer of DEMA products. If products are altered or repaired without prior approval of DEMA, this warranty will be void.

Defective units or parts should be returned to the factory with transportation prepaid. If inspection shows them to be defective, they will be repaired or replaced without charge, F.O.B. factory. DEMA assumes no liability for damages. Return merchandise authorization number, to return units for repair or replacement, must be granted in advance of return.

# DEMA SPRAY FOAM MODEL 294C INSTALLATION INSTRUCTIONS



# DEMA SPRAY FOAM MODEL 294C INSTALLATION INSTRUCTIONS

NO	MODEL NUMBER						PART NUMBER	DESCRIPTION
	294 C	294CS	294C-1	294C-SJ	294C-SJ-2	294C-SJ-3		
1	I	I	I	I	X	X	93-1	PRESSURE REGULATOR
2	I	I	I	I	X	X	93-2	PRESSURE GAUGE
3	I	I	I	I	I	I	93-31	ADAPTER
4	I	I	I	I	I	X	93-30-1V	BALL, 1/4" DIA.
	X	X	X	X	X	I	24-24S	
5	I	I	I	I	I	I	93-6	AIR CHECK VALVE SPRING
6	I	I	I	I	I	I	21-8	AIR CHECK VALVE O-RING
7	I	I	I	I	I	I	93-32	FOAMER BODY
8	I	I	I	I	I	I	24-8-8S	WATER NOZZLE W/ O-RING
9	I	I	I	I	I	I	34-1	INLET HOSE ADAPTER
10	I	I	I	I	I	X	93-30-2	BALL 5/16" DIA.
	X	X	X	X	X	I	30-2	
11	I	I	I	I	I	I	93-29	SPRING
12	I	I	I	I	I	I	93-28	RETAINER SCREW
13	I	I	I	X	X	X	24-63	CHECK VALVE REPAIR KIT
	X	X	X	I	I	I	24-62	
14	I	I	I	I	I	I	25-29	METERING KNOB O-RING
15	I	I	I	X	X	X	23-34-3	CHECK VALVE CORE
	X	X	X	I	I	I	24-34-7	
16	I	I	I	X	X	X	23-9	CHECK VALVE SPRING
	X	X	X	I	I	I	24-23	
17	I	I	I	X	X	X	23-10	CHECK VALVE BALL
	X	X	X	I	I	I	24-24P	
18	I	I	I	X	X	X	23-11	CHECK VALVE O-RING
	X	X	X	I	I	I	24-25	
19	I	X	I	X	X	X	23-32	METERING KNOB W/ METERING SCREW AND O-RING
	X	I	X	X	X	X	23-32S-2	
	X	X	X	I	I	I	24-32	
20	I	I	I	X	X	X	23-24	METERING SCREW W/ O-RING
	X	X	X	I	I	I	100-24	
21	X	X	I	X	X	X	93-14	3/4" I.D. X 25' LG. OUTLET HOSE
22	I	I	I	I	I	I	23-7	MACHINE SCREW (4 REQ'D)
23	I	I	I	X	X	X	100-12L	1/2" O.D. VINYL TUBING X 8' LG.
	X	X	X	I	I	I	100-12	
24	I	I	I	X	X	X	61-107	CERAMIC WEIGHT
	X	X	X	I	I	I	61-107-2	
25	I	I	I	X	X	X	24-11L	FOOT STRAINER
	X	X	X	I	I	I	24-11MP	
26	X	X	I	X	X	X	90-15	OUTLET SHUTOFF VALVE

I=INCLUDED

X=OMIT

ACCESSORIES		
NO.	PART NO.	DESCRIPTION
27	93-17-4	4' LG SPRAY WAND W/ SOLID STREAM NOZZLE
28	93-24	NOZZLE W/ SOLID STREAM (SUPPLIED)
29	93-25	NOZZLE W/ 40 DEG. ANGLE