

DEMA 154



FAUCET PROPORTIONER

INSTALLATION INSTRUCTIONS

I. PARTS:

- A. Proportioner Assembly with GHT Faucet Adapter
- B. Vinyl tubing, foot valve & ceramic weight.

II. INSTALLATION:

This product is designed only to be used as described in this instruction sheet. Adhere to all warnings and cautions identified in this document.	
	WARNING: Installations must conform to all local and national plumbing codes and use approved backflow prevention and pressure relief devices where required. ALWAYS DISCONNECT DISPENSER FROM WATER SOURCE WHEN DISPENSER IS NOT IN USE.
	Always read SDS for all chemicals used and follow personal protective guidelines.

Screw proportioner directly onto garden hose type faucets. Remove inlet adapter for mounting onto standard external aerator threads. For other faucets see reverse side for adapter part numbers. See Figure 1 for supply tubing attachment. Cut vinyl tubing to any convenient length, slip on the ceramic weight, and push the open end over the detergent inlet barb. Soften end of tubing in hot water to facilitate attachment.

III. OPERATION:

Turn on water and press blue button to draw in chemical. When the water is turned off, the proportioner will reset to dispense clear water.

IV. CHEMICAL PROPORTIONING ADJUSTMENT:

WARNING: USE CARE WHEN HANDLING HAZARDOUS CHEMICALS

The proportion of chemical to water can be adjusted by turning the recessed screw in the proportioner body beneath the chemical inlet barb. Injection rates for various settings and for products of different viscosities are as follows:

DEMA 154

FAUCET PROPORTIONER

INSTALLATION INSTRUCTIONS

Note: 1 cps (centipoise) is equivalent to the viscosity of water, 75 cps is approximately equal to the viscosity of 10 weight motor oil, and 200 cps is approximately equal to most dishwashing detergents.

Turns Counter-Clockwise from Closed Position	Fluid Ounces Per Gallon of Water		
	Light 1 cps	Medium 75 cps	Heavy 200 cps
1/2	1	0.1	--
1	3	0.5	0.2
1 1/2	5	2.0	0.5
2	8	3.5	0.7
4	12	5.0	1.0

Note: The maximum injection rates of viscous materials can be increased by using oversized tubing Dema part number 100-12L.

V. SERVICING:

CAUTION: Turn off water supply before servicing.

A. Failure to inject chemical?

1. Low water pressure. At least 15 psi is required.
2. Dirt or chemical on outlet screens; clean.
3. Blue button does not seal when pushed. Remove and inspect for dirt or damage.
4. Chemical passage blocked. Back off adjusting screw. Remove proportioner and soak in hot water to clean internal passages.
5. Foot valve clogged. Soak in hot water.
6. Lime deposits in water passages. Remove proportioner and soak in deliming solution.
7. Conical inlet screen 150-34 is dirty or missing. Clean or replace.

B. Injects continuously?

1. Button fails to reset because of damage to button, retainer or spring.
2. Vacuum breaking air vents in button retainer are clogged with grease or dirt. Clean.
3. Chemical container above level of faucet. Place container on floor.

CAUTION: When servicing unit be sure that replacement parts have been installed according to drawing.

DEMA 154
FAUCET PROPORTIONER
INSTALLATION INSTRUCTIONS

RETURNS: **NO MERCHANDISE MAY BE RETURNED FOR CREDIT WITHOUT DEMA'S WRITTEN PERMISSION. RETURN MERCHANDISE AUTHORIZATION NUMBER REQUIRED IN ADVANCE OF RETURN.**

WARRANTY: DEMA products are warranted against defective material and workmanship under normal use and service for one year from the date of manufacture. This limited warranty does not apply to any products which have a normal life shorter than one year or failure and damage caused by chemicals, corrosion, improper voltage supply, physical abuse, or misapplication. Rubber and synthetic rubber parts such as "o"-rings, diaphragms, squeeze tubing and gaskets are considered expendable and are not covered under warranty. This warranty is extended only to the original buyer of DEMA products. If products are altered or repaired without prior approval of DEMA, this warranty will be void.

Defective units or parts should be returned to the factory with transportation prepaid. If inspection shows them to be defective, they will be repaired or replaced without charge, F.O.B. factory. DEMA assumes no liability for damages. Return merchandise authorization number, to return units for repair or replacement, must be granted in advance of return.

**DEMA 154
FAUCET PROPORTIONER
INSTALLATION INSTRUCTIONS**

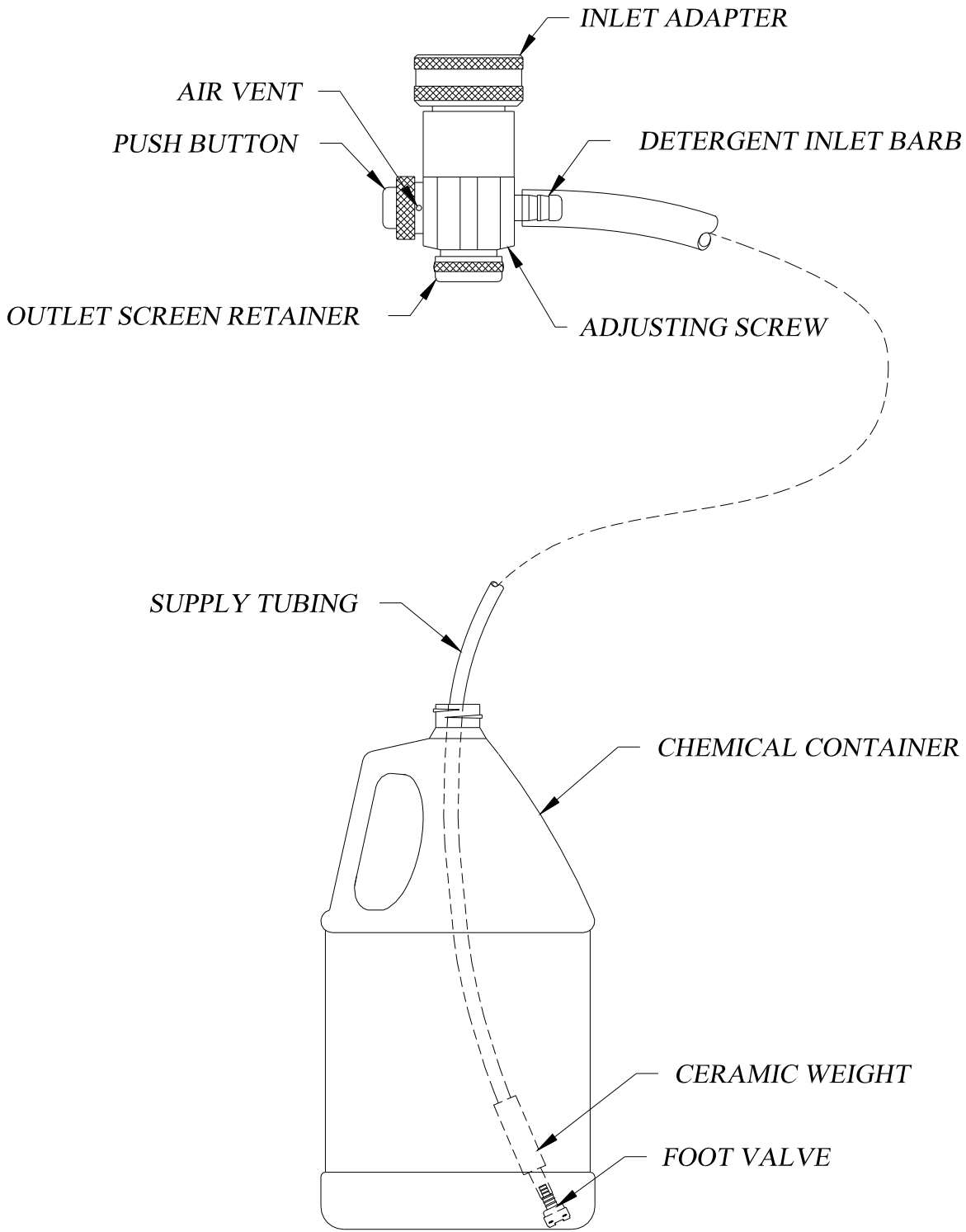
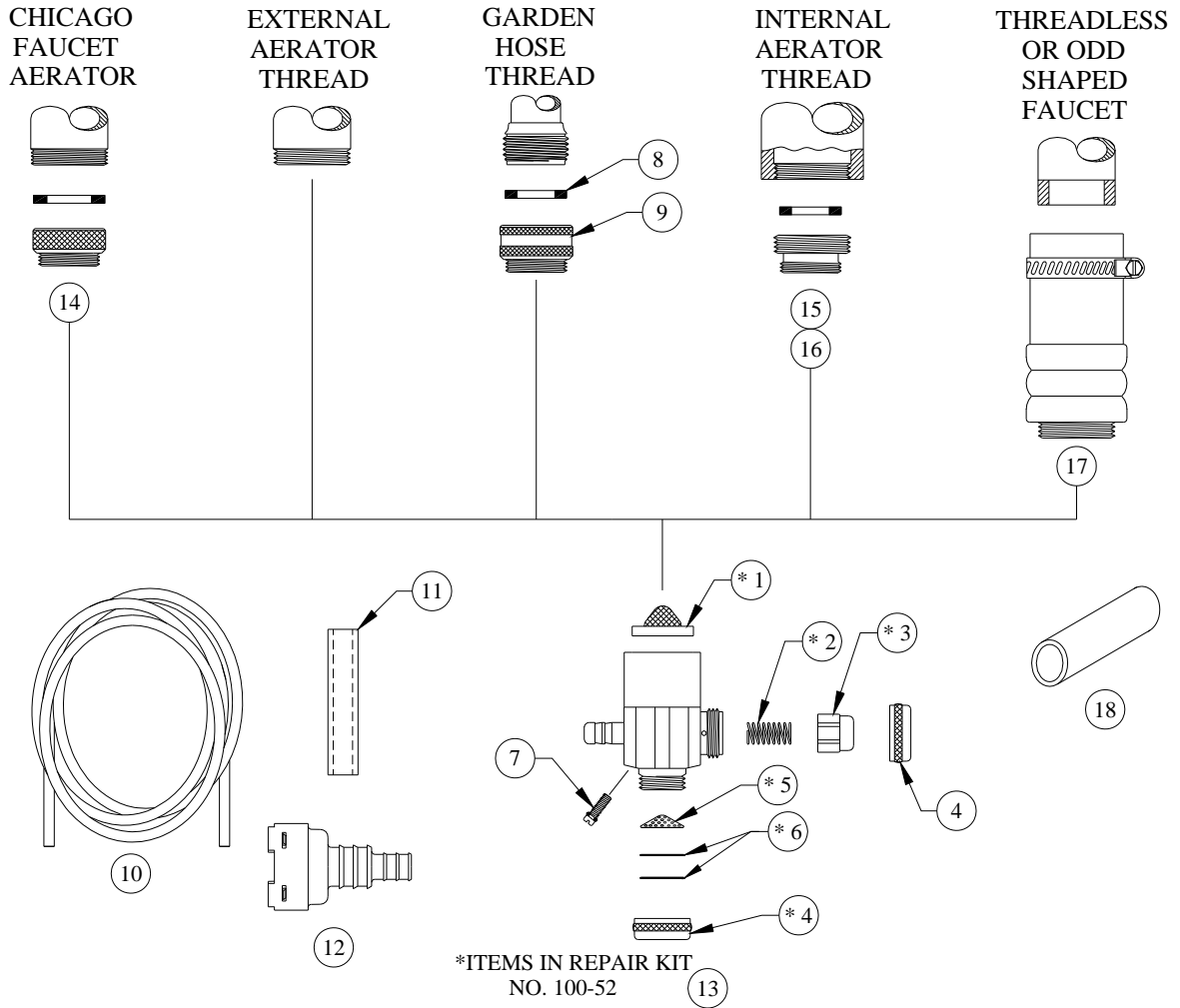


FIGURE 1

DEMA 154

FAUCET PROPORTIONER

INSTALLATION INSTRUCTIONS



NO.	PART NO.	DESCRIPTION
1 *	150-34	Inlet Screen Washer
2 *	100-29	Button Spring
3 *	100-26	Push Button
4 *	100-36	Button Retainer (1 in Repair Kit Only)
5 *	100-33	Outlet Screen (Conical)
6 *	100-19	Outlet Screen (Flat) (2 Req'd)
7 *	100-24	Metering Screw
8 *	150-6	Adapter Washer
9	150-10	Hose Thread Adapter w/Washer
10	100-12	7/32" ID x 3/8" OD x 8' Lg. Supply Tubing

NO.	PART NO.	DESCRIPTION
11	61-107-2	Ceramic Weight
12	100-16E-1	Foot Valve
13	100-52	Repair Kit

ACCESSORIES

NO.	PART NO.	DESCRIPTION
14	150-23	Outside Chicago Thread Adapter
15	150-21	Inside Aerator Thread Adapter
16	150-32	Inside Kohler Thread Adapter
17	150-9-2	Irregular Faucet Adapter
18	100-14M	Coupling For 1/4" ID x 8' Lg. Tubing